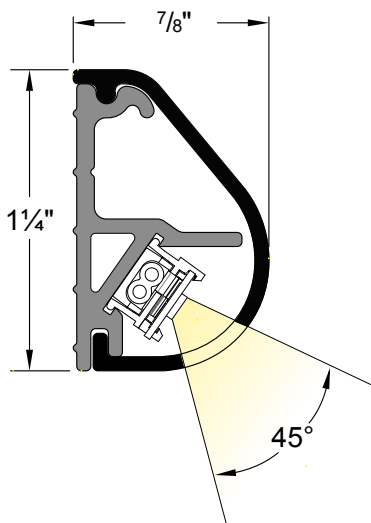


Profile Dimensions



Please verify the contents of the packages!

Please read instructions entirely before starting installation

Be sure power is turned off before installing or modifying the system

Call Tivoli, LLC tech support with questions

Caution: Usher™ Seat Light is designed to work with listed Class 2 12V DC transformers only. Use of any other power source will cause damage, shorten the life of the fixture and will void the warranty.

Consult any and all applicable local and national codes for installation.

Do not conceal or extend exposed conductors through a building wall as per local electrical code.

Warning: With any luminaire for any application, basic safety precautions should always be followed to reduce the risk of fire, electric shock and personal injuries. This lighting system should be installed by a certified professional

Installation Instructions

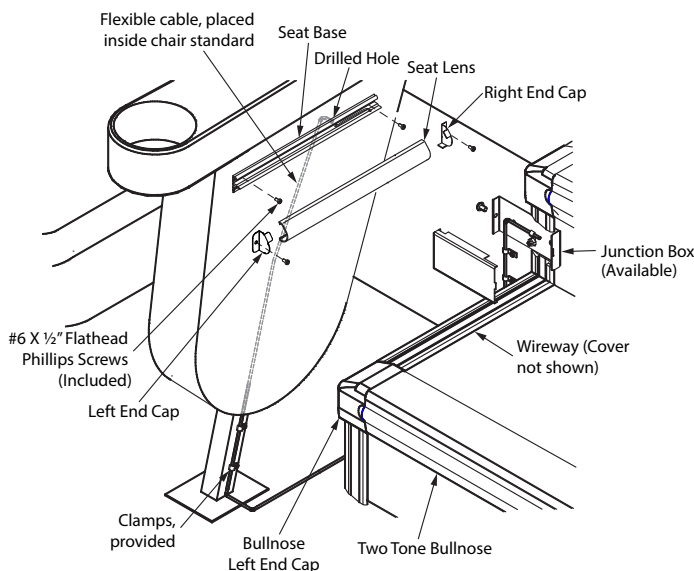


Installation with Junction Box in Riser

Step 1: Measure the height, 15 inches to 18 inches from floor, for the location of (2) holes to be drilled. See included template. (page 4)

Step 2: Remove lens. Center the 9" Usher™ fixture about chair standard.

Step 3: Drill a 5/16" diameter hole through frame of chair standard suitable to feed flexible cable.



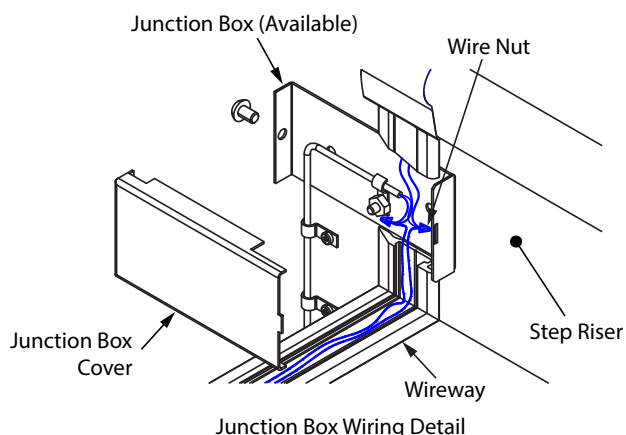
Step 4 : Feed flexible cable through hole, as shown, to inside of seat frame and secure at bottom of frame, with clamps, provided.

Step 5: Secure Usher™ Seat Light with (2) #6 x 1/2" phillips flat-head screws (included). Then snap in lens cover and install left and right End Caps with suitable screws (by others).

Step 6 : The junction box (available separately) must align with the wireway and be mounted on the step riser so that the cutout of the junction box lines up with the wireway, see detail. (Mounting screws by others.)

Step 7: Feed the wires along wireway and junction box and make wire connections using wire nuts.

Note: The ribbed wire is negative (-) and the smooth wire is positive (+).



For Installation With Junction Box On Floor

Step 1: Measure the height, 15 inches to 18 inches from floor, for the location of (2) holes to be drilled. See included template. (page 4)

Step 2: Remove lens. Center the 9" Usher™ fixture on the chair standard.

Step 3: Drill a $\frac{5}{16}$ " diameter hole through frame of chair standard suitable to feed flexible cable.

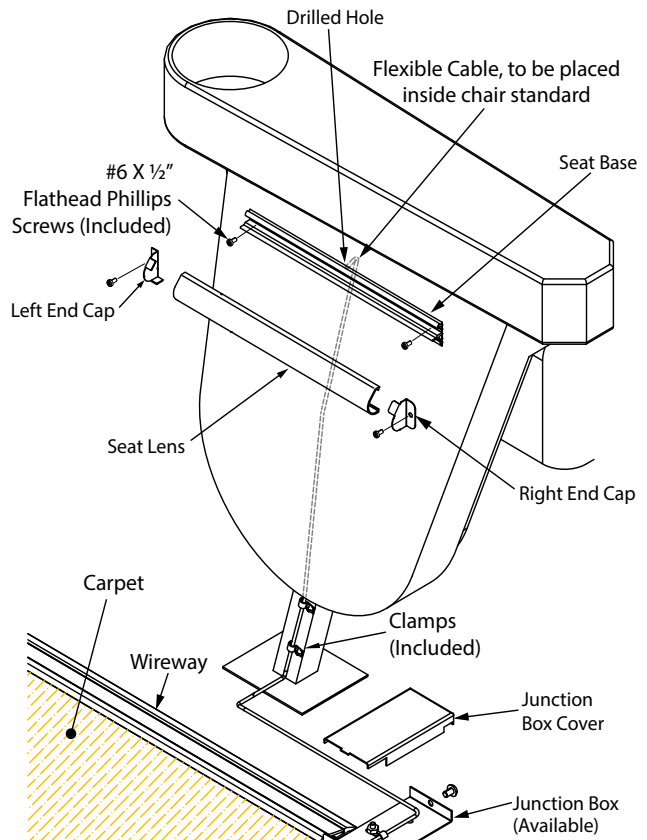
Step 4: Feed flexible cable through hole, as shown, to inside of seat frame and secure at bottom of frame, with clamps, provided.

Step 5: Secure Usher™ Seat Light with (2) #6 x $\frac{1}{2}$ " phillips flat-head screws (included). Then snap in lens cover and install left and right End Caps with suitable screws (by others).

Step 6: The junction box (available separately) must align with the wireway and be mounted on the bare finished floor, so that the cutout of the junction box lines up with the wireway, see detail. (Mounting screws by others.)

Step 7: Feed the wires along wireway and junction box and make wire connections using wire nuts.

Note: The ribbed wire is negative (-) and the smooth wire is positive (+).



For Installation With Junction Box Recessed In Floor

Step 1: The Junction box and flex conduit, by others (see section A-A Detail) should be placed, before concrete is poured.

Step 2: Measure the height, 15 inches to 18 inches from floor, for the location of (2) holes to be drilled. Please see included template. (page 4)

Step 3: Remove lens. Center the 9" Usher™ fixture on to chair standard.

Step 4: Drill a $\frac{5}{16}$ " diameter hole through frame of chair standard suitable to feed flexible cable.

Step 5: Feed flexible cable through hole, as shown, to inside of seat frame and secure at bottom of frame, with clamps (included).

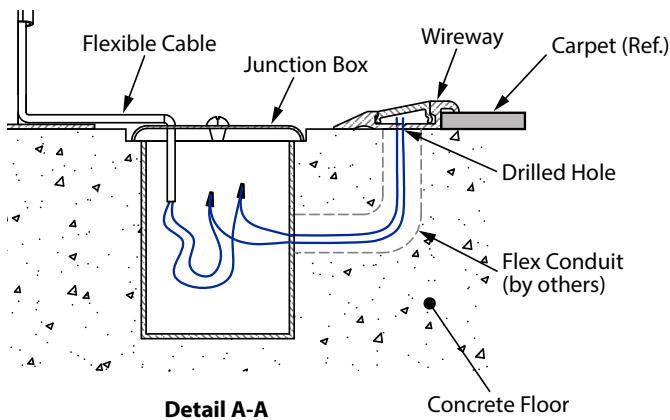
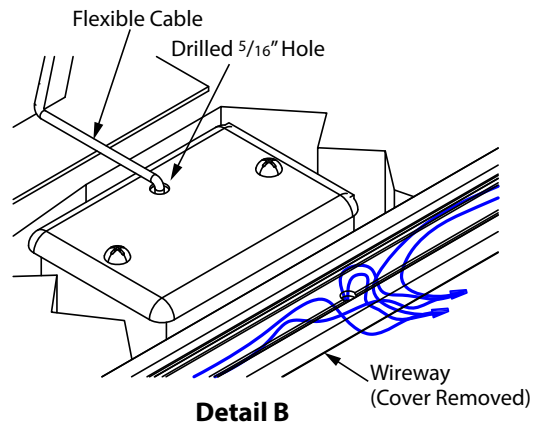
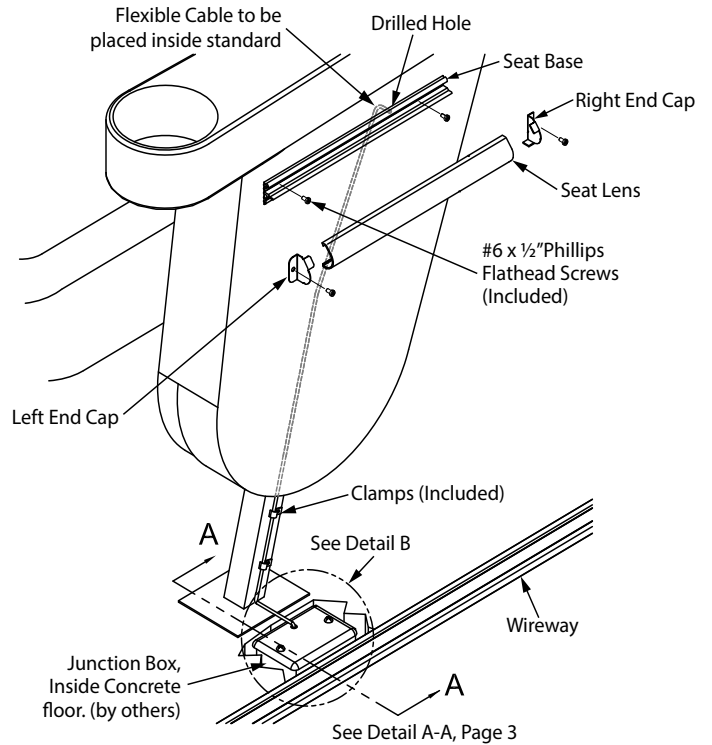
Step 6: Secure Usher Seat Light with (2) #6 x $\frac{1}{2}$ " phillips flathead sheet metal screws (included). Then snap in lens cover and install left and right End Caps with suitable screws (by others).

Step 7: Drill a $\frac{5}{16}$ " diameter hole into the junction box lid. Feed flexible cable through hole.

Step 8: Drill a $\frac{5}{16}$ " diameter hole into wireway extrusion. Be sure hole is aligned with flex conduit (Step 1).

Step 9: Feed the wires along wireway and through hole and flex conduit to the junction box and make wire connections using wire nuts.

Note: The ribbed wire is negative (-) and the smooth wire is positive (+).



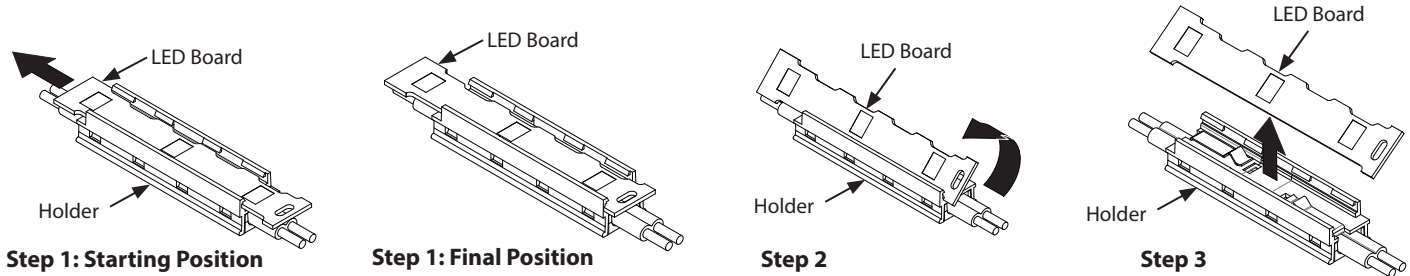
Removing and Installing the LED Board

Step 1: Slide board to the left as far as it will go. Insert a pointed object, such as a pen tip, into the slot at the end of the LED board to slide it more easily.

Step 2: Rotate top edge of board upward, as shown.

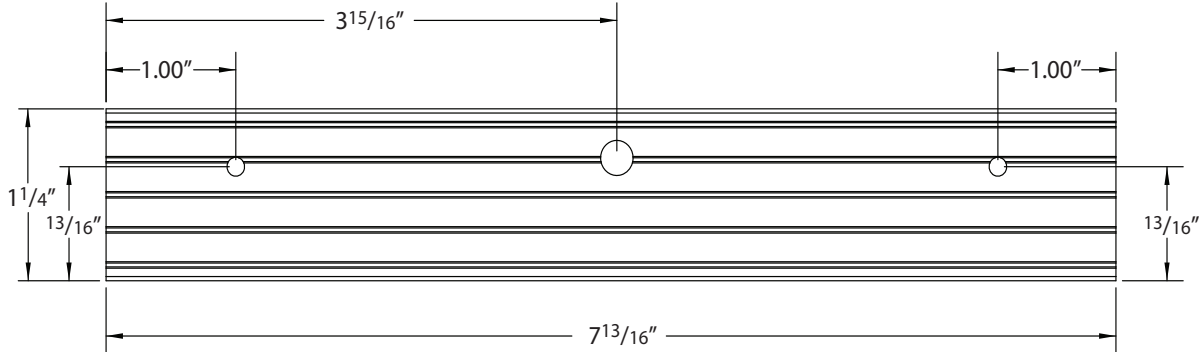
Step 3: Remove board.

Installation: Reverse steps to install.



Templates For Hole Locations

Template Without End Caps



Overall Length with End Caps

