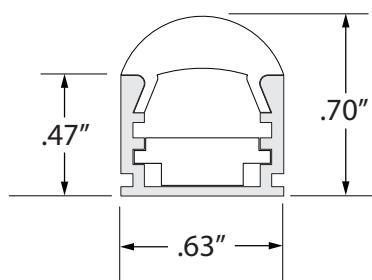


# Regulor Channel Installation Instructions



Regulor Channel  
(Shown with Lens and Insert)

## Please verify the contents of the packages!

**Please read instructions entirely before starting installation.**  
**Be sure power is turned off before installing or modifying the system.**

**Call Tivoli, LLC tech support with questions.**

**Caution:** Regulor Channel is designed to work with 24V AC Tivotape™ only. Use Class 2 24V DC transformers only. Use of any other power source will cause damage, shorten the life of the fixture and void the warranty.

**Consult** any and all applicable local and national codes for installation.

**Do not** conceal or extend exposed conductors through a building wall as per local electrical code.

**Warning:** With any luminaire for any application, basic safety precautions should always be followed to reduce the risk of fire, electric shock and personal injuries. This fixture should be installed by a certified professional.

## Installation instructions:

### Attach Channel

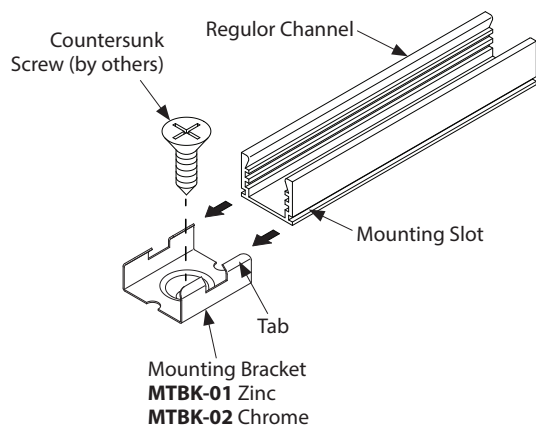
There are two options for attaching Regulor Channel to the mounting surface; mounting brackets or double-sided tape.

#### Option 1: Mounting Brackets

**Step 1:** Determine mounting location and place mounting brackets in a straight line to accommodate the length of the Regulor Channel.

**Step 2:** Attach mounting brackets using screws with countersunk heads (by others) appropriate for mounting surface, ie: wood screws for wood.

**Step 3:** Align mounting slot on Regulor Channel with tabs on mounting brackets and slide channel into position.



### Install Tivotape™

Various beam angles may be achieved depending on how the fixture is assembled. See the following options.

#### Option 1: 10° Beam Angle

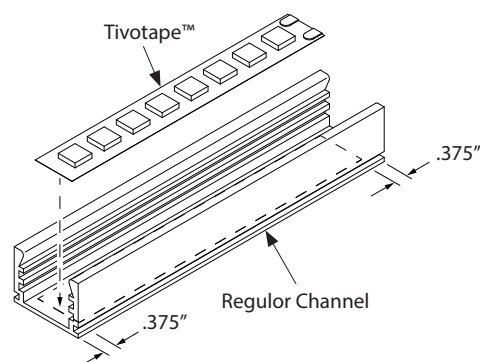
This option does not use the included insert. Make sure inside channel surface where Tivotape is to be applied is clean, free of all dirt, oil and debris.

**Note:** Cleaning channel mounting surface with alcohol is recommended.

**Step 1:** Cut Tivotape™ at recommended cut point, if necessary, to fit channel.

**Step 2:** Peel off backing tape and apply Tivotape™ directly to the inside surface of Regulor Channel.

**Note:** Be sure to position Tivotape™ at least .375" away from edge of channel if End Caps will be used.



#### Option 2: Double Sided Tape

**Step 1:** Determine mounting location.

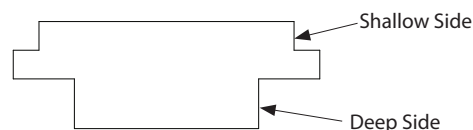
**Step 2:** Apply a length of double sided tape to the bottom of the Regulor Channel.

**Step 3:** Remove backing tape and press channel into position.

### Prepare Insert before proceeding with subsequent options

**Step 1:** Identify shallow side and deep side of Channel Insert.

**Step 2:** If End Caps will be used, be sure the Channel Insert measures 3/4" shorter than the length of the Regulor Channel. Trim as required.



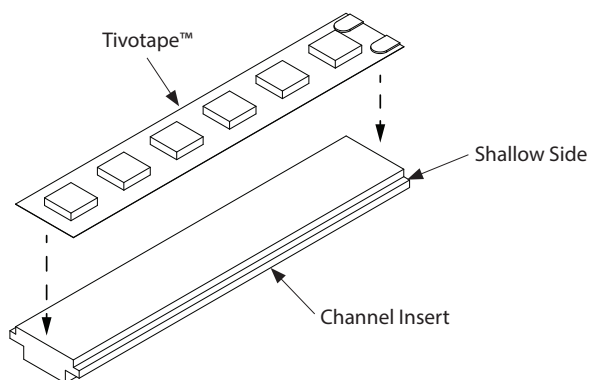
## Installation instructions (continued):

### Option 2: 30° and 60° Beam Angle

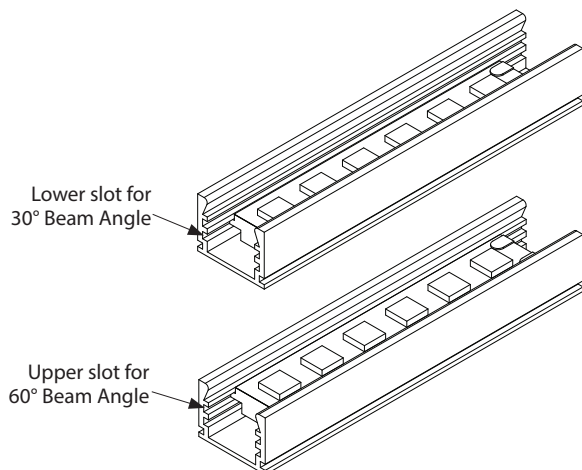
**Step 1:** Position the Channel Insert with the shallow side up.

**Step 2:** Make sure insert surface where Tivotape is to be applied is clean, free of all dirt, oil and debris.

**Step 3:** Peel backing tape from bottom side of Tivotape™ and attach to top surface of insert.



**Step 4:** Slide insert into channel as shown. Use lower slot in Channel to achieve a 30° beam angle and use the upper slot for a 60° beam angle.



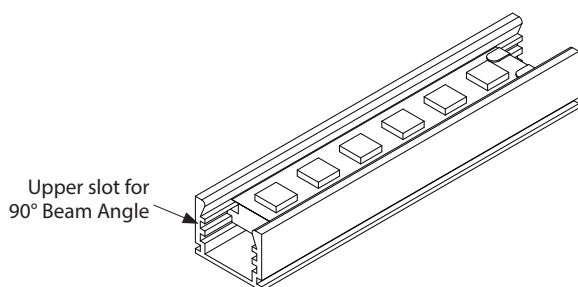
### Option 3: 90° Beam Angle

**Step 2:** Position the Channel Insert with the deep side up.

**Step 3:** Make sure surface of insert where Tivotape is to be applied is clean, free of all dirt, oil and debris.

**Step 4:** Peel backing tape from bottom side of Tivotape™ and attach to top surface of insert.

**Step 4:** Slide insert into upper slot of channel as shown.

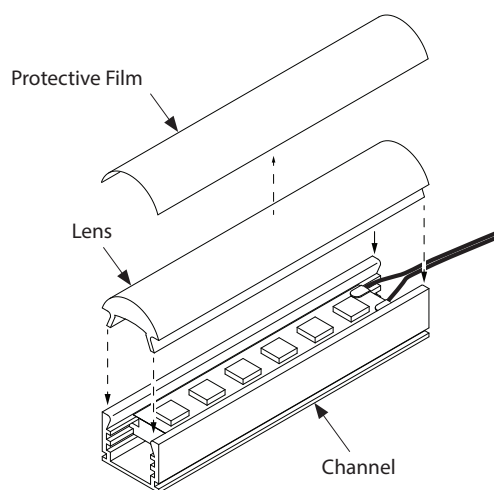


### Install Lens

**Step 1:** Position Lens over Channel.

**Step 2:** Press lens evenly into channel until it snaps into place.

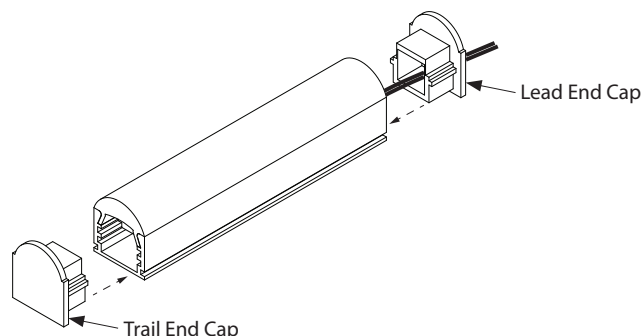
**Step 3:** Remove protective film.



### Install End Caps

**Step 1:** On lead end, insert wire through hole in End Cap and press End Cap into Channel, as shown.

**Step 2:** On trail end, select End Cap with no hole and insert into trail end of Channel.



### Complete Electrical Connections

Make necessary electrical connections to junction box and transformer (fixtures are DC powered and wires are marked for polarity). See Tivotape™ Installation Instructions for further details.