



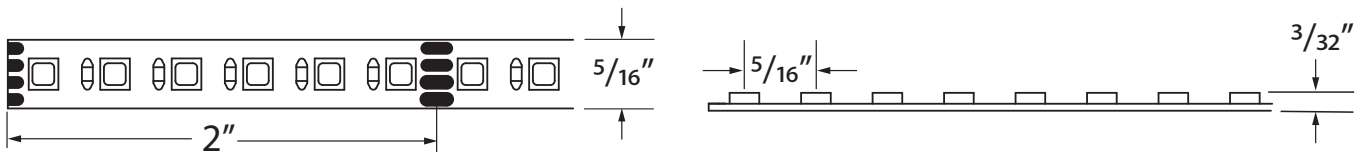
Project: \_\_\_\_\_ Length: \_\_\_\_\_

## Product Features

- Protected by Tivoli's exclusive eXo Shield for ultimate dust and moisture protection
- 3-in-1 RGB chip
- Multiple mounting options with Tivoli's Urban channel series.
- Tight SMD LED spacing (8mm overall width) provides smooth visual delivery
- Provided with factory applied 3M VHB adhesive tape on the back for quick application
- Dimmable with DMX protocol (see power supply page for options)
- DMX Controllable and compatible with Tivoli's own CUEpro software (sold separately)
- Low Voltage (24V DC)
- IP54 rated
- 5 year warranty



## Dimensions



## Ordering Information

PRODUCT CODE	LED TYPE	PROFILE	INSTALL	VOLTAGE
<b>TPL</b>	<b>RGB</b>	<b>M</b>	<b>I</b>	<b>24</b>
TPL = Tivotape	RGB = Red, Green, Blue	M = Mini	I = Indoor	24 = 24V DC



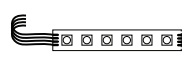
### TivoTape Run Lengths & End Preps

Please specify length of run, quantity of run(s) and end prep type at time of ordering.  
 Note: Only (1) end prep needed for each run.

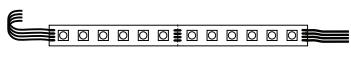
## Specifications

Electrical	
Input Voltage	24V DC
Dimming Option	DMX
Power Supply	Class 2
Wire Size (End Prep)	20 AWG, 4 wire
Power Consumption	4.4W/ft.
Color Temperature (CCT)	Red (620-625 nm), Green (527-532 nm), Blue (470-475 nm)
Lumen Output	136 (Total On)
Physical	
LED Package	3535
Cut Increments	2"
LEDs/ft.	36
Operating Temperature	-40°F (-40°C) to 140°F (60°C)
Maximum Run Length	22'
Copper Trace	3 oz.
Adhesive	3M VHB Tape
Dimension	5/16" (8mm)
Performance	
Lumen Maintenance (L70) Hours	60,000
Binning Tolerance	2 Step MacAdam Elipse
Warranty	5 Years
Certification and Testing	
Certification	UL Listed
Environment	IP54, Damp Location, Conformal Coated

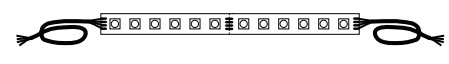
**Power Leads and Jumpers (Installed by Tivoli's certified solderers)**



**TPL-RGB-I-LEAD-C**  
LEAD/END  
24" standard 4 conductor 20AWG lead wire  
factory attached to one end of tape



**TPL-RGB-I-LEAD-D**  
LEAD/LEAD  
24" standard 4 conductor 20AWG lead wire  
factory attached to both ends of tape



**TPL-RGB-I-XEP**  
EXTRA LEAD WIRE  
Additional factory attached 20AWG lead wire  
to extend lengths of LEAD-C and LEAD-D up to  
20 ft. max  
Sold per foot (not shipped as spooled wire)

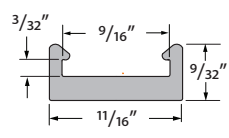
**Power Leads and Jumpers Accessories**



**TPL-I-CONN**  
18-22 AWG BUTT CONNECTORS  
Used to interconnect factory attached lead wires. Sold individually (4 ea required per connection).

**Mounting Channel**

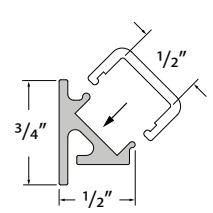
**M CHAN**



**MCHAN-8-LP**  
Low profile mounting channel,  
clear polycarbonate, length 8'.

**NOTE:** No Lens option

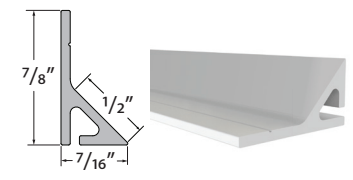
**M CHAN 45**



**TPL-I-45-MCH-8**  
45° Mounting channel, White  
PVC, 8' length, No lens



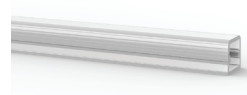
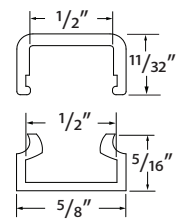
**INF-C-LNS-8**  
Lens, Clear, 8' length  
**INF-F-LNS-8**  
Lens, Frosted, 8' length



**TPL-I-45-MCH-8-S**  
45° Mounting channel, White PVC,  
8' length

**NOTE:** No Lens option

**INFINITY CHANNEL**



**INF-C-CHAN-8**  
Channel & Lens,  
Clear, 8' length

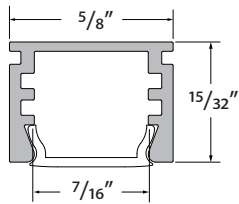
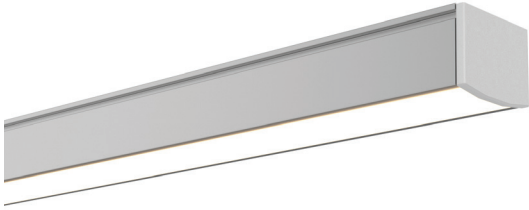


**INF-F-CHAN-8**  
Channel & Lens,  
Frosted, 8' length



**INF-EC**  
End Cap, Black

**MOSHER**



**MOSR-CHAN-SLV-6.5**  
Anodized Aluminum Extrusion,  
Available in 6.5' lengths



**MOSR-LNS-OP-6.5**  
Lens, Opal, 6.5' length



**MOSR-EC-01**  
Solid End Cap

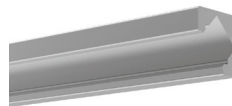
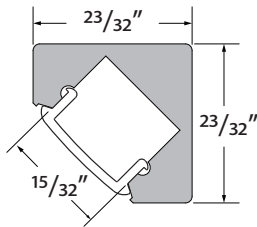


**MOSR-EC-02**  
Powerfeed End Cap



**MTBK-03**  
Mounting Clip

**DYER**



**DYER-CHAN-SLV-6.5**  
Anodized Aluminum Extrusion,  
Available in 6.5' lengths



**DYER-LNS-OP-6.5**  
Lens, Opal, 6.5' length



**DYER-EC-01**  
Solid End Cap

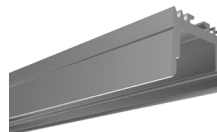
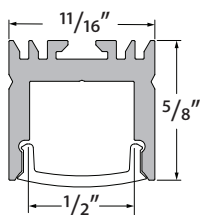
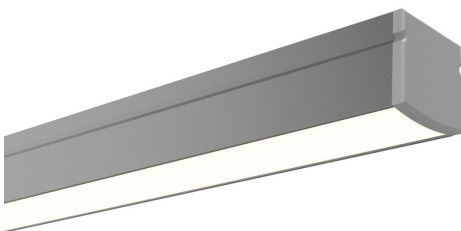


**DYER-EC-02**  
Powerfeed End Cap



**DYER-MTBK**  
Mounting Clip

**VALENCIA**



**VALN-CHAN-SLV-6.5**  
Anodized Aluminum Extrusion,  
Available in 6.5' lengths



**VALN-LNS-OP-6.5**  
Lens, Opal, 6.5' length



**VALN-EC-01**  
Solid End Cap

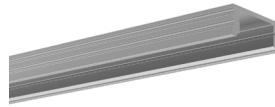
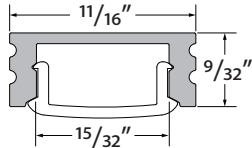
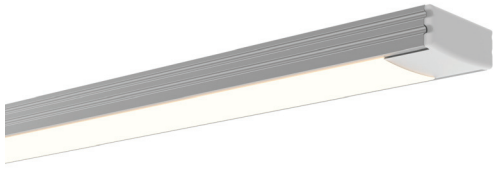


**VALN-EC-02**  
Powerfeed End Cap



**VALN-MTBK**  
Mounting Clip

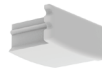
**MINI**



**MINI-CHAN-SLV-6.5**  
Anodized Aluminum Extrusion,  
Available in 6.5' lengths



**MINI-LNS-OP-6.5**  
Lens, Opal, 6.5' length



**MINI-EC-01**  
Solid End Cap



**MINI-EC-02**  
Powerfeed End Cap

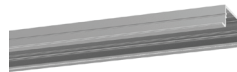
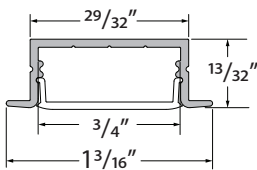
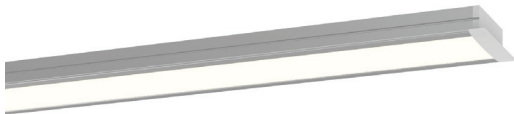


**MINI-MTBK**  
Mounting Clip



**MINI-ADJ-MTBK**  
Adjustable Mounting  
Clip

**WARNER**



**WRNR-CHAN-SLV-6.5**  
Anodized Aluminum Extrusion,  
Available in 6.5' lengths



**WRNR-LNS-OP-6.5**  
Lens, Opal, 6.5' length



**WRNR-EC-01**  
Solid End Cap

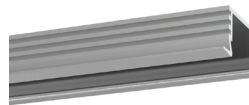
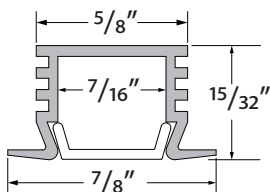
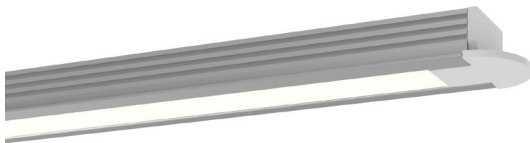


**WRNR-EC-02**  
Powerfeed End Cap



**WRNR-MTBK**  
Mounting Clip

**EDINGER**



**EDIN-CHAN-SLV-6.5**  
Anodized Aluminum Extrusion,  
Available in 6.5' lengths



**EDIN-LNS-OP-6.5**  
Lens, Opal, 6.5' length



**EDIN-EC-01**  
Solid End Cap

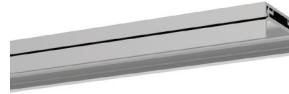
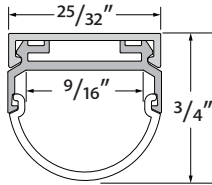
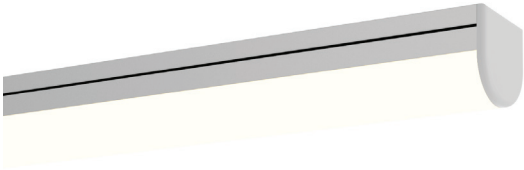


**EDIN-EC-02**  
Powerfeed End Cap



**MTBK-03**  
Mounting Clip

## HORIZON



**HRIZ-CHAN-SLV-6.5**  
Anodized Aluminum Extrusion,  
Available in 6.5' lengths



**HRIZ-LNS-OP-6.5**  
Lens, Opal, 6.5' length

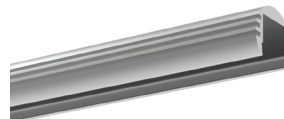
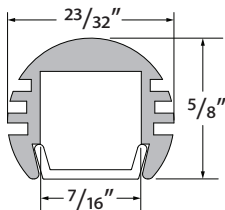
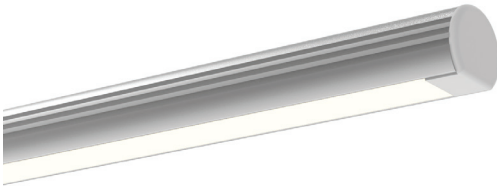


**HRIZ-EC-01**  
Solid End Cap



**HRIZ-EC-02**  
Powerfeed End Cap

## NOVA



**NOVA-CHAN-SLV-6.5**  
Anodized Aluminum Extrusion,  
Available in 6.5' lengths



**NOVA-LNS-OP-6.5**  
Lens, Opal, 6.5' length



**NOVA-EC-01**  
Solid End Cap

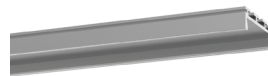
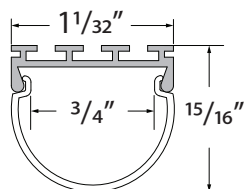


**NOVA-EC-02**  
Powerfeed End Cap



**MTBK-03**  
Mounting Clip

## DOME



**DOME-CHAN-SLV-6.5**  
Anodized Aluminum Extrusion,  
Available in 6.5' lengths



**DOME-LNS-OP-6.5**  
Lens, Opal, 6.5' length

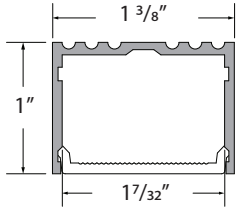
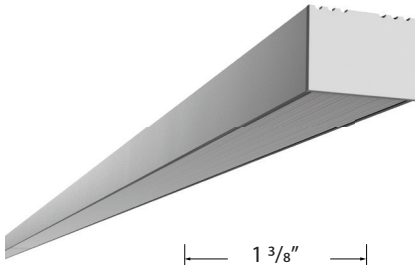


**DOME-EC-01**  
Solid End Cap



**DOME-EC-02**  
Powerfeed End Cap

**ALTON**



**ALTN-CHAN-SLV-6.5**  
Anodized Aluminum Extrusion,  
Available in 6.5' lengths



**ALTN-LNS-OPL-6.5**  
Lens, Opal, 6.5' length



**ALTN-LNS-CLR-6.5**  
Lens, Clear, 6.5' length



**ALTN-LNS-DIF-6.5**  
Lens, Diffuser, 6.5' length

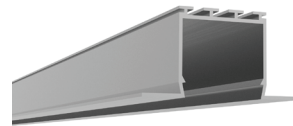
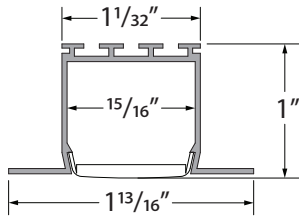
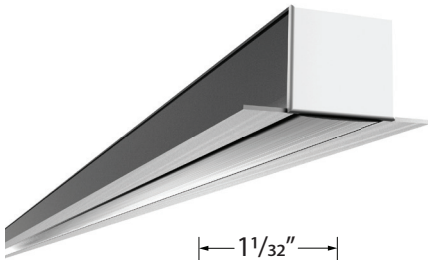


**ALTN-EC-01**  
Solid End Cap



**ALTN-EC-02**  
Powerfeed End Cap

**NOYES**



**NOYS-CHAN-SLV-6.5**  
Anodized Aluminum Extrusion,  
Available in 6.5' lengths



**NOYS-LNS-OPL-6.5**  
Lens, Opal, 6.5' length



**NOYS-LNS-CLR-6.5**  
Lens, Clear, 6.5' length



**NOYS-LNS-DIF-6.5**  
Lens, Diffuser, 6.5' length



**NOYS-EC-01**  
Solid End Cap

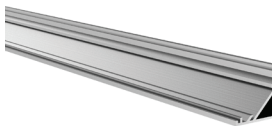
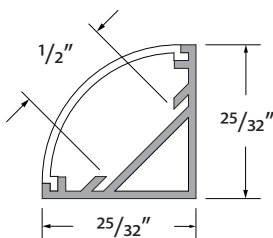
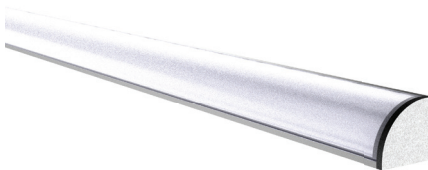


**NOYS-EC-02**  
Powerfeed End Cap



**NOYS-SPRiNG-CLP**  
Clip, Spring, Metal

**MARSALA**



**MRSL-CHAN-SLV-6.5**  
Anodized Aluminum Extrusion,  
Available in 6.5' lengths



**MRSL-LNS-OPL-6.5**  
Lens, Opal, 6.5' length



**MRSL-LNS-CLR-6.5**  
Lens, Clear, 6.5' length



**MRSL-LNS-DIF-6.5**  
Lens, Diffuser, 6.5' length



**MRSL-EC-01**  
Solid End Cap

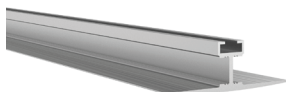
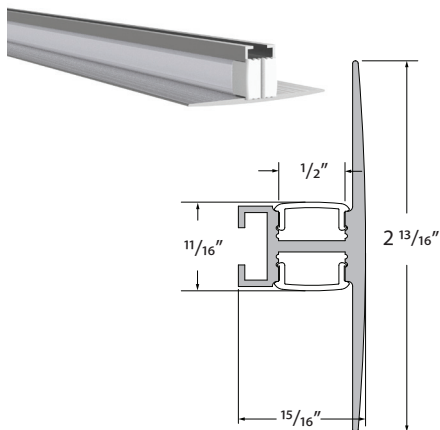


**MRSL-EC-02**  
Powerfeed End Cap



**MRSL-CLP-SLV**  
Clip, Metal

**DEWAR**



**DWAR-CHAN-SLV-6.5**  
Anodized Aluminum Extrusion,  
Available in 6.5' lengths



**DWAR-LNS-OPL-6.5**  
Lens, Opal, 6.5' length



**DWAR-LNS-CLR-6.5**  
Lens, Clear, 6.5' length



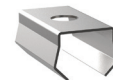
**DWAR-LNS-DIF-6.5**  
Lens, Diffuser, 6.5' length



**DWAR-EC-01**  
Solid End Cap

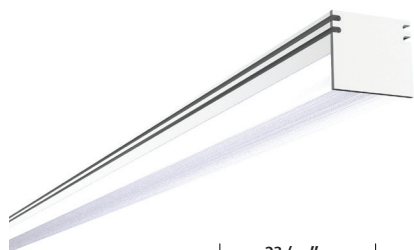


**DWAR-EC-02**  
Powerfeed End Cap



**DWAR-CLP-SLV**  
Clip, Metal

**ASTORIA**



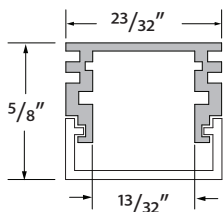
**ASTR-CHAN-SLV-6.5**  
Anodized Aluminum Extrusion,  
Available in 6.5' lengths



**ASTR-LNS-DIF-6.5**  
Lens, Diffuser, 6.5' length



**ASTR-LNS-CLR-6.5**  
Lens, Clear, 6.5' length



**ASTR-EC-01**  
Solid End Cap

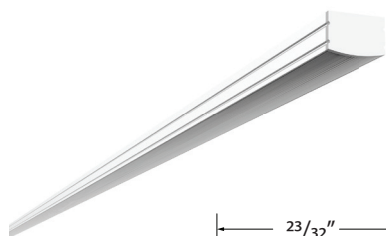


**ASTR-EC-02**  
Powerfeed End Cap



**ASTR-CLP-SLV**  
Clip, Metal

**MOFETT**



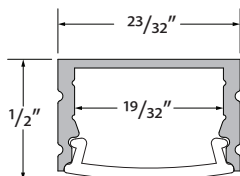
**MOFT-CHAN-SLV-6.5**  
Anodized Aluminum Extrusion,  
Available in 6.5' lengths



**MOFT-LNS-OPL-6.5**  
Lens, Opal, 6.5' length



**MOFT-LNS-CLR-6.5**  
Lens, Clear, 6.5' length



**MOFT-LNS-DIF-6.5**  
Lens, Diffuser, 6.5' length



**MOFT-EC-01**  
Solid End Cap



**MOFT-EC-02**  
Powerfeed End Cap

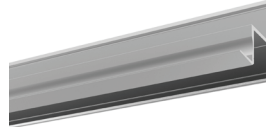
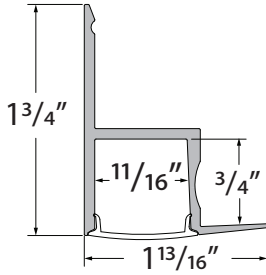


**MOFT-CLP-SLV**  
Clip, Metal



**EDGE**

---



**EDGE-CHAN-SLV-6.5**  
Anodized Aluminum Extrusion,  
Available in 6.5' lengths



**EDGE-LNS-OP-6.5**  
Lens, Opal, 6.5' length



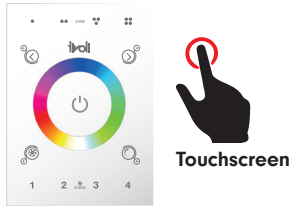
**EDGE-EC-01**  
Solid End Cap



**EDGE-EC-02**  
Powerfeed End Cap

## Controls & Software

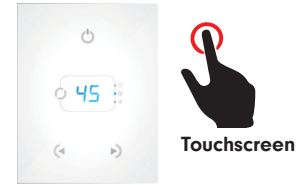
### CONTROLS



**TVOQ-1-WH**  
WH (White only)  
512 DMX channel, 16 scene,  
4 zone, glass touch screen



**TVOQ-10-XX-7**  
XX = BK (Black), WH (White)  
1024 DMX channel, 500 scene,  
10 zone, glass touch screen



**TVOQ-2-XX**  
XX = BK (Black), WH (White)  
512 DMX channel, 99 scene,  
1 zone, glass touch screen

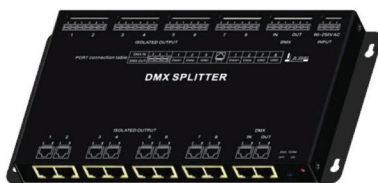
### SOFTWARE



Cue™ and CuePro™ softwares are specifically designed for the TivoCUE™ in-wall DMX controls and includes an array of tools required by the latest DMX lighting fixtures. Intuitive, with easy-to-use effects that can be dropped into timelines, and multi-zone synchronization capabilities allow you to program a project effortlessly.



## Accessories



**DMX-SPLT-8**  
DMX Splitter  
8 ports of DMX 512, RJ45 and 3-pin  
Hardwire Connection

Note: If the number of DMX sub-controllers exceed 32 units, a DMX Splitter is required.

## Power Supplies

### ADUL - DMX SINGLE ADDRESS

DESCRIPTION	CAT NO	APPLICATION	PRIMARY VOLTAGE	SECONDARY VOLTAGE	CIRCUIT BREAKERS	MAX LOAD	CIRCUIT CAPACITY
ADUL Series Class 2 Transformer	ADUL-120-1-4-24-DIN	Indoor / Damp	100-277V AC 5ø60 Hz	24V DC	1	96W	4A
	ADUL-240-2-4-24-DIN				2	2x96W	2x4A
	ADUL-320-3-4-24-DIN				3	3x96W	3x4A

### ADUL - DMX MULTI ADDRESS

DESCRIPTION	CAT NO	APPLICATION	PRIMARY VOLTAGE	SECONDARY VOLTAGE	CIRCUIT BREAKERS	MAX LOAD	CIRCUIT CAPACITY
ADUL Series Class 2 Transformer	ADUL-240-2-4-24-DIN-2	Indoor / Damp	100-277V AC 5ø60 Hz	24V DC	2	2x96W	2x4A
	ADUL-320-3-4-24-DIN-3				3	3x96W	3x4A

### ADNM - DMX/DALI FLICKER-FREE FOR TV STUDIO RGB/RGBW

DESCRIPTION	CAT NO	APPLICATION	PRIMARY VOLTAGE	SECONDARY VOLTAGE	CIRCUIT BREAKERS	MAX LOAD	CIRCUIT CAPACITY
ADNM Series Class 2 Transformer	ADNM-120-1-4-24-DTVC	Indoor / Outdoor	100-277V AC 5ø60 Hz	24V DC	1	1x96W	1x4A
	ADNM-240-2-4-24-DTVC				2	2x96W	2x4A
	ADNM-320-3-4-24-DTVC				3	3x96W	3x4A

## DMX Sub-Controller

DESCRIPTION	CAT NO	MODES	WATTAGE	PRIMARY VOLTAGE	DIMENSION
DMX Sub-controller	TPL-RGBW-180-24	Sub-controller only	5X96W	24V DC	2.87" W X 6.46" L X 1.45" H