

VASTGRAZER PALETTE

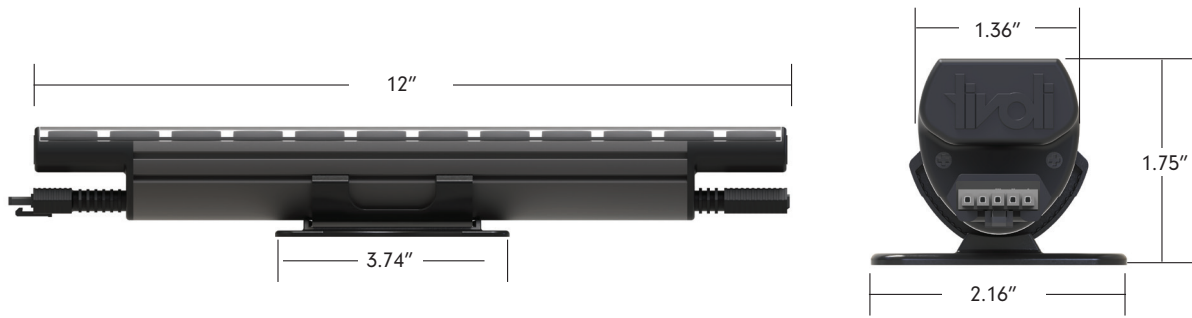




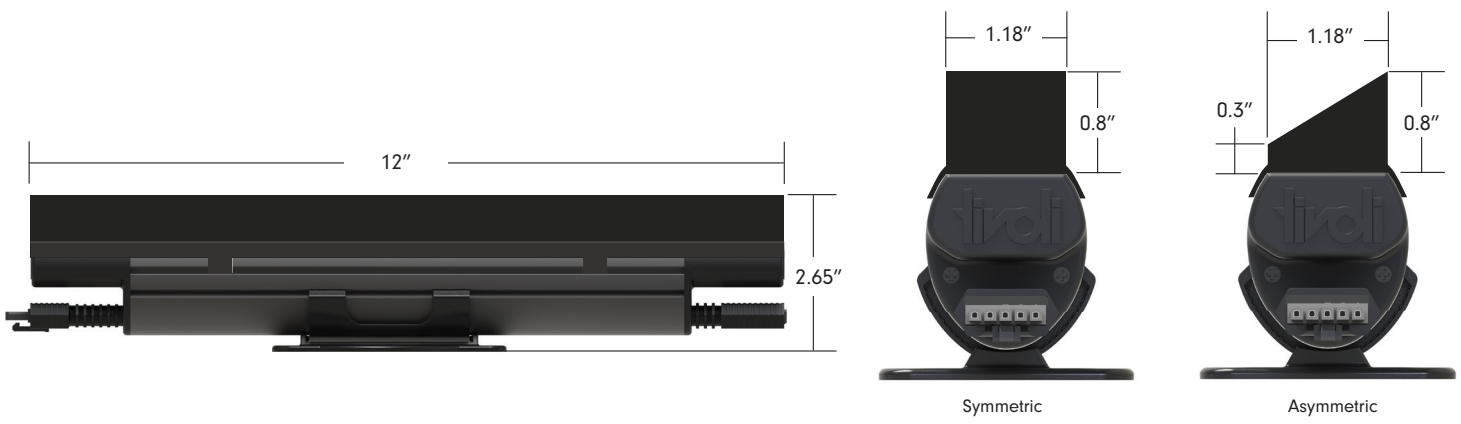
Project: _____ TYPE: _____

- Designed for DMX control
- Self Ballasted 120V AC - 277V AC
- Maximum Run up to 50'
- Flexible connectors accommodate curves
- Adjustable mounting bracket for desired angle
- For Dry/Damp location
- IP52 Rating
- 5 Year warranty

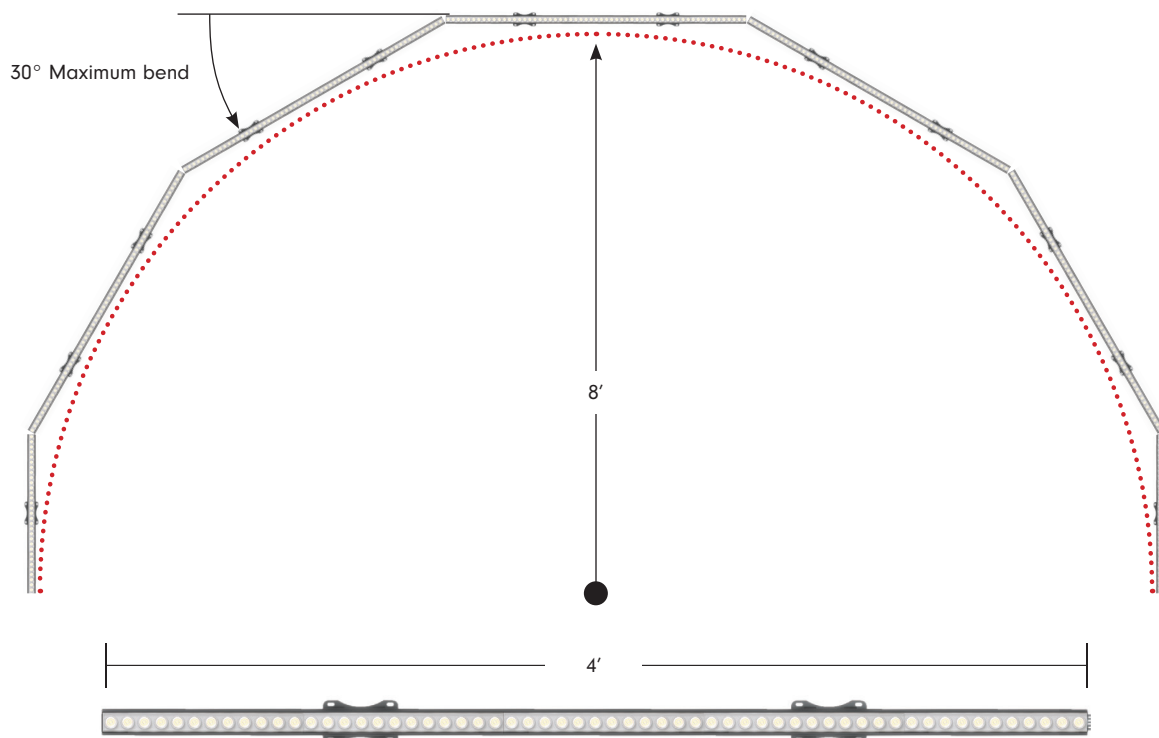
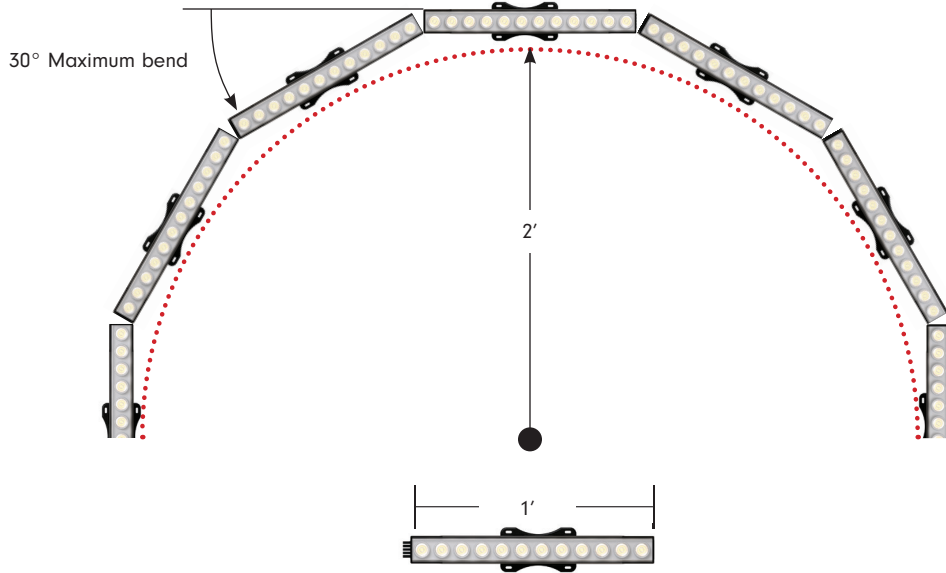
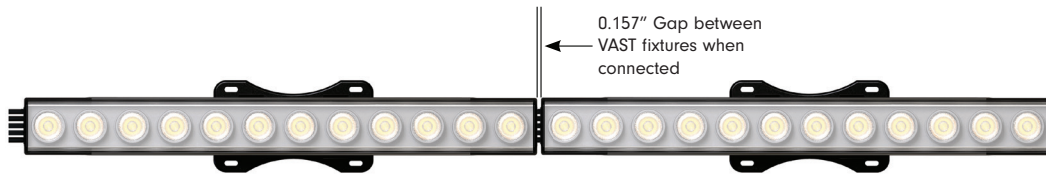
Dimensions



Dimensions with Baffle



Radius Bend



Ordering Guide

PRODUCT CODE	BEAM ANGLE	LED TYPE	HOUSING COLOR	LED COLOR	CONTROL TYPE	LENGTH
VASTGZ		HO	SG			
VASTGZ = VAST Graze	1515 = 15x15 1525 = 15x25 1540 = 15x40 1855 = 18x55 2424 = 24x24 4040 = 40x40 5555 = 55x55	HO = High Output	SG = Space Gray	RGB22 = RGB+2200K RGB30 = RGB+3000K RGB35 = RGB+3500K RGB40 = RGB+4000K RGB53 = RGB+5300K RGB60 = RGB+6000K	01 = DMX/RDM 02 = Auto Address/DM	1 = 1' 4 = 4'

Specification



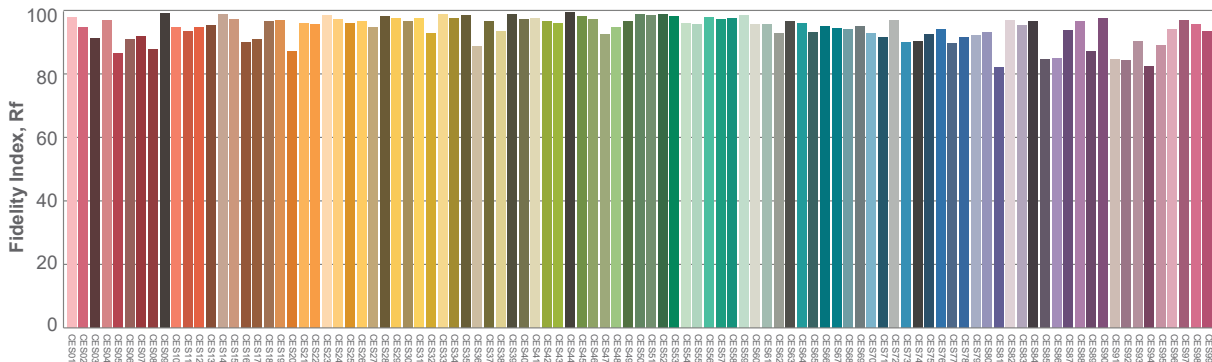
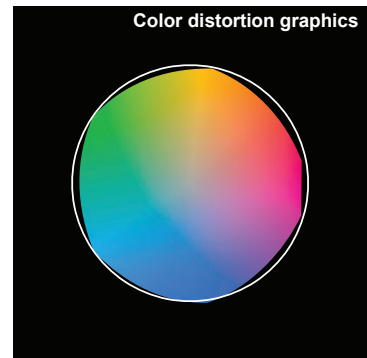
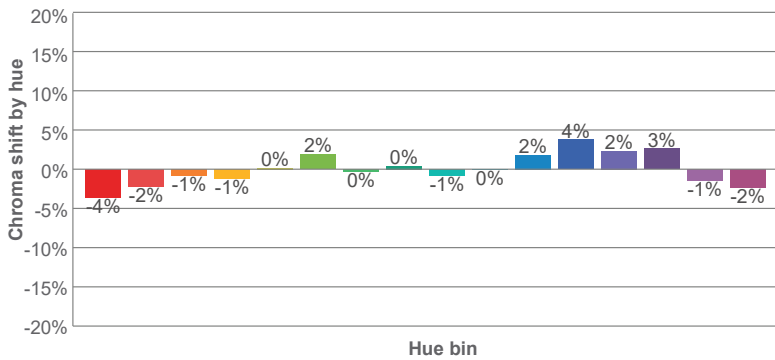
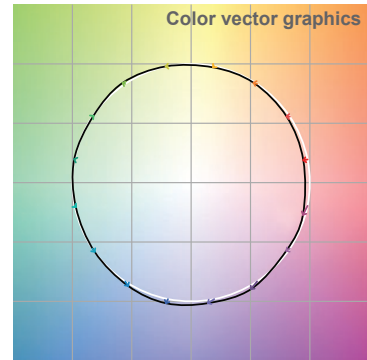
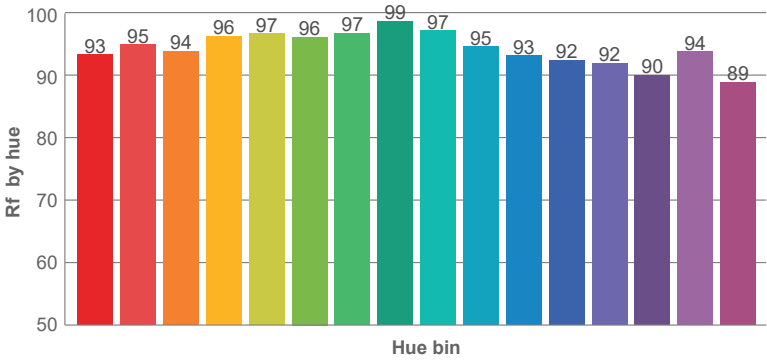
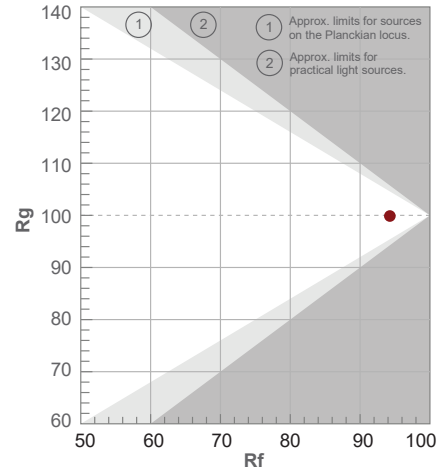
Unit Size	1'	4'
Lumens White (lm/ft) (based on 3000K)	876	3840
Lumens RGB (lm/ft)	564	2880
Lumens Red (lm/ft)	31	183
Lumens Green (lm/ft)	69	434
Lumens Blue (lm/ft)	9	75
Efficacy (based on 3000K)	73	80
CRI	90+	
R9	70	
Optics		
Beam Angle: Symmetrical	15x15/24x24/40x40/55x55	
Beam Angle: Asymmetrical	15x25/15x40/18x55	
Electrical		
Input Voltage	100-277V AC 50/60Hz	
Power Consumption W/unit	12	48
Maximum Run Length	50'	
Control Type	DMX (dimming down to 1%)	
Physical		
Mounting	Surface Mount with adjustable clip	
Operating Temperature	-4°F ~ 149°F (-20°C ~ 65°C)	
Storage Temperature	-13°F ~ 158°F (-25°C ~ 70°C)	
Certification and Testing		
Certification	ETLus, CE, RoHS	
Rated Life	90000 hrs. @ 25°C	
IP Rating	IP52	
Environment	Dry/Damp Location	
Warranty	5 years	

TM-30 (White 2700k)

Rf 94.3
Fidelity index Rf

Rg 99.9
Gamut index Rg

Hue Bin	R _f	Shifts (%)	
		Chroma	Hue
1	93	-4%	0%
2	95	-2%	2%
3	94	-1%	3%
4	96	-1%	1%
5	97	0%	2%
6	96	2%	1%
7	97	0%	-1%
8	99	0%	0%
9	97	-1%	1%
10	95	0%	3%
11	93	2%	4%
12	92	4%	-1%
13	92	2%	-6%
14	90	3%	-8%
15	94	-1%	-3%
16	89	-2%	-8%



Accessories



VAST-T-CONN-XLR-3
T Connector for DMX XLR connection to controller



VAST-T-CONN-SIG
T Connector 6' Power Cable and 6' 0-10V Signal Cable



VAST-T-CONN-CATBW
T Connector with CAT 5/6 connection to Bare Wire power lead



VAST-JUMPER-5P-X
X = 0.5 (6"), 1 (1'), 5 (5'), 10 (10')
Jumper, 5-Pin Connection



JUMPER-XLR3P-X
Jumper Cable 3-PIN XLR
X = 5, 10, 25 (lengths in ft)



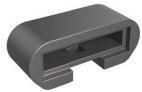
VASTGZ-BAFL-2
Black Symmetrical baffle 1' length



VASTGZ-BAFL-1
Black Asymmetrical baffle 1' length



VAST-CHAN-BLK-6.5
Vast straight channel silver 6.5' length



VAST-TERM-EC
DMX Termination End Cap



VAST-JBOX-X-BLK
X = P (Power Connect), E (0-10V), D (DMX)
Junction box for VAST fixture, Chicago CCEA approved

Controls



ARTNET-S-8-512
8 port universe Artnet to DMX interface, 4096 DMX channels
Programmable for playback and live support



TVOQ-10-XX-7
XX = BK (Black), WH (White)
1024 DMX channel, 500 scene, 10 zone, glass touch screen



TVOQ-2-BK
512 DMX channel, 99 scene, 1 zone, glass touch screen



TVOQ-1-WH
16 DMX channel, 16 scene, 4 zone, glass touch screen

Controls

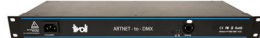


MDRX-AURA-XX
X = **02, 12, 32** (ports)
MADRIX Aura is a stand-alone controller for up to 2, 12, or 32 universes per unit

Network Hardware



MDRX-LUNA-XX
X = **4, 8, 16** (ports)
MADRIX Luna 4, 8, 16 port universe Artnet to DMX interface 16 port 8192, 8 port 4096, 4 port 2048 DMX channels



ARTNET-L-X-512
X = **8, 16** (ports)
8 or 16 port universe Artnet to DMX interface, 16 port 8192 DMX channels 8 port 4096 DMX channels



NTG-SWI-XPT
X = **8** (8 port), **16** (16 port)
NETGEAR 8 or 16 Port gigabit gthernet Unmanaged Switch



DMX3-X-CAT5-ADPTR
X = **M** (Male), **F** (Female)
DMX Adapter
3-pin XLR to RJ45



DMX5-X-CAT5-ADPTR
X = **M** (Male), **F** (Female)
DMX Adapter
5-pin XLR to RJ45

MADRIX5 Key & Software Levels



MADRIX KEY

A USB dongle unlocks the software's full output. You can freely switch between different PCs as it is not bound to a specific one. It only needs to be activated online once.

MADRIX 5 LICENSE UPGRADES

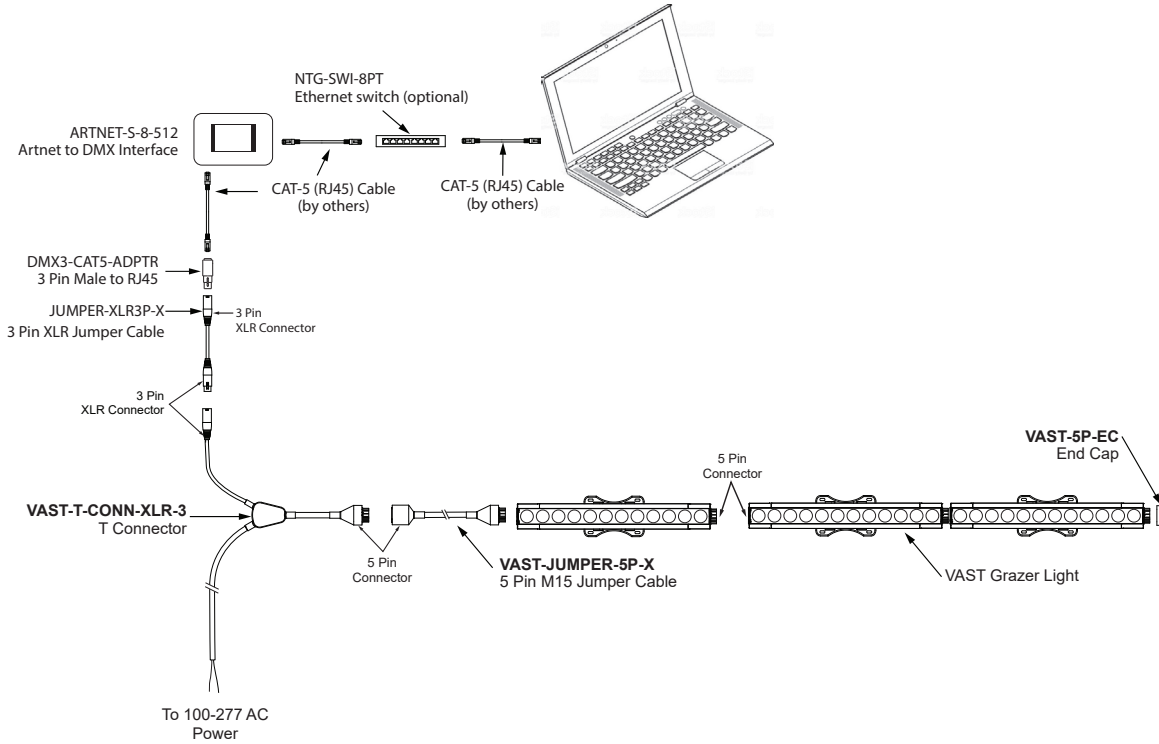
You can easily upgrade your MADRIX 5 KEY to any higher license at any time, increasing the available output.

Level	START	ENTRY	BASIC	PROFESSIONAL	ULTIMATE	MAXIMUM
MADRIX 5 Order Code	MDRX-LC-5S	MDRX-LC-5E	MDRX-LC-5B	MDRX-LC-5P	MDRX-LC-5U	MDRX-LC-5M
DMX-Based Output						
DMX Channels	1,024	4,096	16,384	65,536	262,144	1,048,576
DMX Universe Example	2	8	32	128	512	2,048
RGB Voxels Example	341	1,365	5,461	21,845	87,381	349,525
DVI-Based Output						
DVI Voxels	4,096	16,384	262,144	1,048,576	2,097,152	2,097,152
Render Resolution (Pixel x Pixel)	64 x 64	128 x 128	512 x 512	1,024 x 1,024	2,048 x 1,024	2,048 x 1,024

Wiring Diagram - Offline

ARNET-S (Stand Alone)

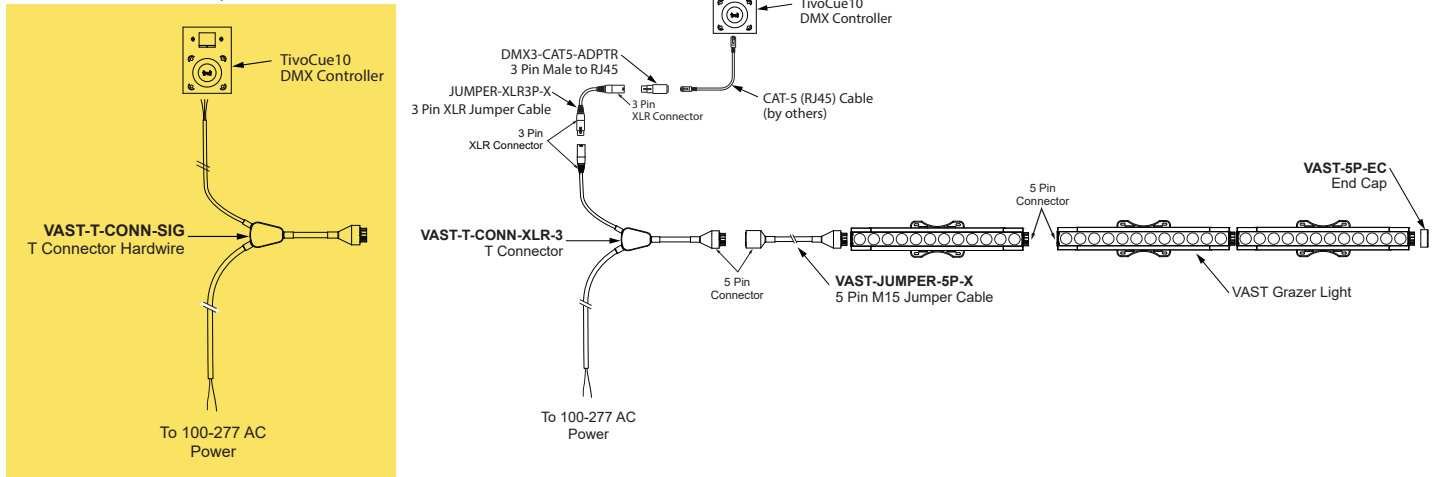
Programmed via MADRIX software and recorded directly to an ARNET-S interface for media applications and performance. This is a stand-alone feature with no need for network support by software (MADRIX) once recorded to the interface (ARNET-S). Please refer to ARTNET-S-8-512 User Manual for additional information.



TivoCUE (Stand Alone)

Programmed via CUE software and recorded to a MicroSD card for data transfer into TivoCUE control. This is a stand-alone feature with no need for network support by software (CUE PRO) once recorded and transferred to in-wall DMX control hardware (TivoCUE). Please refer to TivoCue 10 User Manual for additional information.

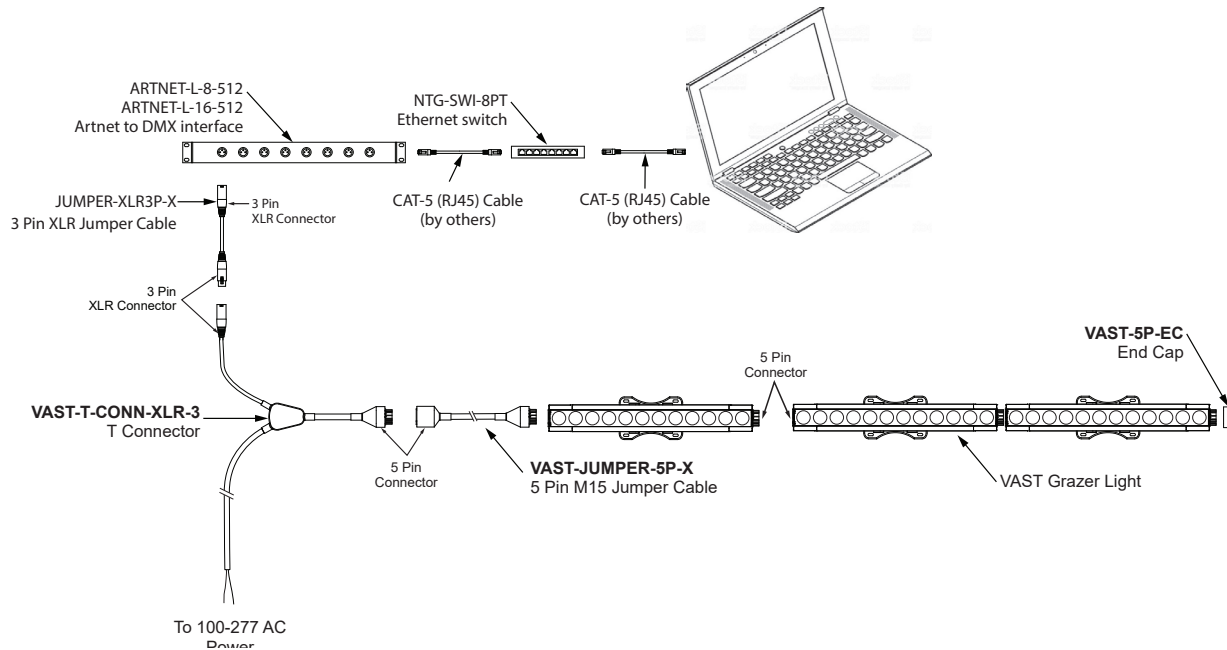
Hardwire Connection Option



Wiring Diagram - Online

LIVE CONFIGURATION

This is a live control performance setup. Widely used for concerts or performance-based manipulation. Use of a live network is necessary for communication between MADRIX software and fixture.



Tivoli Commissioning Service

Tivoli’s DMX Commissioning service involves the setup and configuration of our DMX lighting and control system, ensuring the seamless integration of our lighting fixtures with the specified DMX Control system ordered.

For more information about commission service, contact:
 sales@tivoliusa.com
 714-957-6101 (Engineering Tech Support)

Tivocue Wall Controllers (Default Scenes: White, Red,Green, Blue, Light Blue, Purple, Pink, Dim White, Yellow, Cool Cycle, Warm Cycle, All Cycle, Rainbow Scroll, Blackout)	
TVOQ-REM-COMM-1	Remote DMX commissioning for TIVOCUE 2 and 10 dmx wall controller. Pixel mapping/control is not offered for remote commissioning
TVOQ-ONS-COMM-1	Onsite DMX commissioning for TIVOCUE 2 and 10 dmx wall controller (est. 2 days)
ARTNET-S-8-512 (Default Scenes: White, Red,Green, Blue, Light Blue, Purple, Pink, Dim White, Yellow, Cool Cycle, Warm Cycle, All Cycle, Rainbow Scroll, Blackout)	
ARTNET-S-REM-COMM-8	Remote DMX commissioning for artnets recorder up to 8 universes. Pixel mapping/control is not offered for remote commissioning
ARTNET-S-ONS-COMM-8	Onsite DMX commissioning for artnets recorder up to 8 universes (est. 3 days)
MADRIX DMX SYSTEM	
DMX-COMM-2U-MDRX	Onsite commissioning for mardix, up to 2 universes (est. 3 days)
DMX-COMM-8U-MDRX	Onsite commissioning for mardix, up to 8 universes (est. 3 days)
DMX-COMM-16U-MDRX	Onsite commissioning for mardix, up to 16 universes (est. 4 days)
DMX-COMM-24U-MDRX	Onsite commissioning for mardix, up to 24 universes (est. 4 days)
DMX-COMM-32U-MDRX	Onsite commissioning for mardix, up to 32 universes (est. 5 days)
32+ UNIVERSE	Contact factory