

The image shows a multi-level, curved interior space. In the foreground, there is a large, circular, blue upholstered seating area with a central circular table holding a small potted plant. To the right, a white staircase with a curved railing leads up. The walls and ceiling are made of light-colored wood with curved lines. A large, modern chandelier with many vertical light tubes hangs from the ceiling. In the background, there are glass railings and some art pieces on display.

tivoli

Flexile**LG**  
VERTICAL



Project: \_\_\_\_\_ Type: \_\_\_\_\_

## Product Features

- Lighted surface illuminates 360° uniformly without any shadowing
- Multiple lengths with multiple vertical mounting options for various applications
- High luminous efficiency with LM80 report
- UV Stabilized with food-grade environmental silicone housing (no yellowing or cracking)
- Resistance to saline solutions, acids, alkali, and corrosive gases
- Low Voltage 24V DC

## Order Specification Guide

PRODUCT CODE	PROFILE	TYPE	LED COLOR	LENGTH	VOLTAGE
<b>FLXPNDTV</b> FLXPNDTV = Flexile Vertical Pendant	<b>LG</b> LG = Large	<b>TO</b> = Suspended Mount Top Outlet <b>SO</b> = Suspended Mount Side Outlet <b>SF</b> = Surface Mount	<b>23</b> = 2300K <b>27</b> = 2700K <b>30</b> = 3000K <b>35</b> = 3500K <b>40</b> = 4000K	<b>024</b> = 2' <b>048</b> = 4' <b>096</b> = 8'	<b>24</b> 24 = 24V DC

## Specifications



LED Intensity	2300K	2700K	3000K	3500K	4000K
Lumens (lm/ft)	300	325	333	N/A	345
Beam Angle	360°				
Efficacy (lm/W)	66.6	72.4	74	N/A	76.6
CRI	95	95	95	95	95
<b>Electrical</b>					
Dimming	TRIAC, ELV, MLV, 0-10V, DMX				
Input Voltage	24V DC				
Power Consumption (W/ft)	4.5				
Maximum Run	20'				
<b>Physical</b>					
Dimensions (DIA) PC Tube	1.15"				
Dimensions (DIA) Flexile	0.98"				
Material (Flexile)	Silicone				
Material (Tube)	PC				
Storage Temperature	-0°C / -32°F ~ 60°C / 140°F				
Working Temperature	-20°C / -68°F ~ 55°C / 131°F				
<b>Certification and Testing</b>					
Certification	cULus, CE, RoHS, IK08				
Environment	Dry Location				
Rated Hours (TM80)	70000 hrs.				
Warranty	3 Years				

**Mounting Options**

— Cable & Power Feed Direction  
 — Power Feed Direction

**SF**  
 Surface  
 Side and top power outlet  
 natural aluminum finish



**TO**  
 Suspended  
 Top cable outlet  
 natural aluminum finish



**SO**  
 Suspended  
 Side cable outlet  
 natural aluminum finish



**Rigid Tube**  
 2', 4', and 8'  
 available lengths



**Flexile Light Engine**  
 2', 4', and 8'  
 available lengths



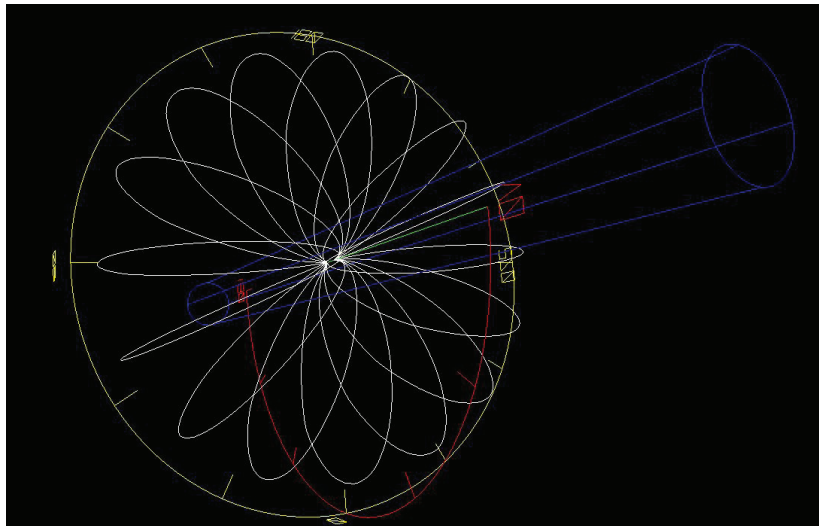
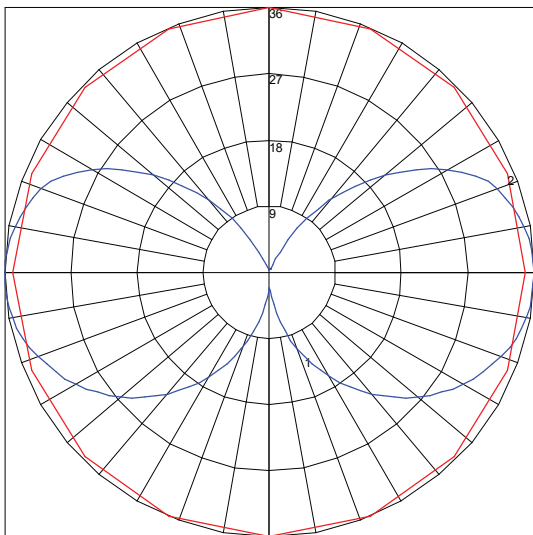
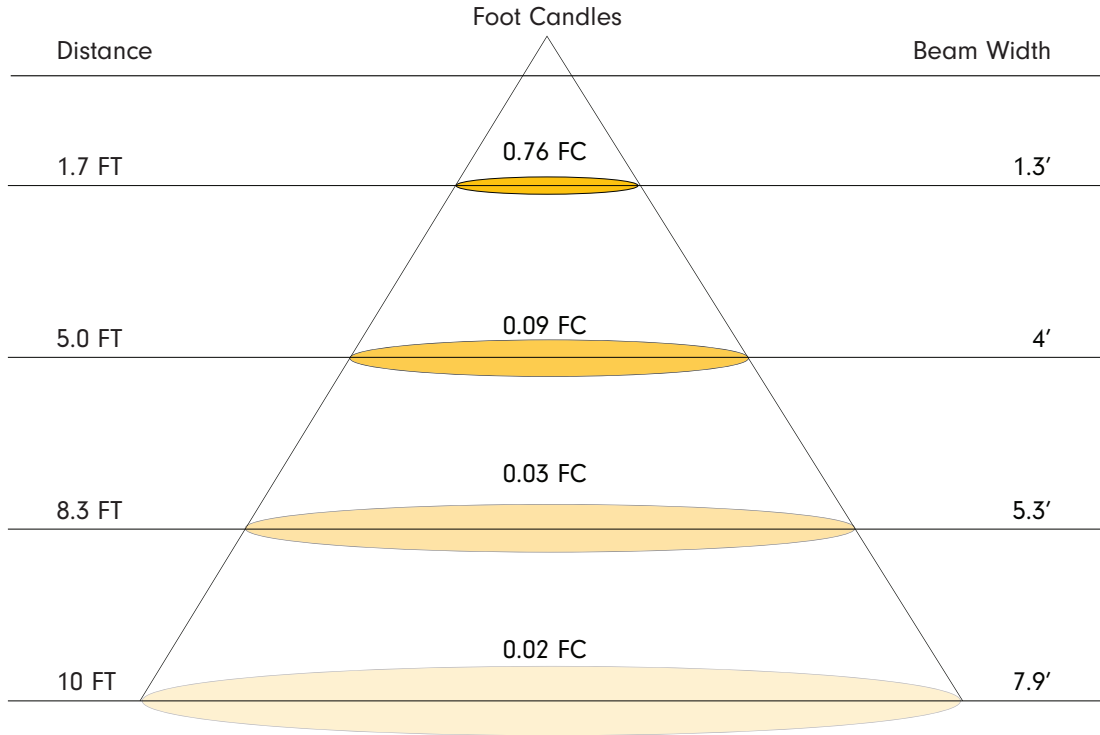
\*Consult factory for lead time and MOQ

**End Cap**  
 Natural aluminum finish end cap to match the SF,  
 TO or SO mounting hardware above



**Photometrics**

Note: Data is based on 3000K



Maximum Candela = 35.8 Located At Horizontal Angle = 90, Vertical Angle = 87.5  
 # 1 - Vertical Plane Through Horizontal Angles (90 - 270) (Through Max. Cd.)  
 # 2 - Horizontal Cone Through Vertical Angle (87.5) (Through Max. Cd.)

**Replacement Parts**



**FLXPNDTV-LG-SF**  
Vertical Pendant surface-mount bracket with both, side, and top power feed and natural aluminum finish



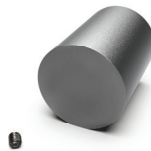
**FLXPNDTV-LG-TO**  
Vertical Pendant suspended-mount bracket with TOP cable outlet and natural aluminum finish



**FLXPNDTV-LG-SO**  
Vertical Pendant suspended-mount bracket with SIDE cable outlet and natural aluminum finish



**FLXPNDTV-LG-PCTB**  
Clear polycarbonate tube, length 8' sold each



**FLX-LG-EC**  
Flexile Large end cap with natural aluminum finish sold each

**Extra Lead Prep**

**FLX-XEP**  
Extra lead wire for extended length.  
Sold per ft.

## Power Supplies - Indoor & Outdoor Cont.

### INFINITY - MLV / ELV / 0-10V / PWM / TRIAC DIMMING

DESCRIPTION	CAT NO	APPLICATION	PRIMARY VOLTAGE	SECONDARY VOLTAGE	CIRCUIT BREAKERS	MIN LOAD	MAX LOAD	CIRCUIT CAPACITY
Infinity Series Class 2 Transformer	INF-J-30-1-1.3-24	Indoor / Outdoor	100 - 277V AC	24V DC	1	3W	30W	1.3A
	INF-J-60-1-2.5-24				1	6W	60W	2.5A
	INF-J-96-1-4-24				1	9W	96W	4A
	INF-J-192-2-4-24				2	2x9W	2x96W	2x4A
	INF-J-288-3-4-24				3	3x9W	3x96W	3x4A

## Power Supplies - Indoor Only

### ADUL - NON DIMMING

DESCRIPTION	CAT NO	APPLICATION	PRIMARY VOLTAGE	SECONDARY VOLTAGE	CIRCUIT BREAKERS	MAX LOAD	CIRCUIT CAPACITY
ADUL Series Class 2 Transformer	ADUL-120-1-4-24-D	Indoor / Damp	100-277V AC 5% <sub>60</sub> HZ	24V DC	1	96W	4A
	ADUL-240-2-4-24-D				2	2x96W	2x4A
	ADUL-320-3-4-24-D				3	3x96W	3x4A

### ADUL - 0-10V DIMMING

DESCRIPTION	CAT NO	APPLICATION	PRIMARY VOLTAGE	SECONDARY VOLTAGE	CIRCUIT BREAKERS	MAX LOAD	CIRCUIT CAPACITY
ADUL Series Class 2 Transformer	ADUL-120-1-4-24-DOT	Indoor / Damp	100-277V AC 5% <sub>60</sub> HZ	24V DC	1	96W	4A
	ADUL-240-2-4-24-DOT				2	2x96W	2x4A
	ADUL-320-3-4-24-DOT				3	3x96W	3x4A

### ADUL - DMX SUB CONTROLLER (Single Address)

DESCRIPTION	CAT NO	APPLICATION	PRIMARY VOLTAGE	SECONDARY VOLTAGE	CIRCUIT BREAKERS	MAX LOAD	CIRCUIT CAPACITY
ADUL Series Class 2 Transformer	ADUL-120-1-4-24-DIN	Indoor / Damp	100-277V AC 5% <sub>60</sub> Hz	24V DC	1	96W	4A
	ADUL-240-2-4-24-DIN				2	2x96W	2x4A
	ADUL-320-3-4-24-DIN				3	3x96W	3x4A

### ADUL - DMX SUB CONTROLLER (Multi Address)

DESCRIPTION	CAT NO	APPLICATION	PRIMARY VOLTAGE	SECONDARY VOLTAGE	CIRCUIT BREAKERS	MAX LOAD	CIRCUIT CAPACITY
ADUL Series Class 2 Transformer	ADUL-240-2-4-24-DIN-2	Indoor / Damp	100-277V AC 5% <sub>60</sub> Hz	24V DC	2	2x96W	2x4A
	ADUL-320-3-4-24-DIN-3				3	3x96W	3x4A