

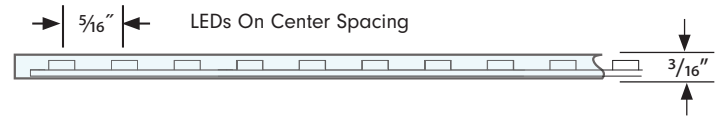
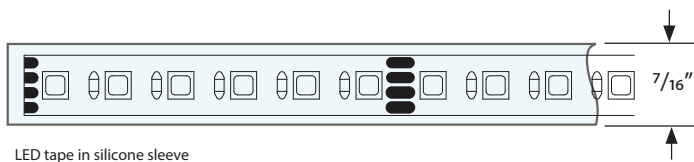


Project: _____ Length: _____

Product Features

- Covered by a silicone sleeve and factory sealed to each specific length.
- 3-in-1 RGB chip
- Tight SMD LED spacing produces smooth visual delivery
- Multiple mounting options with Tivoli’s Urban channel series.
- Dimmable with DMX protocol (see power supply page for options)
- DMX Controllable and compatible with Tivoli’s own CUEpro software (sold separately)
- Low Voltage (24V DC)
- IP67 rated
- 3 year warranty

Dimensions



Order Guide

PRODUCT CODE	INSTALL	LED TYPE	*MAX RUN	VOLTAGE
TPLFS	O	RGB		24

TPLFS = Fuse Tape **O** = Outdoor **RGB** = RGB mixing **MR** = Max Run **24** = 24V DC

* Optional - Leave blank if not needed

Note: A layout/drawing must accompany each order showing run length and location

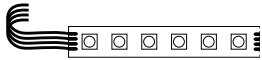
Note: Runs with LEAD-C are rounded **up** to next cut interval (unless otherwise specified)

Note: Runs with LEAD-D are rounded **down** to next cut interval (unless otherwise specified)

Specification

Electrical	
Input Voltage	24V DC
Dimming Option	DMX
Power Supply	Class 2
Wire Size (End Prep)	20 AWG, 4 wire
Power Consumption	4.4W/ft.
Color Temperature (CCT)	Red (620-625 nm), Green (527-532 nm), Blue (470-475 nm)
Lumen Output	125 (Total On)
Physical	
LED Package	3535
Cut Increments	2" (non-field cuttable - Factory prep only)
LEDs/ft.	36
Operating Temperature	-40°F (-40°C) to 140°F (60°C)
Maximum Run Length	22'
Copper Trace	3 oz.
Adhesive	3M VHB Tape
Dimension	5/16" (8mm) TivoTape, 7/16" Silicone Sleeve
Performance	
Lumen Maintenance (L70) Hours	60,000
Binning Tolerance	2 Step MacAdam Elipse
Warranty	3 Years
Certification and Testing	
Certification	cULus
Environment	Wet Location
IP Rating	IP67

Power Leads and Jumpers (Installed by Tivoli's certified solderers)



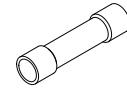
TPL-O-LEAD-4-C
LEAD/END
24" standard 4 conductor
22AWG lead wire factory
attached to one end of tape



TPL-O-LEAD-4-D
LEAD/LEAD
24" standard 4 conductor
22AWG lead wire factory
attached to both ends of tape

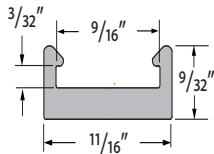


TPL-O-XEP-4
EXTRA LEAD WIRE
Additional factory attached
22AWG lead 4 wire to extend
lengths of LEAD-C and LEAD-D
up to 20 ft. max
Sold per foot

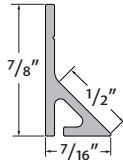


TPL-O-CONN
18-22AWG BUTT CONNECTORS
Used to interconnect factory
attached lead wires.
Sold individually.

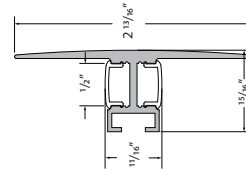
Compatible Extrusions



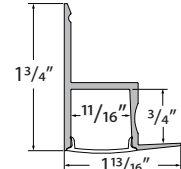
MCHAN-8-LP
Low profile NO LENS OPTION
clear polycarbonate, length 8'



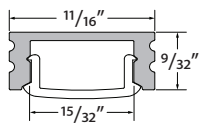
TPL-I-45-MCH-8-S
White PVC, 45° NO LENS
length 8'



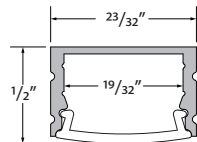
DWAR-CHAN-SLV-6.5
Anodized Aluminum Extrusion,
available in 6.5' lengths



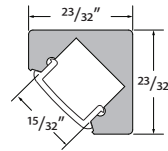
EDGE-CHAN-SLV-6.5
Anodized Aluminum Extrusion,
available in 6.5' lengths



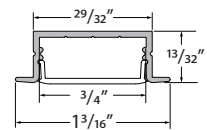
MINI-CHAN-SLV-6.5
Anodized Aluminum Extrusion,
available in 6.5' lengths



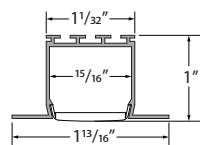
MOFT-CHAN-SLV-6.5
Anodized Aluminum Extrusion,
available in 6.5' lengths



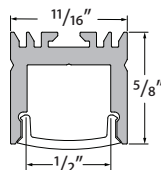
DYER-CHAN-SLV-6.5
Anodized Aluminum Extrusion,
available in 6.5' lengths



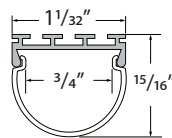
WRNR-CHAN-SLV-6.5
Anodized Aluminum Extrusion,
available in 6.5' lengths



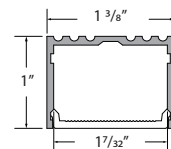
NOYS-CHAN-SLV-6.5
Anodized Aluminum Extrusion,
available in 6.5' lengths



VALN-CHAN-SLV-6.5
Anodized Aluminum Extrusion,
available in 6.5' lengths

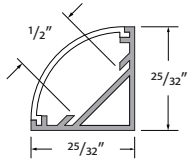


DOME-CHAN-SLV-6.5
Anodized Aluminum Extrusion,
available in 6.5' lengths

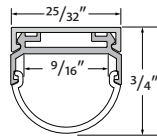


ALTN-CHAN-SLV-6.5
Anodized Aluminum Extrusion,
available in 6.5' lengths

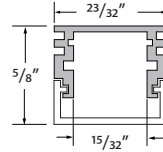
Compatible Extrusions



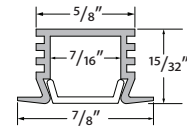
MRSI-CHAN-SLV-6.5
Anodized aluminum extrusion available in 6.5' length



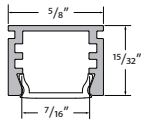
HRIZ-CHAN-SLV-6.5
Anodized aluminum extrusion available in 6.5' length



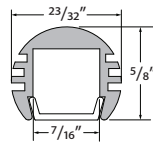
ASTR-CHAN-SLV-6.5
Anodized aluminum extrusion available in 6.5' length



EDIN-CHAN-SLV-6.5
Anodized aluminum extrusion available in 6.5' length



MOSR-CHAN-SLV-6.5
Anodized aluminum extrusion available in 6.5' length



NVOA-CHAN-SLV-6.5
Anodized aluminum extrusion available in 6.5' length

In-Wall Controls



Touchscreen

TVOQ-1-WH
White



Touchscreen

TVOQ-10-XX-7
XX = BK (Black), WH (White)



Touchscreen

TVOQ-2-BK
Black

DMX Sub-Controller

DESCRIPTION	CAT NO	MODES	WATTAGE	PRIMARY VOLTAGE	DIMENSION
DMX Sub-controller	TPL-RGBW-180-24	Sub-controller only	5X96W	24V DC	2.87" W X 6.46" L X 1.45" H

Power Supplies

ADNM - DMX SINGLE ADDRESS

DESCRIPTION	CAT NO	APPLICATION	PRIMARY VOLTAGE	SECONDARY VOLTAGE	CIRCUIT BREAKERS	MAX LOAD	CIRCUIT CAPACITY
ADNM Series Class 2 Transformer	ADNM-90-1-4-24-DIN	Indoor / Outdoor	100-277V AC 50/60 Hz	24V DC	1	90W	3.75A
	ADNM-120-1-4-24-DIN				1	96W	4A
	ADNM-240-2-4-24-DIN				2	2x96W	2x4A
	ADNM-320-3-4-24-DIN				3	3x96W	3x4A

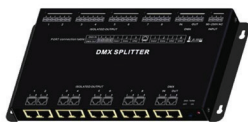
ADNM - DMX MULTI ADDRESS

DESCRIPTION	CAT NO	APPLICATION	PRIMARY VOLTAGE	SECONDARY VOLTAGE	CIRCUIT BREAKERS	MAX LOAD	CIRCUIT CAPACITY
ADNM Series Class 2 Transformer	ADNM-240-2-4-24-DIN-2	Indoor / Outdoor	100-277V AC 50/60 Hz	24V DC	2	2x96W	2x4A
	ADNM-320-3-4-24-DIN-3				3	3x96W	3x4A

ADNM - DMX/DALI FLICKER-FREE FOR TV STUDIO

DESCRIPTION	CAT NO	APPLICATION	PRIMARY VOLTAGE	SECONDARY VOLTAGE	CIRCUIT BREAKERS	MAX LOAD	CIRCUIT CAPACITY
ADNM Series Class 2 Transformer	ADNM-120-1-4-24-DTV	Indoor / Outdoor	100-277V AC 50/60 HZ	24V DC	1	1x96W	1x4A
	ADNM-240-2-4-24-DTV				2	2x96W	2x4A
	ADNM-320-3-4-24-DTV				3	3x96W	3x4A

Accessories



DMX-SPLT-8
DMX Splitter
8 ports of DMX 512, RJ45 and 3-pin
Hardwire Connection

Software



Cue™ and CuePro™ softwares are specifically designed for the TivoCUE™ in-wall DMX controls and includes an array of tools required by the latest DMX lighting fixtures. Intuitive, with easy-to-use effects that can be dropped into timelines, and multi-zone synchronization capabilities allow you to program a project effortlessly.