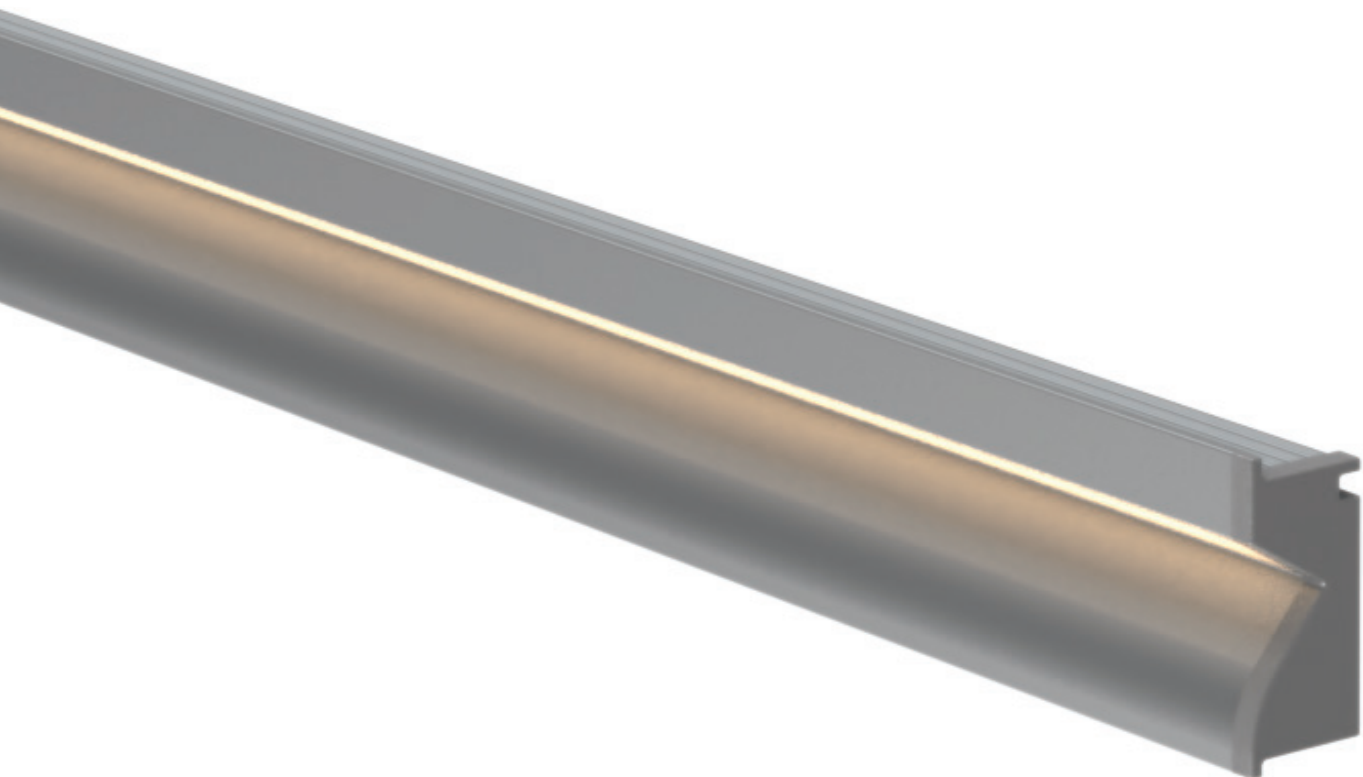
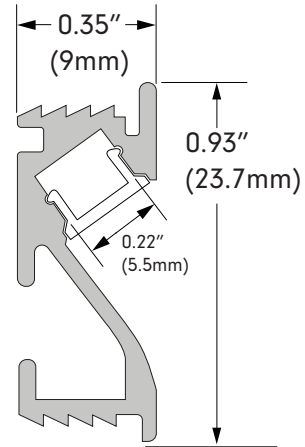
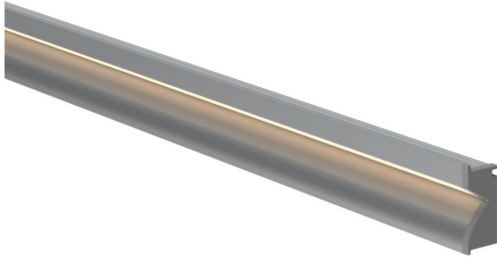


# FABRIANO

Design Guide



Profile & Dimensions



Available TivoTape Options - Indoor

ELITE+  
Slim



Ordering Information



**FABR-CHAN-SLV-6.5**  
Anodized Aluminum Extrusion,  
available in 6.5' length



**FABR-LNS-XXX-6.5**  
**XXX= CLR** (clear), **OPL** (opal),  
**DIF** (diffused), **BLK** (black)  
PC Lens 6.5' length



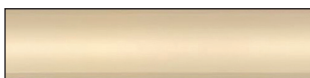
**FABR-EC-01**  
Solid End Cap



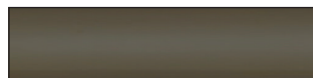
**FABR-EC-02**  
Powerfeed End Cap

Diode Visibility

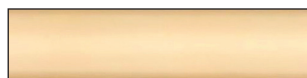
NOTE: Based on ELITE+ SB 3000K



Diffused lens



Black lens



Opal lens



Clear lens