
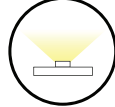



















- 
24V DC
- 
3 W/ft | 210 LM/ft
- 
Non-Field Cuttable
(See page 2 for details)
- 
32'
Max Continuous Run
- 
Dimmable
- 
VHB Tape
- 
IP67
Silicone Jacket
- 
HIGH CRI
90+ CRI
- 
3YR
Warranty
- 
RoHS COMPLIANT
- 
UL US LISTED

- 
2200K
- 
2400K
- 
2700K
- 
3000K
- 
3500K
- 
4000K
- 
5000K

Ordering Information

PRODUCT CODE	INTENSITY	INSTALL	LED COLOR	VOLTAGE
TPLD	SB	O		24
TPLD Tivotape DEFINE 90+ CRI	SB Standard Brightness	O Outdoor	22 2200K 24 2400K 27 2700K 30 3000K 35 3500K 40 4000K 50 5000K	24 24V DC



TivoTape Run Lengths & End Preps
 Please specify length of run with quantity of run(s) and end prep type at time of ordering.
 Note: Only (1) end prep needed for each run (see page 2)
 Outdoor TivoTape is non-field cuttable - Factory Prep Only

Electrical & Photometric Data (Based on 90+ CRI / 3000K)							
Input Voltage	24V DC						
Dimming Option	MLV/ELV/0-10V <i>Consult factory for DMX dimming</i>						
Power Supply	Class 2						
Wire Size (End Prep)	18 AWG, 2 wire						
Power Consumption	3 W/ft.						
Color Temperature (CCT)	2200K	2400K	2700K	3000K	3500K	4000K	5000K
Lumen Output	164	168	205	210	214	216	220
Efficacy	65	69	72	73	75	78	79
Color Rendering Index (CRI)	93	92	92	92	90	90	90
R9	>50						

Physical	
LED Package	3528
Cut Increments	2" (non-field cuttable - Factory prep only)
LEDs/ft	36
Operating Temperature	-40°F (-40°C) ~ 140°F (60°C)
Environment	IP67 Wet Location, Conformally Coated
Maximum Run Length	32'
Copper Trace	3 Ounce
Adhesive	3M VHB Tape
Dimension	7/16" (11.11mm) Jacket

Performance	
Certification	UL Listed
Lumen Maintenance (L70) Hours	60,000
Binning Tolerance	2 Step MacAdam Elipse
Warranty	3 Years

Power Leads and Jumpers (Installed by Tivoli's certified solderers)



TPL-O-LEAD-C

LEAD END

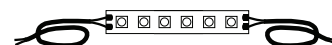
24" standard 2 conductor 18AWG lead wire factory attached to one end of tape.



TPL-O-LEAD-D

LEAD/LEAD

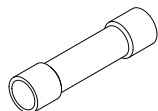
24" standard 2 conductor 18AWG lead wire factory attached to both ends of tape.



TPL-O-XEP

EXTRA LEAD WIRE

Additional factory attached 18AWG lead wire to extend lengths of LEAD-C and LEAD-D up to 20 ft max. Sold per foot (not shipped as spooled wire).



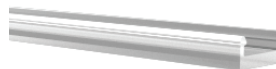
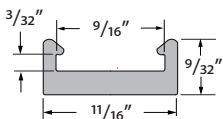
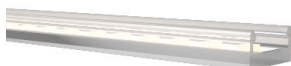
TPL-O-CONN

18-22AWG BUTT CONNECTORS

Used to interconnect factory attached lead wires. Sold individually. (2 ea required per connection).

Mounting Channel

M CHAN

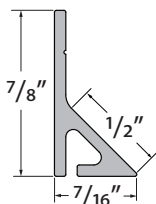


MCHAN-8-LP

Low profile mounting channel, clear polycarbonate, length 8'.

NOTE: No Lens option

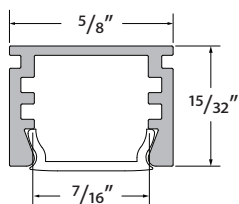
M CHAN 45



TPL-I-45-MCH-8-S

45° Mounting channel, NO LENS OPTION white PVC, length 8'.

MOSHER



MOSR-CHAN-SLV-6.5
Anodized Aluminum Extrusion,
available in 6.5' lengths



MOSR-LNS-OP-6.5
Lens, opal, length 6.5'



MOSR-EC-01
Solid End Cap

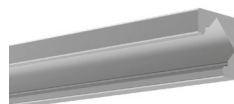
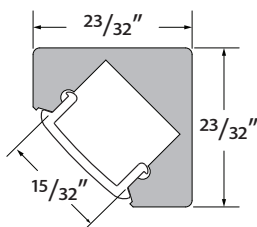


MOSR-EC-02
Powerfeed End Cap



MTBK-03
Mounting Clip

DYER



DYER-CHAN-SLV-6.5
Anodized Aluminum Extrusion,
available in 6.5' lengths



DYER-LNS-OP-6.5
Lens, opal, length 6.5'



DYER-EC-01
Solid End Cap

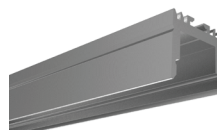
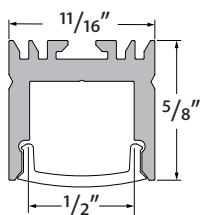
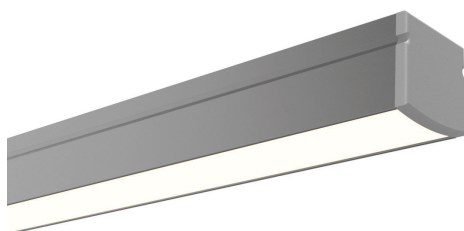


DYER-EC-02
Powerfeed End Cap



DYER-MTBK
Mounting Clip

VALENCIA



VALN-CHAN-SLV-6.5
Anodized Aluminum Extrusion,
available in 6.5' lengths



VALN-LNS-OP-6.5
Lens, opal, length 6.5'



VALN-EC-01
Solid End Cap

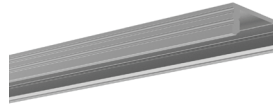
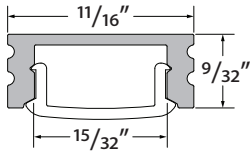
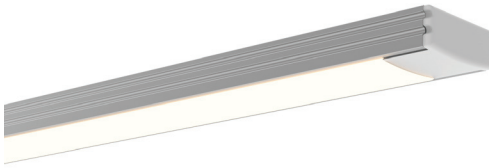


VALN-EC-02
Powerfeed End Cap



VALN-MTBK
Mounting Clip

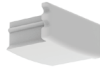
MINI



MINI-CHAN-SLV-6.5
Anodized Aluminum Extrusion,
available in 6.5' lengths



MINI-LNS-OP-6.5
Lens, opal, length 6.5'



MINI-EC-01
Solid End Cap



MINI-EC-02
Powerfeed End Cap

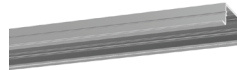
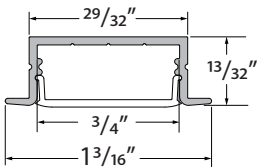


MINI-MTBK
Mounting Clip



MINI-ADJ-MTBK
Adjustable Mounting
Clip

WARNER



WRNR-CHAN-SLV-6.5
Anodized Aluminum Extrusion,
available in 6.5' lengths



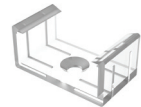
WRNR-LNS-OP-6.5
Lens, opal, length 6.5'



WRNR-EC-01
Solid End Cap

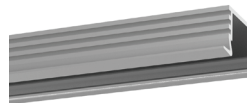
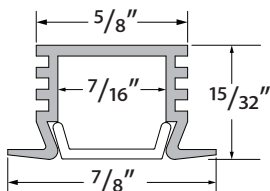
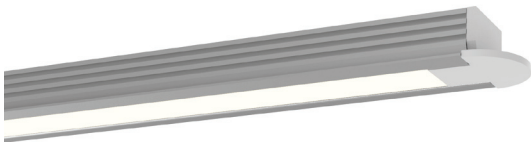


WRNR-EC-02
Power feed End Cap



WRNR-MTBK
Mounting Clip

EDINGER



EDIN-CHAN-SLV-6.5
Anodized Aluminum Extrusion,
available in 6.5' lengths



EDIN-LNS-OP-6.5
Lens, opal, length 6.5'



EDIN-EC-01
Solid End Cap

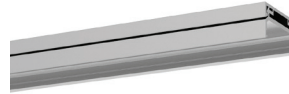
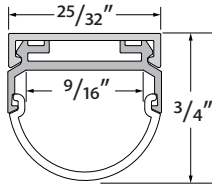
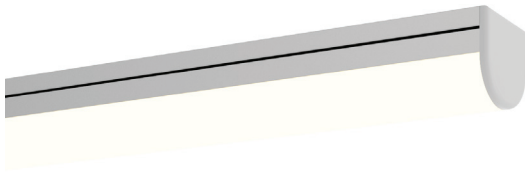


EDIN-EC-02
Powerfeed End Cap



MTBK-03
Mounting Clip

HORIZON



HRIZ-CHAN-SLV-6.5
Anodized Aluminum Extrusion,
available in 6.5' lengths



HRIZ-LNS-OP-6.5
Lens, opal, length 6.5'

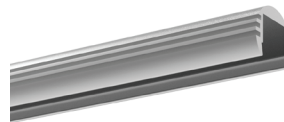
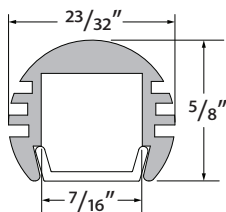


HRIZ-EC-01
Solid End Cap



HRIZ-EC-02
Powerfeed End Cap

NOVA



NOVA-CHAN-SLV-6.5
Anodized Aluminum Extrusion,
available in 6.5' lengths



NOVA-LNS-OP-6.5
Lens, opal, length 6.5'



NOVA-EC-01
Solid End Cap

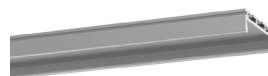
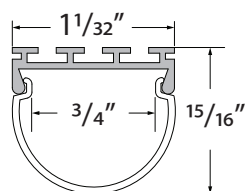


NOVA-EC-02
Powerfeed End Cap



MTBK-03
Mounting Clip

DOME



DOME-CHAN-SLV-6.5
Anodized Aluminum Extrusion,
available in 6.5' lengths



DOME-LNS-OP-6.5
Lens, opal, length 6.5'

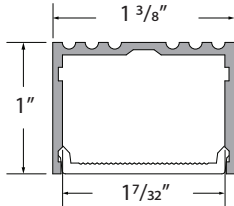
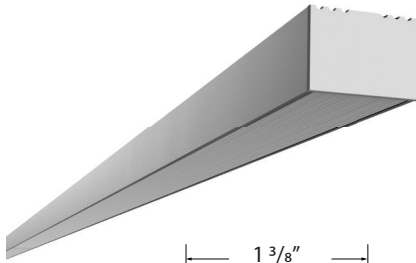


DOME-EC-01
Solid End Cap



DOME-EC-02
Powerfeed End Cap

ALTON



ALTN-CHAN-SLV-6.5
Anodized Aluminum Extrusion,
Available in 6.5' lengths



ALTN-LNS-OPL-6.5
Lens, Opal, 6.5' length



ALTN-LNS-CLR-6.5
Lens, Clear, 6.5' length



ALTN-LNS-DIF-6.5
Lens, Diffuser, 6.5' length

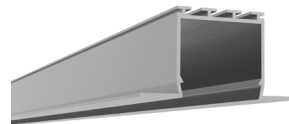
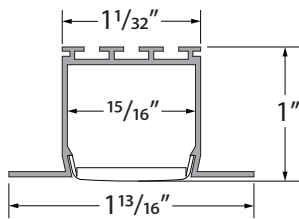
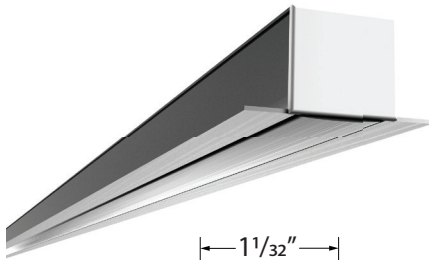


ALTN-EC-01
Solid End Cap



ALTN-EC-02
Powerfeed End Cap

NOYES



NOYS-CHAN-SLV-6.5
Anodized Aluminum Extrusion,
Available in 6.5' lengths



NOYS-LNS-OPL-6.5
Lens, Opal, 6.5' length



NOYS-LNS-CLR-6.5
Lens, Clear, 6.5' length



NOYS-LNS-DIF-6.5
Lens, Diffuser, 6.5' length



NOYS-EC-01
Solid End Cap

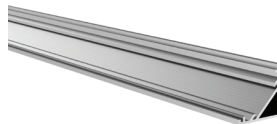
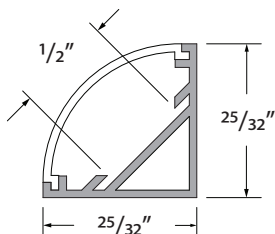
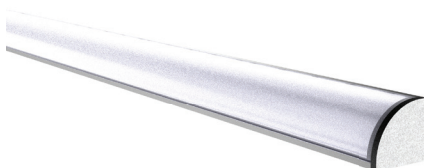


NOYS-EC-02
Powerfeed End Cap



NOYS-SPRING-CLP
Clip, Spring, Metal

MARSALA



MRSL-CHAN-SLV-6.5
Anodized Aluminum Extrusion,
available in 6.5' lengths



MRSL-LNS-OPL-6.5
Lens, opal, length 6.5'



MRSL-LNS-CLR-6.5
Lens, clear, length 6.5'



MRSL-LNS-DIF-6.5
Lens, diffuser, length 6.5'



MRSL-EC-01
Solid End Cap

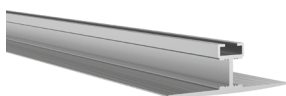
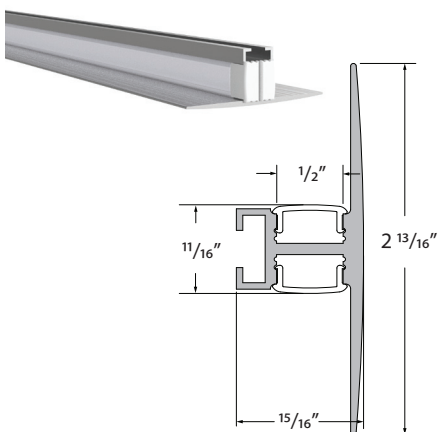


MRSL-EC-02
Powerfeed End Cap



MRSL-CLP-SLV
Clip, Metal

DEWAR



DWAR-CHAN-SLV-6.5
Anodized Aluminum Extrusion,
Available in 6.5' lengths



DWAR-LNS-OPL-6.5
Lens, Opal, 6.5' length



DWAR-LNS-CLR-6.5
Lens, Clear, 6.5' length



DWAR-LNS-DIF-6.5
Lens, Diffuser, 6.5' length



DWAR-EC-01
Solid End Cap

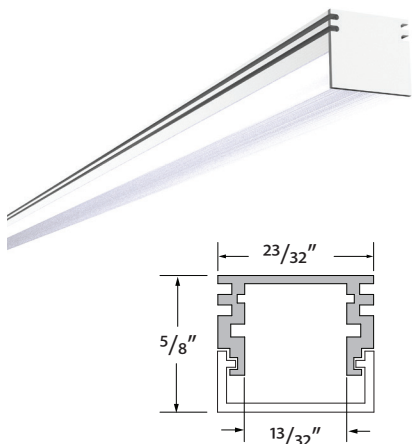


DWAR-EC-02
Powerfeed End Cap



DWAR-CLP-SLV
Clip, Metal

ASTORIA



ASTR-CHAN-SLV-6.5
Anodized Aluminum Extrusion,
Available in 6.5' lengths



ASTR-LNS-DIF-6.5
Lens, Diffuser, 6.5' length



ASTR-LNS-CLR-6.5
Lens, Clear, 6.5' length



ASTR-EC-01
Solid End Cap

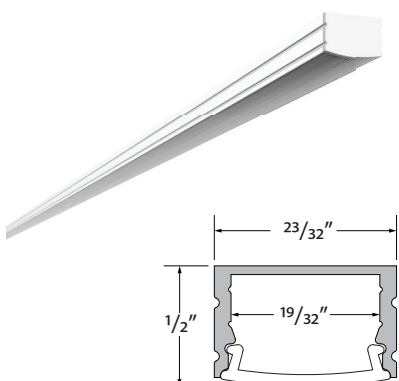


ASTR-EC-02
Powerfeed End Cap



ASTR-CLP-SLV
Clip, Metal

MOFETT



MOFT-CHAN-SLV-6.5
Anodized Aluminum Extrusion,
Available in 6.5' lengths



MOFT-LNS-OPL-6.5
Lens, Opal, 6.5' length



MOFT-LNS-CLR-6.5
Lens, Clear, 6.5' length



MOFT-LNS-DIF-6.5
Lens, Diffuser, 6.5' length



MOFT-EC-01
Solid End Cap

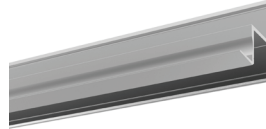
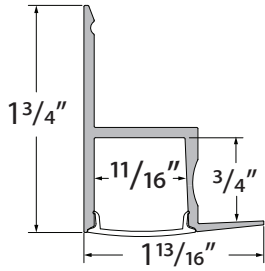


MOFT-EC-02
Powerfeed End Cap



MOFT-CLP-SLV
Clip, Metal

EDGE



EDGE-CHAN-SLV-6.5
Anodized Aluminum Extrusion,
available in 6.5' lengths



EDGE-LNS-OP-6.5
Lens, opal, length 6.5'



EDGE-EC-01
Solid End Cap



EDGE-EC-02
Powerfeed End Cap



Recommended Power Supplies

ADNM - NON DIMMING

DESCRIPTION	CAT NO	APPLICATION	PRIMARY VOLTAGE	SECONDARY VOLTAGE	CIRCUIT BREAKERS	MAX LOAD	CIRCUIT CAPACITY
ADNM Series Class 2 Transformer	ADNM-90-1-4-24-D	Indoor / Outdoor	100-277V AC 5ø60 Hz	24V DC	1	90W	3.75A
	ADNM-120-1-4-24-D				1	96W	4A
	ADNM-240-2-4-24-D				2	2x96W	2x4A
	ADNM-320-3-4-24-D				3	3x96W	3x4A

ADNM - 0-10V DIMMING

DESCRIPTION	CAT NO	APPLICATION	PRIMARY VOLTAGE	SECONDARY VOLTAGE	CIRCUIT BREAKERS	MAX LOAD	CIRCUIT CAPACITY
ADNM Series Class 2 Transformer	ADNM-90-1-4-24-DOT	Indoor / Outdoor	100-277V AC 5ø60 Hz	24V DC	1	90W	3.75A
	ADNM-120-1-4-24-DOT				1	96W	4A
	ADNM-240-2-4-24-DOT				2	2x96W	2x4A
	ADNM-320-3-4-24-DOT				3	3x96W	3x4A

ADNM - DMX SINGLE ADDRESS

DESCRIPTION	CAT NO	APPLICATION	PRIMARY VOLTAGE	SECONDARY VOLTAGE	CIRCUIT BREAKERS	MAX LOAD	CIRCUIT CAPACITY
ADNM Series Class 2 Transformer	ADNM-90-1-4-24-DIN	Indoor / Outdoor	100-277V AC 5ø60 Hz	24V DC	1	90W	3.75A
	ADNM-120-1-4-24-DIN				1	96W	4A
	ADNM-240-2-4-24-DIN				2	2x96W	2x4A
	ADNM-320-3-4-24-DIN				3	3x96W	3x4A

ADNM - DMX MULTI ADDRESS

DESCRIPTION	CAT NO	APPLICATION	PRIMARY VOLTAGE	SECONDARY VOLTAGE	CIRCUIT BREAKERS	MAX LOAD	CIRCUIT CAPACITY
ADNM Series Class 2 Transformer	ADNM-240-2-4-24-DIN-2	Indoor / Outdoor	100-277V AC 5ø60 Hz	24V DC	2	2x96W	2x4A
	ADNM-320-3-4-24-DIN-3				3	3x96W	3x4A

ADNM - DMX/DALI FLICKER-FREE FOR TV STUDIO

DESCRIPTION	CAT NO	APPLICATION	PRIMARY VOLTAGE	SECONDARY VOLTAGE	CIRCUIT BREAKERS	MAX LOAD	CIRCUIT CAPACITY
ADNM Series Class 2 Transformer	ADNM-120-1-4-24-DTV	Indoor / Outdoor	100-277V AC 5ø60 Hz	24V DC	1	1x96W	1x4A
	ADNM-240-2-4-24-DTV				2	2x96W	2x4A
	ADNM-320-3-4-24-DTV				3	3x96W	3x4A



Recommended Power Supplies

INFINITY - MLV / ELV / 0-10V / PWM / TRIAC

DESCRIPTION	CAT NO	APPLICATION	PRIMARY VOLTAGE	SECONDARY VOLTAGE	CIRCUIT BREAKERS	MAX LOAD	MIN LOAD	CIRCUIT CAPACITY
Infinity Series Class 2 Transformer	INF-J-30-1-1.3-24	Indoor / Outdoor	100 - 277V AC	24VDC	1	30W	3W	1.3A
	INF-J-60-1-2.5-24				1	60W	6W	2.5A
	INF-J-96-1-4-24				1	96W	9W	4A
	INF-J-192-2-4-24				2	2x96W	2x9W	2x4A
	INF-J-288-3-4-24				3	3x96W	3X9W	3x4A

Recommended Dimmers

DIMMING - 0-10V

DESCRIPTION	CAT NO	APPLICATION	INPUT VOLTAGE	OUTPUT VOLTAGE	MAX LOAD
0-10V Dimmer	DIM-LD-010	Indoor	12V/24V DC	12V/24V DC	30 mA max. output (sink only)

DIMMING - MLV

DESCRIPTION	CAT NO	APPLICATION	INPUT VOLTAGE	OUTPUT VOLTAGE	MAX LOAD
MLV Dimmer	N-600	Indoor	120V AC	120V AC	450W
	N-1000				800W
	N-1500				1200W
	D-600				450W
	M-600				450W
	M-1000				800W

DIMMING - ELV

DESCRIPTION	CAT NO	APPLICATION	INPUT VOLTAGE	OUTPUT VOLTAGE	MAX LOAD
ELV Dimmer	ME-600	Indoor	120V AC	120V AC	450W
	DE-300				300W

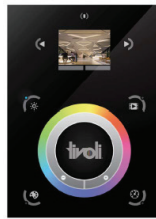
Recommended Dimmers

DIMMING - DMX

DESCRIPTION	CAT NO	APPLICATION	INPUT VOLTAGE	OUTPUT PROTOCOL	MAX UNIVERSE
DMX Controller	TVOQ-1-WH	Indoor	5V DC	DMX 512	1
	TVOQ-2-BK		6V DC		
	TVOQ-2-WH				
	TVOQ-10-BK-7				
	TVOQ-10-WH-7		6-7V DC		2



TVOQ-1-WH
WH (White only)



TVOQ-10-XX-7
XX = BK (Black), WH (White)



TVOQ-2-XX
XX = BK (Black), WH (White)