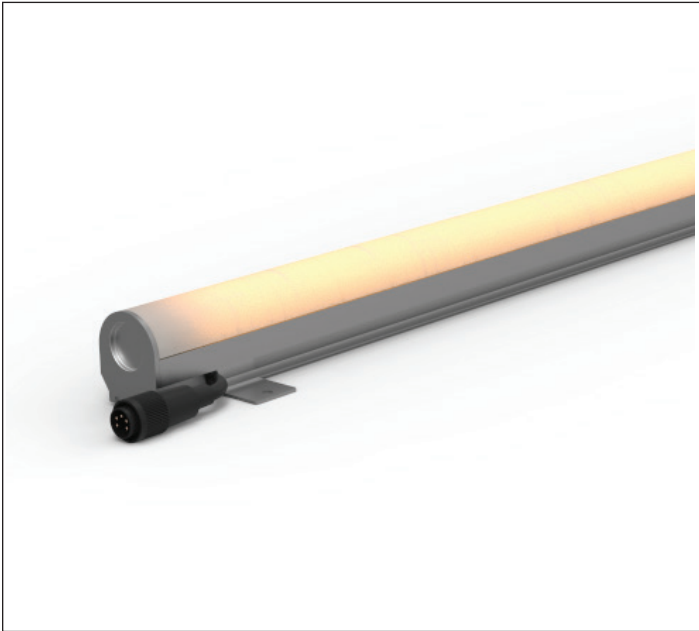


CAT:  FEET:

TYPE:  PROJECT:



Continulum™ Indoor LED rigid cove fixture represents the latest in high-quality linear LED cove lighting from Tivoli Lighting. This simple yet elegant, low-profile luminaire delivers up to 600 lumens per foot of white light at an affordable price. Continulum™ Indoor LED rigid cove fixture is designed to replace traditional cove lighting sources for wall and ceiling glow effects, wall washing, and indirect lighting from a single cove. Multiple color temperatures, power levels, and lengths afford an abundance of design options.

**Features**

- Surface-mounted linkable linear strip fixture
- Tivoli flexible LED PCB engine inside
- Heavy-gauge extruded aluminum
- Lumens ranging from 300 to 600
- Available in manufactured continuous lengths up to 8'
- Off-Set electrical connection system allows for seamless
- 90+ CRI available

**Mounting**

Continulum™ features factory attached pivot mounting brackets.

**Applications**

- Ideal for direct or indirect cove and architectural applications.
- Replace fluorescent lighting with high efficiency LEDs or as a new construction element.
- Use for indoor applications only.

**Warranty**

5 years

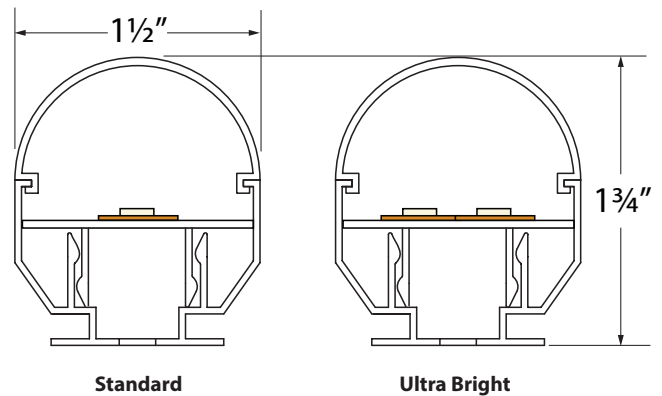
Technical Information



Model	Standard	Ultra Bright
*Lumens/ft	322	643
*Watts/ft	4.4	8.8
*Lumen/Watt	73	
CRI	82	
Kelvin Temp	2400K (± 50K), 2700K (± 50K), 3000K (±75K), 3500K (±100K), 4000K (±100K)	
Rated Life	50,000 hrs.	
Max run length	22'	11'
Ordering Increment	1', 2', 4', 6', 8'	
Operating Voltage	24V DC	
Power Supply	Class 2	
Dimming	Yes	

\*3000K Sample Ultra Bright with clear lens

**Profile Dimensions**





## Recommended Power Supplies

### ADUL - NON DIMMING

DESCRIPTION	CAT NO	APPLICATION	PRIMARY VOLTAGE	SECONDARY VOLTAGE	CIRCUIT BREAKERS	MAX LOAD	CIRCUIT CAPACITY
ADUL Series Class 2 Transformer	ADUL-120-1-4-24-D	Indoor / Damp	100-277V AC 5ø60 HZ	24V DC	1	96W	4A
	ADUL-240-2-4-24-D				2	2x96W	2x4A
	ADUL-320-3-4-24-D				3	3x96W	3x4A

### ADUL - 0-10V DIMMING

DESCRIPTION	CAT NO	APPLICATION	PRIMARY VOLTAGE	SECONDARY VOLTAGE	CIRCUIT BREAKERS	MAX LOAD	CIRCUIT CAPACITY
ADUL Series Class 2 Transformer	ADUL-120-1-4-24-DOT	Indoor / Damp	100-277V AC 5ø60 HZ	24V DC	1	96W	4A
	ADUL-240-2-4-24-DOT				2	2x96W	2x4A
	ADUL-320-3-4-24-DOT				3	3x96W	3x4A

### ADUL - DMX SINGLE ADDRESS

DESCRIPTION	CAT NO	APPLICATION	PRIMARY VOLTAGE	SECONDARY VOLTAGE	CIRCUIT BREAKERS	MAX LOAD	CIRCUIT CAPACITY
ADUL Series Class 2 Transformer	ADUL-120-1-4-24-DIN	Indoor / Damp	100-277V AC 5ø60 Hz	24V DC	1	96W	4A
	ADUL-240-2-4-24-DIN				2	2x96W	2x4A
	ADUL-320-3-4-24-DIN				3	3x96W	3x4A

### ADUL - DMX MULTI ADDRESS

DESCRIPTION	CAT NO	APPLICATION	PRIMARY VOLTAGE	SECONDARY VOLTAGE	CIRCUIT BREAKERS	MAX LOAD	CIRCUIT CAPACITY
ADUL Series Class 2 Transformer	ADUL-240-2-4-24-DIN-2	Indoor / Damp	100-277V AC 5ø60 Hz	24V DC	2	2x96W	2x4A
	ADUL-320-3-4-24-DIN-3				3	3x96W	3x4A

### INFINITY - MLV / ELV / 0-10V / PWM / TRIAC

DESCRIPTION	CAT NO	APPLICATION	PRIMARY VOLTAGE	SECONDARY VOLTAGE	CIRCUIT BREAKERS	MAX LOAD	MIN LOAD	CIRCUIT CAPACITY
Infinity Series Class 2 Transformer	INF-J-30-1-1.3-24	Indoor / Outdoor	100 - 277V AC	24VDC	1	30W	3W	1.3A
	INF-J-60-1-2.5-24				1	60W	6W	2.5A
	INF-J-96-1-4-24				1	96W	9W	4A
	INF-J-192-2-4-24				2	2x96W	2x9W	2x4A
	INF-J-288-3-4-24				3	3x96W	3X9W	3x4A

## Recommended Dimmers

### DIMMING - 0-10V

DESCRIPTION	CAT NO	APPLICATION	INPUT VOLTAGE	OUTPUT VOLTAGE	MAX LOAD
0-10V Dimmer	DIM-LD-010	Indoor	24V DC	24V DC	30 mA max. output (sink only)

### DIMMING - MLV

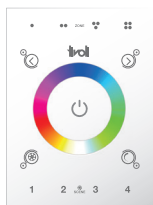
DESCRIPTION	CAT NO	APPLICATION	INPUT VOLTAGE	OUTPUT VOLTAGE	MAX LOAD
MLV Dimmer	N-600	Indoor	120V AC	120V AC	450W
	N-1000				800W
	N-1500				1200W
	D-600				450W
	M-600				450W
	M-1000				800W

### DIMMING - ELV

DESCRIPTION	CAT NO	APPLICATION	INPUT VOLTAGE	OUTPUT VOLTAGE	MAX LOAD
ELV Dimmer	ME-600	Indoor	120V AC	120V AC	450W
	DE-300				300W

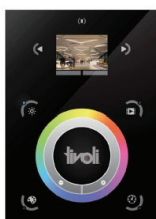
### DIMMING - DMX

DESCRIPTION	CAT NO	APPLICATION	INPUT VOLTAGE	OUTPUT PROTOCOL	MAX UNIVERSE
DMX Controller	TVOQ-1-WH	Indoor	5V DC	DMX 512	1
	TVOQ-2-BK		6V DC		
	TVOQ-2-WH				
	TVOQ-10-BK-7				
	TVOQ-10-WH-7		6-7V DC		2



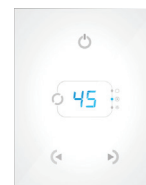
**Touchscreen**

**TVOQ-1-WH**  
WH (White only)



**Touchscreen**

**TVOQ-10-XX-7**  
XX = BK (Black), WH (White)



**Touchscreen**

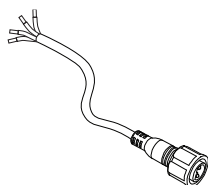
**TVOQ-2-XX**  
XX = BK (Black), WH (White)

## Ordering Information

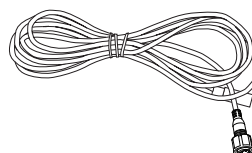
PRODUCT CODE	LED COLOR	LED TYPE	LENS TYPE	LENGTH	END PREP**	VOLTAGE
CTL						24
CTL = Continulum™ Indoor	24 = 2400K 27 = 2700K 30 = 3000K 35 = 3500K 40 = 4000K	S = Standard U = Ultra Bright	C = Clear F = Frosted O = Opal	1 = 1' 2 = 2' 4 = 4' 6 = 6' 8 = 8'	MD = Male/Dead End MF = Male/Female  **Static Lead Wire also required (See below).	24 = 24V DC

## Wiring Accessories

**\*\*Lead Preparation** - Factory attached end preps required. End preps must be indicated at time of ordering.



**\*LEAD WIRE (Required)**  
**CTL-LEAD-I-2-F-01**  
 2 conductor static 1' lead wire.  
 Features 24AWG wire on input end  
 and 2 pin static female connection  
 on other end.  
**CTL-LEAD-I-2-F-16**  
 2 conductor static 16' lead wire.  
 Features 24AWG wire on input end  
 and 2 pin static female connection  
 on other end.



**MALE/FEMALE JUMPERS**  
**CTL-CONN-I-2-01**  
 Connector, Jumper 1' Male/Female  
**CTL-CONN-I-2-16**  
 Connector, Jumper 16' Male/Female