

CAT: FEET:

TYPE: PROJECT:



"MB" Medium based architectural channel is an industry standard. Medium based (E26) sockets are installed into high grade aluminum extruded channel, which provides lightweight rigidity and a solid connection to your structure.

Features

- UL wet weather seal option available
- Optional switch
- Available GFCI or standard dual 3 prong outlet
- Heavy-gauge extruded aluminum
- Available in 6", 12", 18" and 24" OC standard spacing
- Wiring and components are concealed
- Anti-corrosion coated (custom finished on request)
- Polished Aluminum, Satin Aluminum, Powder Coated White or Powder coated black
- Custom radial bends
- Optional 4 channel chase wiring is available
- Pre-wired for quick and easy installation
- 7/8" diameter knockouts on mounting side (custom optional end cap knockouts)

Mounting

Surface-mounted linear strip fixture. Knock-out holes for screws are provided every 24" along mounting face of channel.

Applications

Ideal for marquee, make-up mirror illuminated frames, porte-cochère, borderline, amusement parks, casinos and bridge applications. Use for indoor and outdoor applications.

Warranty

3 years

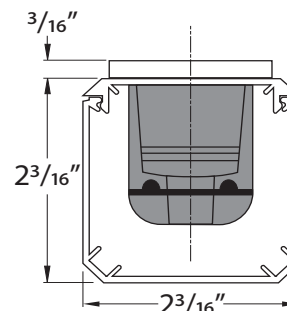


Technical Information

Socket Spacing OC*	6", 12", 18", 24"
Order Increments	1'
Operating Voltage	120V AC/ 240V AC
Material	Aluminum Alloy
Finishes**	Satin or Polished Aluminum, Black or White Powder Coated
Sockets	Medium Base, E26/E27
Lamps (By others)	60W max

*Custom lamp spacing available (consult factory)

**Custom paint or anodizing available (consult factory)



Ordering Information

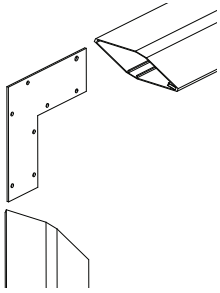
AC Standard Architectural Channel maximum length 12'

PRODUCT CODE	SOCKET TYPE	LAMP SPACING	FINISH	OPTIONAL CHASSING	OPTIONAL** POWER SWITCH	OPTIONAL** PLUG	OPTIONAL WEATHER SEAL
AC	MB						
AC = Standard Architectural Channel	MB = Medium Base Socket Strand	06 = 6" OC 12 = 12" OC 18 = 18" OC 24 = 24" OC	PA = Polished Aluminum* SA = Satin Aluminum BK = Black Powder Coat WH = White Powder Coat	C = 4 Channel Chasing	S = Switch	O1 = Standard dual 3 prong outlet O2 = GFCI dual 3 prong outlet	WS1 = Weather Seal (Required for Outdoor Applications)

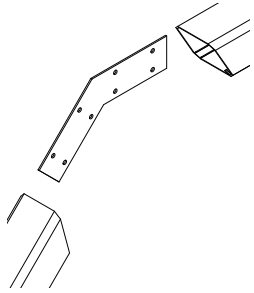
** Indoor Only

* Consult Factory for extended lead time.

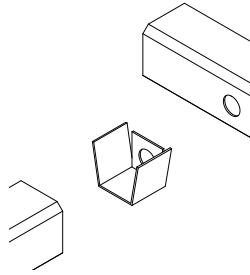
Accessories and Joiners



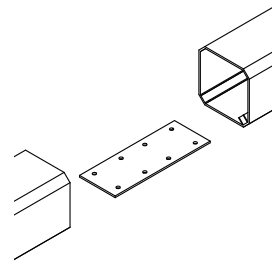
INTERNAL 90° BRACKET
AC-90
Flat 90° (Standard)



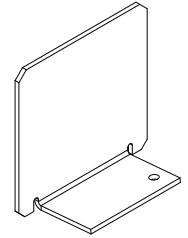
INTERNAL 45° BRACKET
AC-45
45° Bracket (Standard)



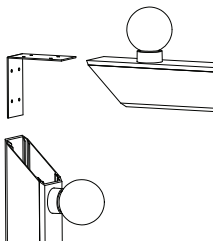
INTERNAL T-BRACKET
AC-T
T Bracket (Standard)



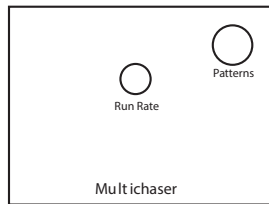
INTERNAL CONNECTOR
AC-180
Internal Connector (Standard)



END CAPS
STANDARD PROFILE
AC-EC-SA
Satin Aluminum
AC-EC-PA
Polished Aluminum
AC-EC-PW
Powder Coated White
AC-EC-PB
Powder Coated Black



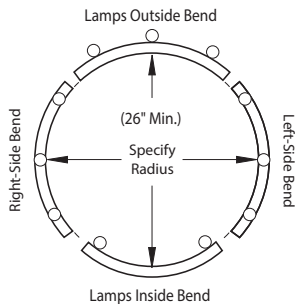
INTERNAL 90° BRACKET
AC-90-OI
90° (Standard Outside/Inside)



CHASE CONTROLLER
CC-120V
120V
4 Channel , 8 Pattern
Chase Controller

Channel Configurations

Factory Radius



RADIUS CHARGES

RADIUS

Radius bend set up charge (Over 3' Radius)

RADIUS-3

Radius bend set up charge (Under 3' Radius)

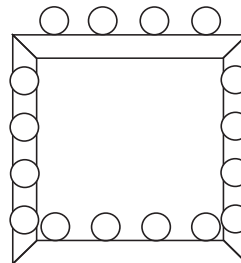
R-UNITS

Radius unit charge, Per 8' Max length

AC-RADIUS

Internal Bracket (Standard Channel)

Factory Miters



NOTE: Dimensional drawings with lamp orientation required.

AC-MITER

Factory Miter Cut
Standard Profile