

CAT: FEET:

TYPE: PROJECT:



"MB" Medium based architectural channel is an industry standard. Medium based (E26) sockets are installed into high grade aluminum extruded channel, which provides lightweight rigidity and a solid connection to your structure.

Features

- UL wet weather seal option available
- Optional switch
- Available GFCI or standard dual 3 prong outlet
- Heavy-gauge extruded aluminum
- Available in 6", 12", 18" and 24" OC standard spacing
- Wiring and components are concealed
- Anti-corrosion coated (custom finished on request)
- Available in: Satin Aluminum, Powder Coated White or Powder coated black
- Custom radial bends
- Optional 4 channel chase wiring is available
- Pre-wired for quick and easy installation
- 7/8" diameter knockouts on mounting side (custom optional end cap knockouts)

Mounting

Surface-mounted linear strip fixture. Knock-out holes for screws are provided every 24" along mounting face of channel.

Applications

Ideal for marquee, make-up mirror illuminated frames, porte-cochère, borderline, amusement parks, casinos and bridge applications. Use for indoor and outdoor applications.

Warranty

3 years

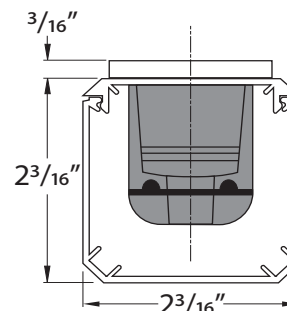


Technical Information

Socket Spacing OC*	6", 12", 18", 24"
Order Increments	1'
Operating Voltage	120V AC/ 240V AC
Material	Aluminum Alloy
Finishes**	Satin Aluminum, Black or White Powder Coated
Sockets	Medium Base, E26/E27
Lamps (By others)	60W max

*Custom lamp spacing available (consult factory)

**Custom paint or anodizing available (consult factory)

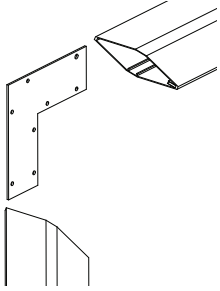


Ordering Information

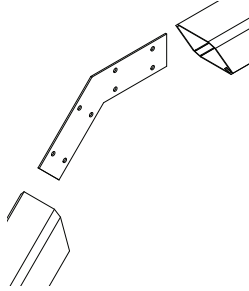
AC Standard Architectural Channel maximum length 12'

PRODUCT CODE	SOCKET TYPE	LAMP SPACING	FINISH	OPTIONAL CHASSING	OPTIONAL WEATHER SEAL
AC	MB				
AC = Standard Architectural Channel	MB = Medium Base Socket Strand	06 = 6" OC 12 = 12" OC 18 = 18" OC 24 = 24" OC	SA = Satin Aluminum BK = Black Powder Coat WH = White Powder Coat	C = 4 Channel Chasing	WS1 = Weather Seal (Required for Outdoor Applications)

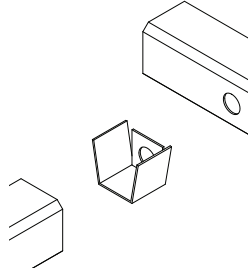
Accessories and Joiners



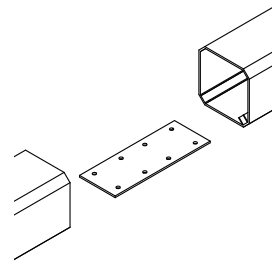
INTERNAL 90° BRACKET
AC-90
Flat 90° (Standard)



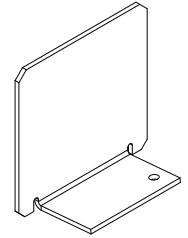
INTERNAL 45° BRACKET
AC-45
45° Bracket (Standard)



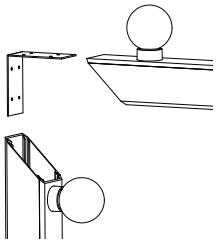
INTERNAL T-BRACKET
AC-T
T Bracket (Standard)



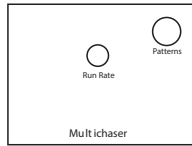
INTERNAL CONNECTOR
AC-180
Internal Connector (Standard)



END CAPS
STANDARD PROFILE
AC-EC-SA
Satin Aluminum
AC-EC-PW
Powder Coated White
AC-EC-PB
Powder Coated Black



INTERNAL 90° BRACKET
AC-90-OI
90° (Standard Outside/Inside)



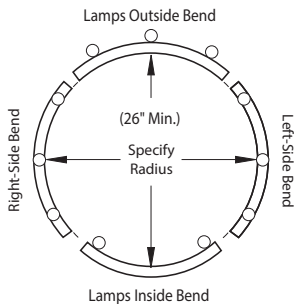
CHASE CONTROLLER
CC-120V
120V
4 Channel , 8 Pattern
Chase Controller

POWER SWITCH
PS-120V
Optional power switch

3 PRONG OUTLET
XX-120V
XX = 01 (Standard dual 3 prong outlet),
02 (GFCI dual 3 prong outlet)

Channel Configurations

Factory Radius



RADIUS CHARGES

RADIUS

Radius bend set up charge (Over 3' Radius)

RADIUS-3

Radius bend set up charge (Under 3' Radius)

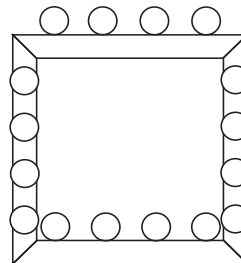
R-UNITS

Radius unit charge, Per 8' Max length

AC-RADIUS

Internal Bracket (Standard Channel)

Factory Miters



NOTE: Dimensional drawings with lamp orientation required.

AC-MITER

Factory Miter Cut
Standard Profile