

WB SERIES | Architectural Channel

CAT:	FEET:
------	-------

TYPE:	PROJECT:
-------	----------



"WB" Wire basket medium based architectural channel is an industry standard. Wire guarded medium based (E26) sockets are installed into high grade aluminum extruded channel, which provides lightweight rigidity and a solid connection to your structure. Wire baskets in the past protected talent from the heat of incandescent lamps. Specify WB – Architectural channel when using medium base lamps for make-up mirror type applications.

Features

- Riveted Wire Guard meets NEC #520.72 standard
- Heavy-gauge extruded aluminum
- Available in 6", 9", 12" and 18" OC standard spacing
- Wiring and components are concealed
- Anti-corrosion coated (Custom Finished on Request)
- Custom radial bends
- 2 3/16" x 2 3/16" Standard Profile extrusion available
- Optional 4 Channel chase wiring is available
- Configurable for freight optimization
- Pre-wired for quick and easy installation
- Knock-out holes for screws are provided every 24"
- 7/8" diameter knockouts on mounting side (custom optional end cap knockouts)

Mounting

Knock-out holes for screws have been provided every 24" along mounting face of channel.

Applications

Ideal for make-up mirror illuminated frames in public space, greenroom, backstage type applications. Use for indoor applications only.

Warranty

5 years



Technical Information

Socket Spacing*	6", 9", 12" and 18" OC
Order Increments	1'
Operating Voltage	120V AC / 240V AC
Material	Aluminum Alloy
Finishes**	Satin Aluminum, Black or White Powder Coated
Sockets	Medium Base E26/E27
Lamps (By others)	100W max

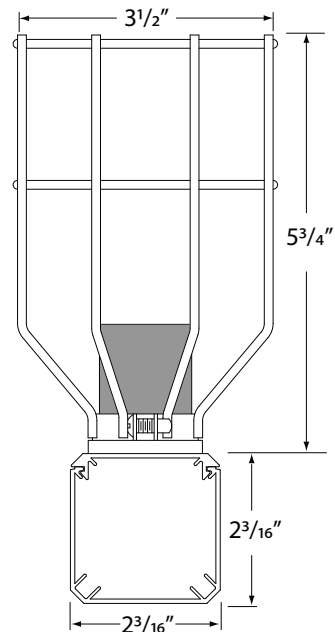
*Custom lamp spacing available (consult factory)

**Custom paint or anodizing available (consult factory)

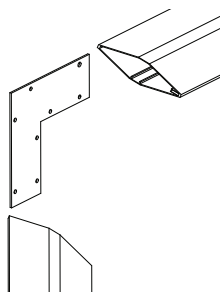
Ordering Information

AC Standard Architectural Channel maximum length 12'

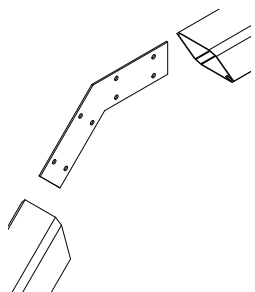
PRODUCT CODE	SOCKET TYPE	LAMP SPACING	FINISH
AC	WB		
AC = Standard Architectural Channel	WB = Wire Guard Base	06 = 6" OC 09 = 9" OC 12 = 12" OC 18 = 18" OC	SA = Satin Aluminum BK = Black Powder Coat WH = White Powder Coat CS = Custom



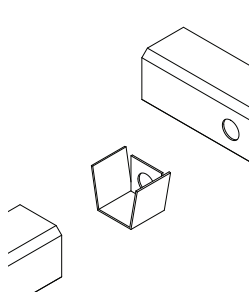
Pattern Accessories and Joiners



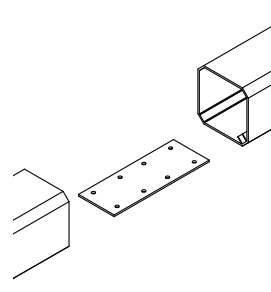
INTERNAL 90° BRACKET
AC-90
Flat 90° (Standard)



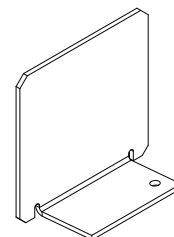
INTERNAL 45° BRACKET
AC-45
45° Bracket (Standard)



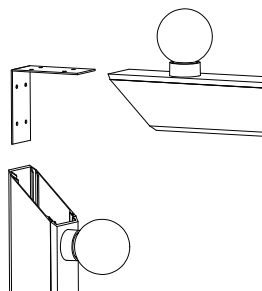
INTERNAL T-BRACKET
AC-T
T Bracket (Standard)



INTERNAL CONNECTOR
AC-180
Internal Connector (Standard)



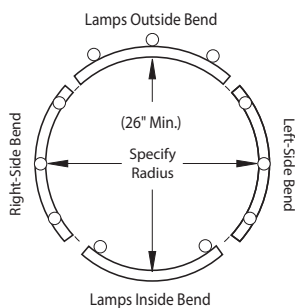
END CAPS
STANDARD PROFILE
AC-EC-SA
Satin Aluminum
AC-EC-PW
Powder Coated White
AC-EC-PB
Powder Coated Black



INTERNAL 90° BRACKET
AC-90-OI
90° (Standard Outside/Inside)

Channel Configurations

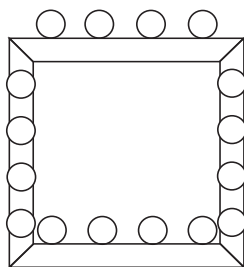
Factory Radius



RADIUS CHARGES

RADIUS
Radius bend set up charge (Over 3' Radius)
RADIUS-3
Radius bend set up charge (Under 3' Radius)
R-UNITS
Radius unit charge, Per 8' Max length
AC-RADIUS
Internal Bracket (Standard Channel)

Factory Miters



NOTE: Dimensional drawings with lamp orientation required.

AC-MITER

Factory Miter Cut
Standard Profile