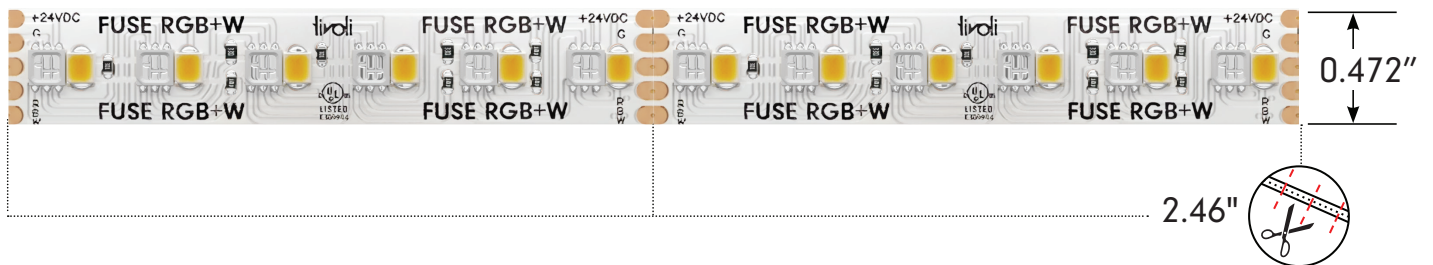


Project: _____ Length: _____

- 4 Channel system
- Protected by Tivoli’s exclusive eXo Shield for ultimate dust and moisture protection
- Dual side-by-side RGB 3-in-1 RGB chip and dedicated white chip
- Multiple mounting options with Tivoli’s Urban channel series.
- Provided with factory applied 3M VHB adhesive tape on the back for quick application
- DMX Controllable and compatible with Tivoli’s own CUEpro software (sold separately)
- Low Voltage (24V DC)
- IP54 rated
- 5 year warranty

Dimensions



Order Guide

PRODUCT CODE	INSTALL	LED TYPE	*MAX RUN	VOLTAGE
TPLFS	I			24
TPLFS = Fuse Tape	I = Indoor	RGB18 = RGB+1800K RGB22 = RGB+2200K RGB24 = RGB+2400K RGB27 = RGB+2700K RGB30 = RGB+3000K RGB35 = RGB+3500K RGB40 = RGB+4000K RGB50 = RGB+5000K	MR = Max Run	24 = 24V DC

* Optional - Leave blank if not needed

Note: A layout/drawing must accompany each order showing run length and location

Note: Runs with LEAD-C are rounded **up** to next cut interval (unless otherwise specified)

Note: Runs with LEAD-D are rounded **down** to next cut interval (unless otherwise specified)

Specification

Output (based on RGB27)

	Red	Green	Blue	RGB	RGB+27
Kelvin Temperature					
Lumens/ft	45.6	119	31.3	193	370
Efficacy (Lm/W)	41	95	28	53	66
CRI	n/a	n/a	n/a	47.4	61.8
Wavelength	628	524	470	n/a	n/a
Measured Power W/ft	1.1	1.2	1.1	3.6	5.3
Listed Power W/ft.	5.3				
Max Run	17'				

n/a = Not Applicable

Electrical

Input Voltage	24V DC
Power Supply	Class 2
Wire Size (End Prep)	20 AWG, 5 wire
Control	DMX

Physical

LED Package	3535 (RGB), 2835 (White)
LEDs/ft	29
Adhesive	3M VHB Tape
Copper Trace	3 Ounces
Dimensions	0.472 (12mm)
Cut Increments	2.46"
Operating Temperature	-40°F (-40°C) to 140°F (60°C)

Certification and Testing

Certification	UL Listed
Lumen Maintenance (L70) Hours	60,000
Environment	IP54, Damp Location, Conformal Coated
Warranty	5 years

Power Leads and Jumpers (Installed by Tivoli's certified solderers)



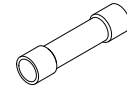
TPL-I-LEAD-5-C
LEAD/END
24" standard 5 conductor
22AWG lead wire factory
attached to one end of tape



TPL-I-LEAD-5-D
LEAD/LEAD
24" standard 5 conductor
22AWG lead wire factory
attached to both ends of tape

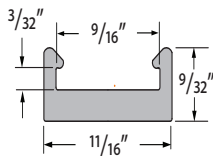


TPL-I-XEP-5
EXTRA LEAD WIRE
Additional factory attached
22AWG lead 5 wire to extend
lengths of LEAD-C and LEAD-D
up to 20 ft. max
Sold per foot

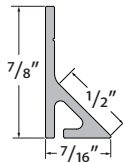


TPL-I-CONN
18-22AWG BUTT CONNECTORS
Used to interconnect factory
attached lead wires.
Sold individually.

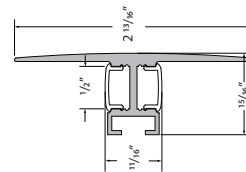
Compatible Extrusions



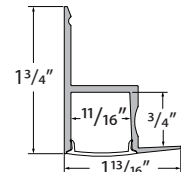
MCHAN-8-LP
Low profile NO LENS OPTION
clear polycarbonate, length 8'



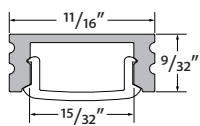
TPL-I-45-MCH-8-S
White PVC, 45° NO LENS
length 8'



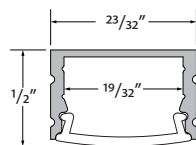
DWAR-CHAN-SLV-6.5
Anodized Aluminum Extrusion,
available in 6.5' lengths



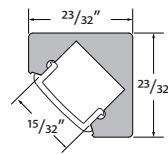
EDGE-CHAN-SLV-6.5
Anodized Aluminum Extrusion,
available in 6.5' lengths



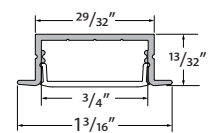
MINI-CHAN-SLV-6.5
Anodized Aluminum Extrusion,
available in 6.5' lengths



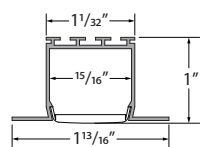
MOFT-CHAN-SLV-6.5
Anodized Aluminum Extrusion,
available in 6.5' lengths



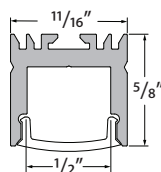
DYER-CHAN-SLV-6.5
Anodized Aluminum Extrusion,
available in 6.5' lengths



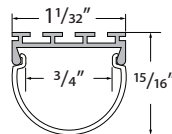
WRNR-CHAN-SLV-6.5
Anodized Aluminum Extrusion,
available in 6.5' lengths



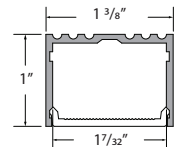
NOYS-CHAN-SLV-6.5
Anodized Aluminum Extrusion,
available in 6.5' lengths



VALN-CHAN-SLV-6.5
Anodized Aluminum Extrusion,
available in 6.5' lengths

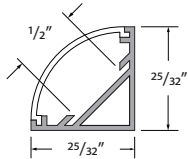


DOME-CHAN-SLV-6.5
Anodized Aluminum Extrusion,
available in 6.5' lengths

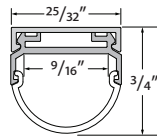


ALTN-CHAN-SLV-6.5
Anodized Aluminum Extrusion,
available in 6.5' lengths

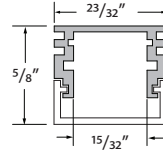
Compatible Extrusions



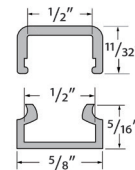
MRSL-CHAN-SLV-6.5
Anodized aluminum extrusion available in 6.5' length



HRIZ-CHAN-SLV-6.5
Anodized aluminum extrusion available in 6.5' length

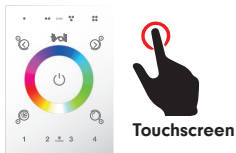


ASTR-CHAN-SLV-6.5
Anodized aluminum extrusion available in 6.5' length

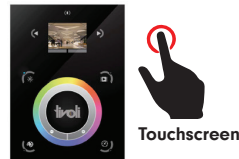


INF-X-CHAN-8
X = C (clear), F (frosted)
PC extrusion, available in 8' lengths

In-Wall Controls



TVOQ-1-WH
White



TVOQ-10-XX-7
XX = BK (Black), WH (White)



TVOQ-2-BK
Black

Power Supplies

ADUL - DMX SINGLE ADDRESS

DESCRIPTION	CAT NO	APPLICATION	PRIMARY VOLTAGE	SECONDARY VOLTAGE	CIRCUIT BREAKERS	MAX LOAD	CIRCUIT CAPACITY
ADUL Series Class 2 Transformer	ADUL-120-1-4-24-DIN	Indoor / Outdoor	100-277V AC 50/60 Hz	24V DC	1	96W	4A
	ADUL-240-2-4-24-DIN				2	2x96W	2x4A
	ADUL-320-3-4-24-DIN				3	3x96W	3x4A

ADUL - DMX MULTI ADDRESS

DESCRIPTION	CAT NO	APPLICATION	PRIMARY VOLTAGE	SECONDARY VOLTAGE	CIRCUIT BREAKERS	MAX LOAD	CIRCUIT CAPACITY
ADUL Series Class 2 Transformer	ADUL-240-2-4-24-DIN-2	Indoor / Outdoor	100-277V AC 50/60 Hz	24V DC	2	2x96W	2x4A
	ADUL-320-3-4-24-DIN-3				3	3x96W	3x4A

ADNM - DMX/DALI FLICKER-FREE FOR TV STUDIO

DESCRIPTION	CAT NO	APPLICATION	PRIMARY VOLTAGE	SECONDARY VOLTAGE	CIRCUIT BREAKERS	MAX LOAD	CIRCUIT CAPACITY
ADNM Series Class 2 Transformer	ADNM-120-1-4-24-DTV	Indoor / Outdoor	100-277V AC 50/60 HZ	24V DC	1	1x96W	1x4A
	ADNM-240-2-4-24-DTV				2	2x96W	2x4A
	ADNM-320-3-4-24-DTV				3	3x96W	3x4A

Accessories



DMX-SPLT-8
DMX Splitter
8 ports of DMX 512, RJ45 and 3-pin
Hardwire Connection

Software



Cue™ and CuePro™ softwares are specifically designed for the TivoCUE™ in-wall DMX controls and includes an array of tools required by the latest DMX lighting fixtures. Intuitive, with easy-to-use effects that can be dropped into timelines, and multi-zone synchronization capabilities allow you to program a project effortlessly.

Note: If the number of DMX sub-controllers exceed 32 units, a DMX Splitter is required.

Tivoli, LLC. reserves the right to modify this specification without prior notice.