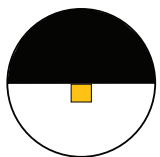
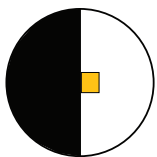


# REGULOR



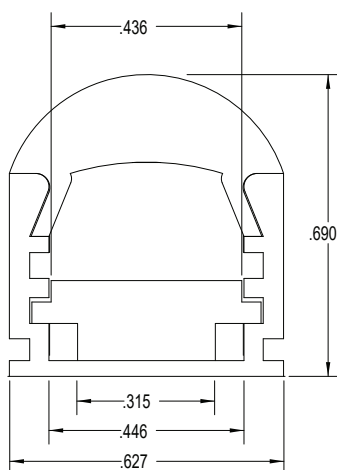
Ceiling



Wall



## PROFILE DIMENSIONS



## AVAILABLE TIVOTAPE™ OPTIONS

**SB**   
3 W/ft

**HO**   
4.4 W/ft

**LB**   
1.4 W/ft

**RGBmini**   
4.4 W/ft

**RGBW**   
5.3 W/ft



2200K



2400K



2700K



3000K



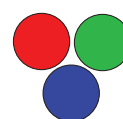
3500K



4000K



5000K



## ORDERING INFORMATION



**RGLR-CHAN-6.5**  
Anodized aluminum channel  
with adjustable beam angle  
10°, 30°, 60°, 90°

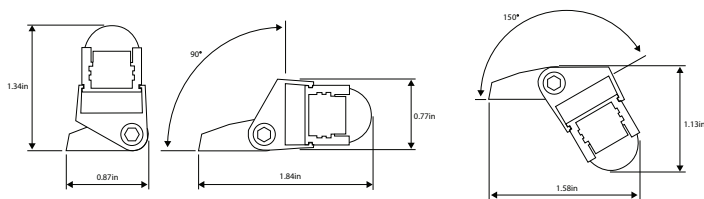


**S-LNS-LF-6.5**  
Clear lens

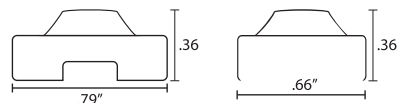


**RGLR-EC-01**  
End-cap (without hole)  
**RGLR-EC-02**  
End-cap (with hole)

## MOUNTING ACCESSORIES



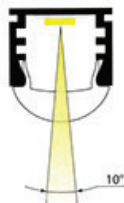
**RGLR-ADJ-MTBK**  
Adjustable Mounting bracket  
Polycarbonate UV Stabilized



**MTBK-01**  
Mounting Bracket Zinc  
**MTBK-02**  
Mounting Bracket Chrome



## AVAILABLE BEAM ANGLE



Option 1: 10° Beam Angle  
This option does not use the included insert.

Step 1: Cut Tivotape™ at recommended cut point, if necessary, to fit channel.

Step 2: Peel off backing tape and apply Tivotape™ directly to the inside surface of Regular Channel.



Option 2: 30° and 60° Beam Angle .

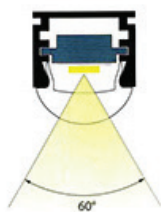
Step 1: Position the Channel Insert with the shallow side up.

Step 2: Make sure insert surface where Tivotape is to be applied is clean, free of all dirt, oil and debris.

Step 3: Peel backing tape from bottom side of Tivotape™ and attach to shallow surface of insert.

Step 4: Slide insert into channel as shown.

Use lower slot in Channel to achieve a 30° beam angle and use the upper slot for a 60° beam angle.



Option 3: 90° Beam Angle.

Step 1: Position the Channel Insert with the deep side up.

Step 2: Make sure surface of insert where Tivotape is to be applied is clean, free of all dirt, oil and debris.

Step 3: Peel backing tape from bottom side of Tivotape™ and attach to deep surface of insert.

Step 4: Slide insert into upper slot of channel as shown.

