

tivoli



FlexileLG  
SYSTEM



Project: \_\_\_\_\_ Type: \_\_\_\_\_

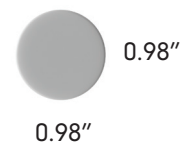
## Product Features

- Compare to traditional neon 360° lighted surface illuminates uniformly without any shadowing
- High luminous efficiency with LM80 report
- Easily bend to any shape with superior flexibility
- UV Stabilized with food-grade environmental silicone housing (no yellowing or cracking)
- Resistance to saline solutions, acids, alkali, and corrosive gases
- Low Voltage 24V DC

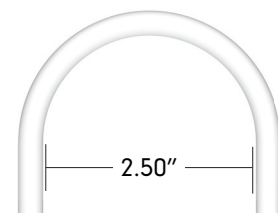
## Dimensions



Front Power Lead



Side Power Lead



## Order Specification Guide - Flexile Light Engine Only

PRODUCT CODE	PROFILE	POWER LEAD DIRECTION	LED COLOR	LENGTH	VOLTAGE
<b>FLX</b>	<b>LG</b>				<b>24</b>
<b>FLX</b> = Flexile 360° Light	<b>LG</b> = Large	<b>F</b> = Front <b>S</b> = Side	<b>23</b> = 2300K <b>27</b> = 2700K <b>30</b> = 3000K <b>35</b> = 3500K <b>40</b> = 4000K	<b>024</b> = 2' <b>048</b> = 4' <b>096</b> = 8' <b>195</b> = 16.25'	<b>24</b> = 24V DC

For custom cut lengths consult factory for lead time and MOQ

## Extra Lead Prep

### FLX-XEP

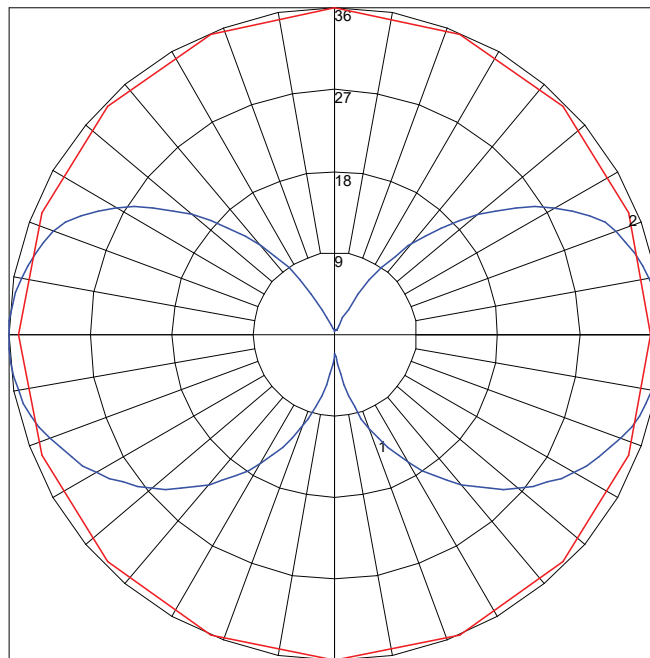
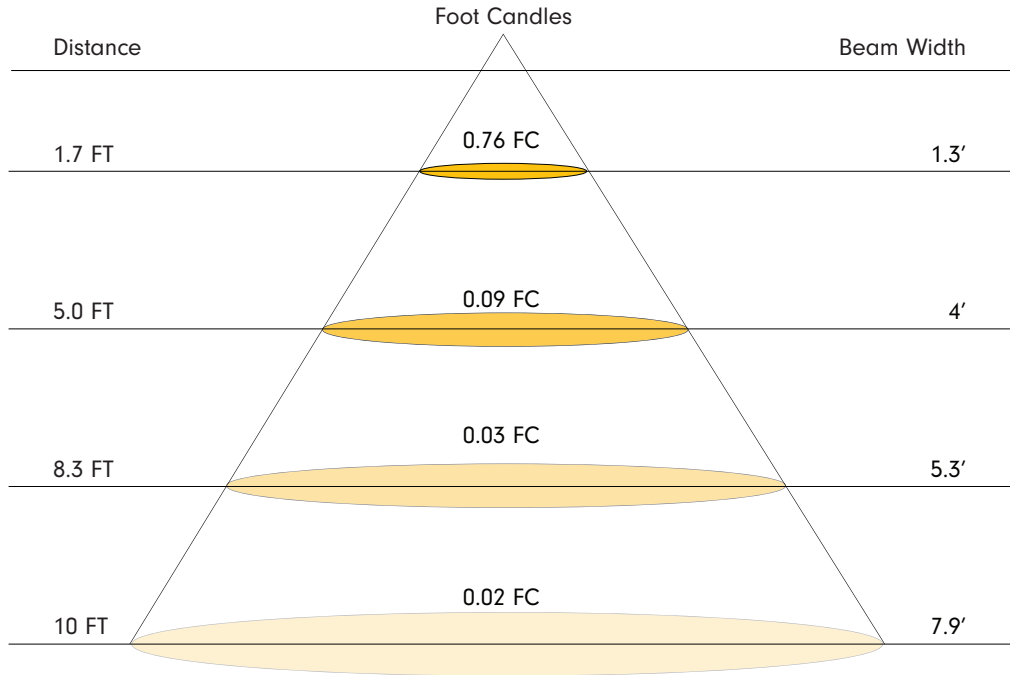
Extra lead wire for extended length.  
Sold per ft.

## Specifications

LED Intensity	2300K	2700K	3000K	3500K	4000K
Lumens (lm/ft)	300	325	333	N/A	345
Beam Angle	360°				
Efficacy (lm/W)	66.6	72.4	74	N/A	76.6
CRI	95	95	95	95	95
<b>Electrical</b>					
Dimming	TRIAC, ELV, MLV, 0-10V, DMX				
Input Voltage	24V DC				
Power Consumption (W/ft)	4.5				
Maximum Electrical Run	20'				
Maximum Mechanical Run	16.5'				
<b>Physical</b>					
Dimensions (DIA) Flexile	0.98"				
Cut Increments	1"				
Bend Radius	2.50"				
Material (Flexile)	Flame, UV, Solvent, Saltwater Resistant Silicone				
Storage Temperature	-0°C / -32°F ~ 60°C / 140°F				
Working Temperature	-20°C / -68°F ~ 55°C / 131°F				
<b>Certification and Testing</b>					
Certification	cULus, CE, RoHS, IK08				
Environment	Dry Location				
Rated Hours (TM80)	70000 hrs.				
Warranty	3 Years				

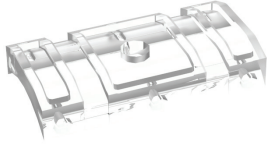
Photometrics

Note: Data is based on 3000K



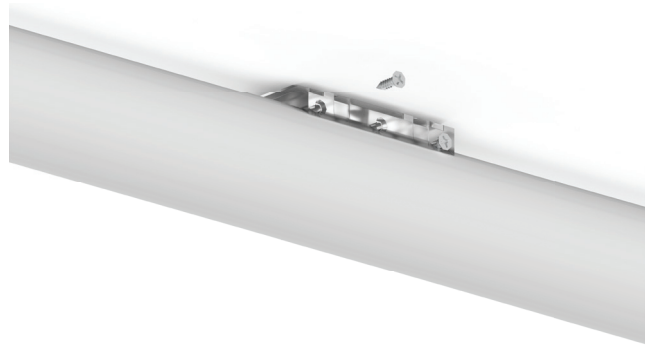
Maximum Candela = 35.8 Located At Horizontal Angle = 90, Vertical Angle = 87.5  
 # 1 - Vertical Plane Through Horizontal Angles (90 - 270) (Through Max. Cd.)  
 # 2 - Horizontal Cone Through Vertical Angle (87.5) (Through Max. Cd.)

### Mounting Options



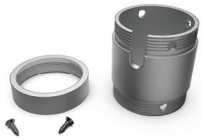
#### FLX-LG-MTBK-LP

Clear low-profile polycarbonate surface mounting bracket  
Includes: (2) brackets, (14) nails, and (5) zip ties



#### FLX-LG-MTBK-SEMICIRCLE

Natural aluminum metal surface mounting bracket  
Includes: (2) bracket sets, (2) set screws and hardware



#### FLX-LG-JOINR-CIR

Natural aluminum metal joiner  
Includes: (1) bracket and hardware



#### FLX-LG-CL-JOINR

Clear polycarbonate joiner  
Includes (1) bracket and hardware



#### FLX-LG-TEL-MTBK-1

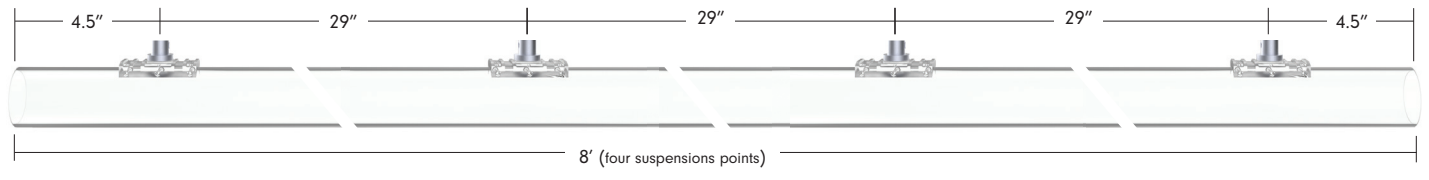
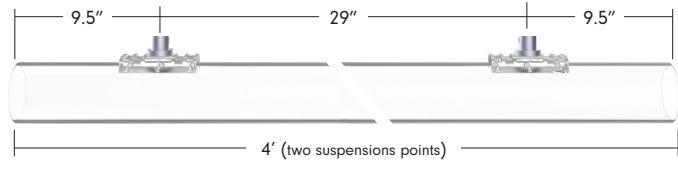
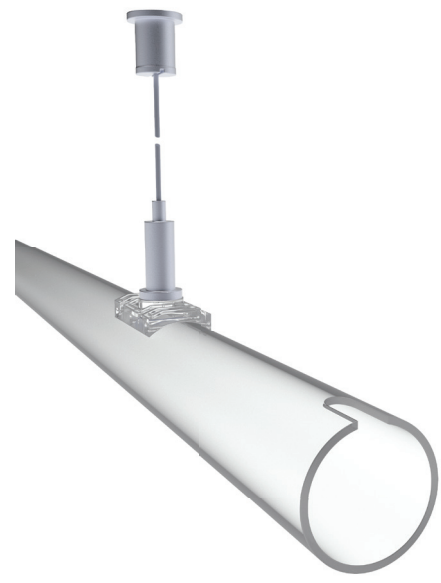
Telescoping bracket with clear tube clip. Bracket extends to maximum length of 24" and a minimum of 13". Achievable Flexile bend radius of 15" with a recommended on-center spacing of 15" of each bracket. Includes: (1) extension bracket and hardware



**Mounting Options**

**FLX-LG-H-X-PNDT**

X = 4 (46"), 8 (96")  
 Horizontal clear polycarbonate tube includes two 72" cables and hardware for 4', and four 72" cables and hardware for 8'



**FLX-LG-SUS-MTBK-1**

72" suspension cable with mounting hardware. Includes a 1.5" clear polycarbonate tube for uninterrupted 360 light distribution.

**Mounting Options & Accessories**



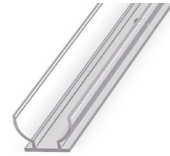
**FLX-LG-CL-CLIP**  
PC clip closed 1"  
Mount spacing 15"  
sold each



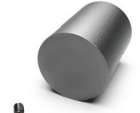
**FLX-LG-CL-CHAN**  
PC channel closed 6.5'  
Bend diameter 2.5"  
sold each



**FLX-LG-OP-CLIP**  
PC clip open 2.36"  
Mount spacing 15"  
\*sold each



**FLX-LG-OP-CHAN**  
PC channel open 6.5'  
\*sold each



**FLX-LG-EC**  
Metal End Cap  
Natural aluminum finish  
sold each

\*Not for horizontal overhead application



## Power Supplies - Indoor & Outdoor Cont.

### INFINITY - MLV / ELV / 0-10V / PWM / TRIAC DIMMING

DESCRIPTION	CAT NO	APPLICATION	PRIMARY VOLTAGE	SECONDARY VOLTAGE	CIRCUIT BREAKERS	MIN LOAD	MAX LOAD	CIRCUIT CAPACITY
Infinity Series Class 2 Transformer	INF-J-30-1-1.3-24	Indoor / Outdoor	100 - 277V AC	24V DC	1	3W	30W	1.3A
	INF-J-60-1-2.5-24				1	6W	60W	2.5A
	INF-J-96-1-4-24				1	9W	96W	4A
	INF-J-192-2-4-24				2	2x9W	2x96W	2x4A
	INF-J-288-3-4-24				3	3X9W	3x96W	3x4A

## Power Supplies - Indoor Only

### ADUL - NON DIMMING

DESCRIPTION	CAT NO	APPLICATION	PRIMARY VOLTAGE	SECONDARY VOLTAGE	CIRCUIT BREAKERS	MAX LOAD	CIRCUIT CAPACITY
ADUL Series Class 2 Transformer	ADUL-120-1-4-24-D	Indoor / Damp	100-277V AC 50/60 HZ	24V DC	1	96W	4A
	ADUL-240-2-4-24-D				2	2x96W	2x4A
	ADUL-320-3-4-24-D				3	3x96W	3x4A

### ADUL - 0-10V DIMMING

DESCRIPTION	CAT NO	APPLICATION	PRIMARY VOLTAGE	SECONDARY VOLTAGE	CIRCUIT BREAKERS	MAX LOAD	CIRCUIT CAPACITY
ADUL Series Class 2 Transformer	ADUL-120-1-4-24-DOT	Indoor / Damp	100-277V AC 50/60 HZ	24V DC	1	96W	4A
	ADUL-240-2-4-24-DOT				2	2x96W	2x4A
	ADUL-320-3-4-24-DOT				3	3x96W	3x4A

### ADUL - DMX SUB CONTROLLER (Single Address)

DESCRIPTION	CAT NO	APPLICATION	PRIMARY VOLTAGE	SECONDARY VOLTAGE	CIRCUIT BREAKERS	MAX LOAD	CIRCUIT CAPACITY
ADUL Series Class 2 Transformer	ADUL-120-1-4-24-DIN	Indoor / Damp	100-277V AC 50/60 Hz	24V DC	1	96W	4A
	ADUL-240-2-4-24-DIN				2	2x96W	2x4A
	ADUL-320-3-4-24-DIN				3	3x96W	3x4A

### ADUL - DMX SUB CONTROLLER (Multi Address)

DESCRIPTION	CAT NO	APPLICATION	PRIMARY VOLTAGE	SECONDARY VOLTAGE	CIRCUIT BREAKERS	MAX LOAD	CIRCUIT CAPACITY
ADUL Series Class 2 Transformer	ADUL-240-2-4-24-DIN-2	Indoor / Damp	100-277V AC 50/60 Hz	24V DC	2	2x96W	2x4A
	ADUL-320-3-4-24-DIN-3				3	3x96W	3x4A