



Flexile**LG**  
SYSTEM



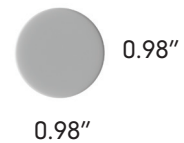
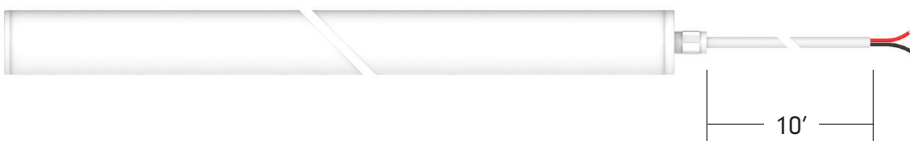
Project: \_\_\_\_\_ Type: \_\_\_\_\_

- Compare to traditional neon 360° lighted surface illuminates uniformly without any shadowing
- High luminous efficiency with LM80 report
- Easily bend to any shape with superior flexibility
- UV Stabilized with food-grade environmental silicone housing (no yellowing or cracking)
- Resistance to saline solutions, acids, alkali, and corrosive gases
- Low Voltage 24V DC

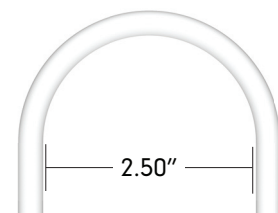
Dimensions



Front Power Lead



Side Power Lead





## Order Specification Guide - Flexile Light Engine Only

PRODUCT CODE	PROFILE	POWER LEAD DIRECTION	LED COLOR	LENGTH	VOLTAGE
<b>FLX</b> FLX = Flexile 360° Light	<b>LG</b> LG = Large	<b>F</b> = Front <b>S</b> = Side	<b>23</b> = 2300K <b>27</b> = 2700K <b>30</b> = 3000K <b>35</b> = 3500K <b>40</b> = 4000K  <b>RD</b> = Red <b>GR</b> = Green <b>BL</b> = Blue <b>AM</b> = Amber	<b>024</b> = 2' (24") <b>048</b> = 4' (48") <b>096</b> = 8' (96") <b>195</b> = 16.25' (195")  <b>024</b> = 2' (23") <b>048</b> = 4' (48") <b>096</b> = 8' (96") <b>195</b> = 16.25' (194")	<b>24</b> 24 = 24V DC

For custom cut lengths consult factory for lead time and MOQ

## Extra Lead Prep

### FLX-XEP

Extra lead wire for extended length.  
Sold per ft.

## Specifications

LED CCT	2300K	2700K	3000K	3500K	4000K
Lumens (lm/ft)	300	325	333	N/A	345
Efficacy (lm/W)	66.6	72.4	74	N/A	76.6
CRI	95				
Power Consumption (W/ft)	4.5				
Maximum Electrical Run	20'				
Maximum Mechanical Run	16.25'				
Cut Increments	1"				

LED Color	Red	Green	Blue	Amber
Lumens (lm/ft)	CF	CF	CF	CF
Efficacy (lm/W)	N/A	N/A	N/A	N/A
Power Consumption (W/ft)	4.5			
Maximum Electrical Run	20'			
Maximum Mechanical Run	16.25'			
Cut Increments	1.64"			

### Electrical

Dimming	TRIAC, ELV, MLV, 0-10V, DMX
Input Voltage	24V DC

### Physical

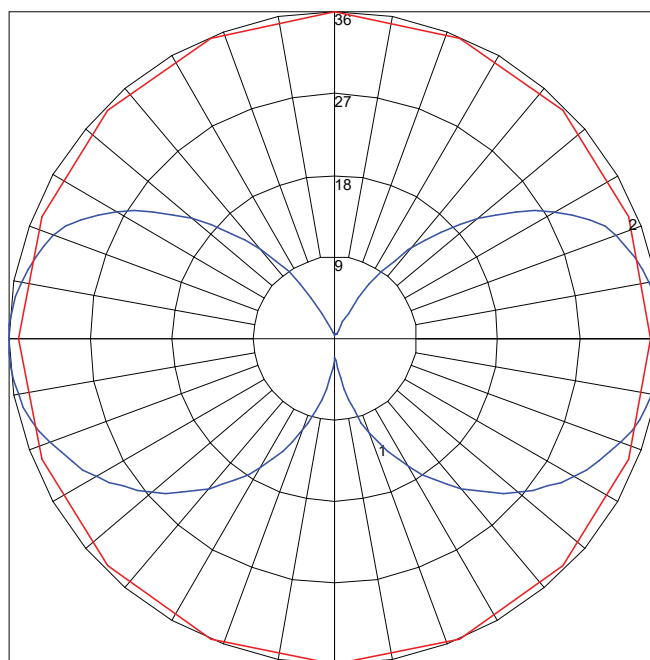
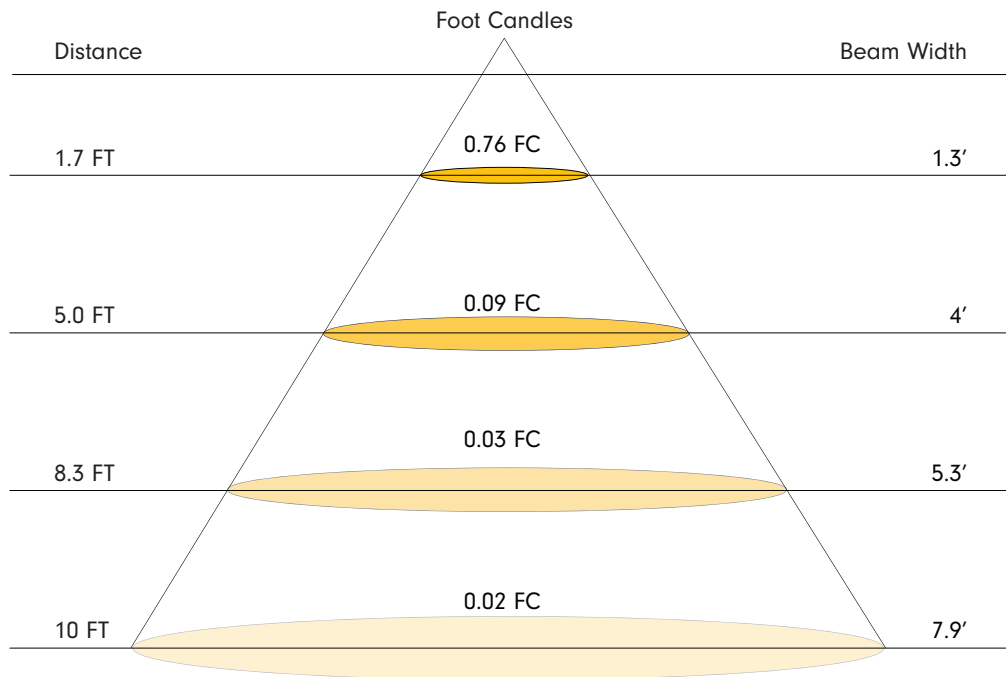
Beam Angle	360°
Dimensions (DIA) Flexile	0.98"
Bend Diameter	2.50"
Material (Flexile)	Flame, UV, Solvent, Saltwater Resistant Silicone
Storage Temperature	-0°C / -32°F ~ 60°C / 140°F
Working Temperature	-20°C / -68°F ~ 55°C / 131°F

### Certification and Testing

Certification	cULus, CE, RoHS, IK08
Environment	Dry Location
Rated Hours (TM80)	70000 hrs.
Warranty	3 Years

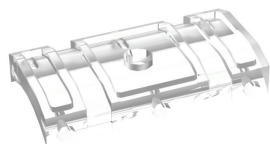
Photometrics

Note: Data is based on 3000K



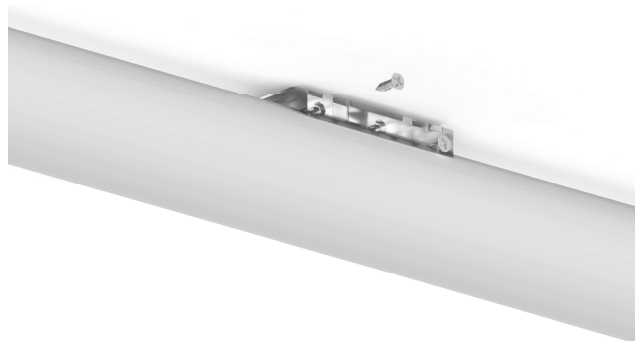
Maximum Candela = 35.8 Located At Horizontal Angle = 90, Vertical Angle = 87.5  
 # 1 - Vertical Plane Through Horizontal Angles (90 - 270) (Through Max. Cd.)  
 # 2 - Horizontal Cone Through Vertical Angle (87.5) (Through Max. Cd.)

Mounting Options



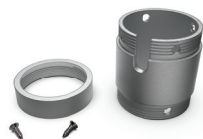
**FLX-LG-MTBK-LP**

Clear low-profile polycarbonate surface mounting bracket  
Includes: (2) brackets, (14) nails, and (5) zip ties



**FLX-LG-MTBK-SEMICIRCLE**

Natural aluminum metal surface mounting bracket  
Includes: (2) bracket sets, (2) set screws and hardware



**FLX-LG-JOINR-CIR**

Natural aluminum metal joiner  
Includes: (1) bracket and hardware



**FLX-LG-CL-JOINR**

Clear polycarbonate joiner  
Includes (1) bracket and hardware



**FLX-LG-PUK-3-XX-XX**

**XX = 4.5 (4.5"), 6.0 (5.9"), 7.0 (6.9")**  
**XX = BK (black), WH (white)**  
twist-to-close feature fits LG Flexile with multiple diameters. 3 ring entry points and 2 power feed holes



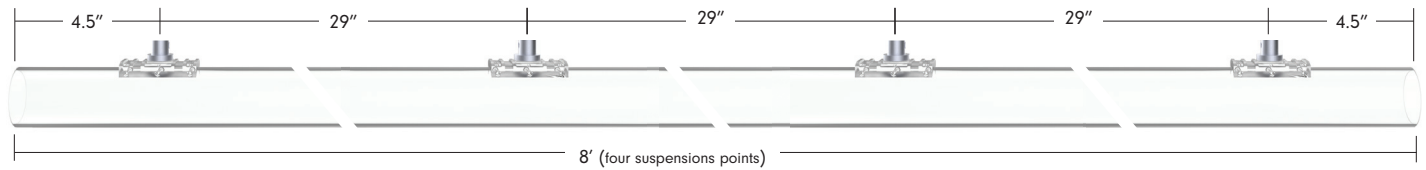
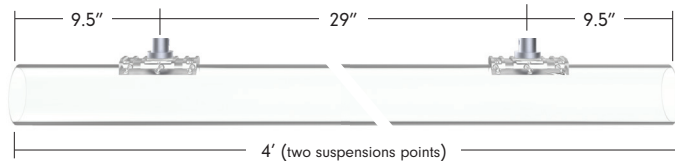
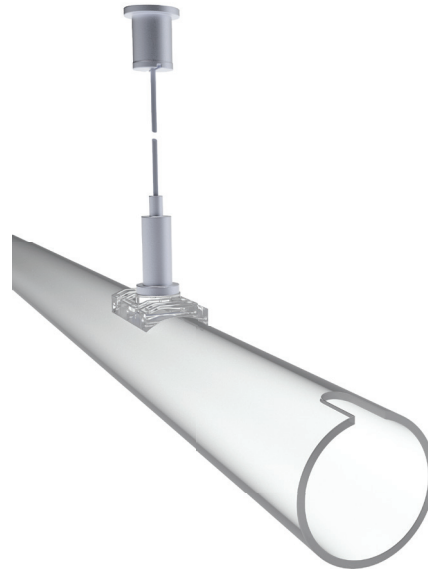
**FLX-LG-NODE-X-XX**

**X = 1 (1 stack), 2 (2 stack)**  
**XX = BK (black), WH (white)**  
twist-to-close feature fits LG Flexile, with 1 power feed hole

Mounting Options

**FLX-LG-H-X-PNDT**

X = 4 (46"), 8 (96")  
 Horizontal clear polycarbonate tube includes two 72" cables and hardware for 4', and four 72" cables and hardware for 8'



**FLX-LG-SUS-MTBK-1**  
 72" suspension cable with mounting hardware. Includes a 1.5" clear polycarbonate tube for uninterrupted 360 light distribution.



**FLX-LG-TEL-MTBK-1**  
 Telescoping bracket with clear tube clip. Bracket extends to maximum length of 24" and a minimum of 13". Achievable Flexile bend radius of 15" with a recommended on-center spacing of 15" of each bracket. Includes: (1) extension bracket and hardware

### Mounting Options & Accessories



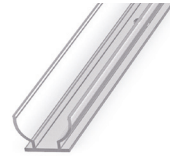
**FLX-LG-CL-CLIP**  
PC clip closed 1"  
Mount spacing 15"  
sold each



**FLX-LG-CL-CHAN**  
PC channel closed 6.5'  
sold each



**FLX-LG-OP-CLIP**  
PC clip open 2.36"  
Mount spacing 15"  
\*sold each



**FLX-LG-OP-CHAN**  
PC channel open 6.5'  
\*sold each



**FLX-LG-EC**  
Metal End Cap  
Natural aluminum finish  
sold each

\*Not for horizontal overhead application



Power Supplies - Indoor & Outdoor Cont.

**INFINITY - MLV / ELV / 0-10V / PWM / TRIAC DIMMING**

DESCRIPTION	CAT NO	APPLICATION	PRIMARY VOLTAGE	SECONDARY VOLTAGE	CIRCUIT BREAKERS	MIN LOAD	MAX LOAD	CIRCUIT CAPACITY
Infinity Series Class 2 Transformer	INF-J-30-1-1.3-24	Indoor / Outdoor	100 - 277V AC	24V DC	1	3W	30W	1.3A
	INF-J-60-1-2.5-24				1	6W	60W	2.5A
	INF-J-96-1-4-24				1	9W	96W	4A
	INF-J-192-2-4-24				2	2x9W	2x96W	2x4A
	INF-J-288-3-4-24				3	3x9W	3x96W	3x4A

Power Supplies - Indoor Only

**ADUL - NON DIMMING**

DESCRIPTION	CAT NO	APPLICATION	PRIMARY VOLTAGE	SECONDARY VOLTAGE	CIRCUIT BREAKERS	MAX LOAD	CIRCUIT CAPACITY
ADUL Series Class 2 Transformer	ADUL-120-1-4-24-D	Indoor / Damp	100-277V AC 50/60 HZ	24V DC	1	96W	4A
	ADUL-240-2-4-24-D				2	2x96W	2x4A
	ADUL-320-3-4-24-D				3	3x96W	3x4A

**ADUL - 0-10V DIMMING**

DESCRIPTION	CAT NO	APPLICATION	PRIMARY VOLTAGE	SECONDARY VOLTAGE	CIRCUIT BREAKERS	MAX LOAD	CIRCUIT CAPACITY
ADUL Series Class 2 Transformer	ADUL-120-1-4-24-DOT	Indoor / Damp	100-277V AC 50/60 HZ	24V DC	1	96W	4A
	ADUL-240-2-4-24-DOT				2	2x96W	2x4A
	ADUL-320-3-4-24-DOT				3	3x96W	3x4A

**ADUL - DMX SUB CONTROLLER (Single Address)**

DESCRIPTION	CAT NO	APPLICATION	PRIMARY VOLTAGE	SECONDARY VOLTAGE	CIRCUIT BREAKERS	MAX LOAD	CIRCUIT CAPACITY
ADUL Series Class 2 Transformer	ADUL-120-1-4-24-DIN	Indoor / Damp	100-277V AC 50/60 Hz	24V DC	1	96W	4A
	ADUL-240-2-4-24-DIN				2	2x96W	2x4A
	ADUL-320-3-4-24-DIN				3	3x96W	3x4A

**ADUL - DMX SUB CONTROLLER (Multi Address)**

DESCRIPTION	CAT NO	APPLICATION	PRIMARY VOLTAGE	SECONDARY VOLTAGE	CIRCUIT BREAKERS	MAX LOAD	CIRCUIT CAPACITY
ADUL Series Class 2 Transformer	ADUL-240-2-4-24-DIN-2	Indoor / Damp	100-277V AC 50/60 Hz	24V DC	2	2x96W	2x4A
	ADUL-320-3-4-24-DIN-3				3	3x96W	3x4A