

tivoli



FlexileLG
SYSTEM



Project: _____ Type: _____

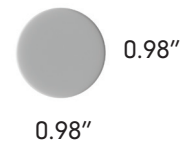
Product Features

- Compare to traditional neon 360° lighted surface illuminates uniformly without any shadowing
- High luminous efficiency with LM80 report
- Easily bend to any shape with superior flexibility
- UV Stabilized with food-grade environmental silicone housing (no yellowing or cracking)
- Resistance to saline solutions, acids, alkali, and corrosive gases
- Low Voltage 24V DC

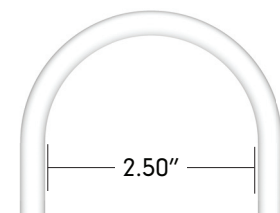
Dimensions



Front Power Lead



Side Power Lead



Order Specification Guide - Flexile Light Engine Only

PRODUCT CODE	PROFILE	POWER LEAD DIRECTION	LED COLOR	LENGTH	VOLTAGE
FLX	LG				24
FLX = Flexile 360° Light	LG = Large	F = Front S = Side	23 = 2300K 27 = 2700K 30 = 3000K 35 = 3500K 40 = 4000K	024 = 2' 048 = 4' 096 = 8' 195 = 16.25'	24 = 24V DC

For custom cut lengths consult factory for lead time and MOQ

Extra Lead Prep

FLX-XEP

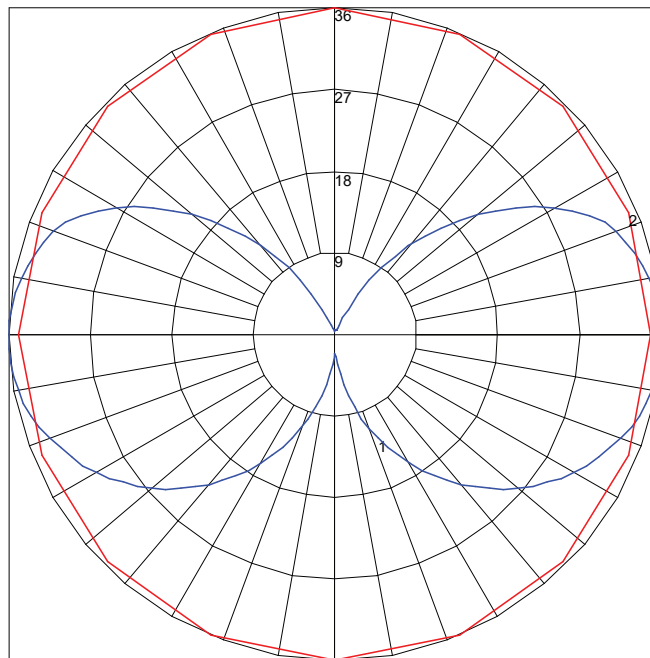
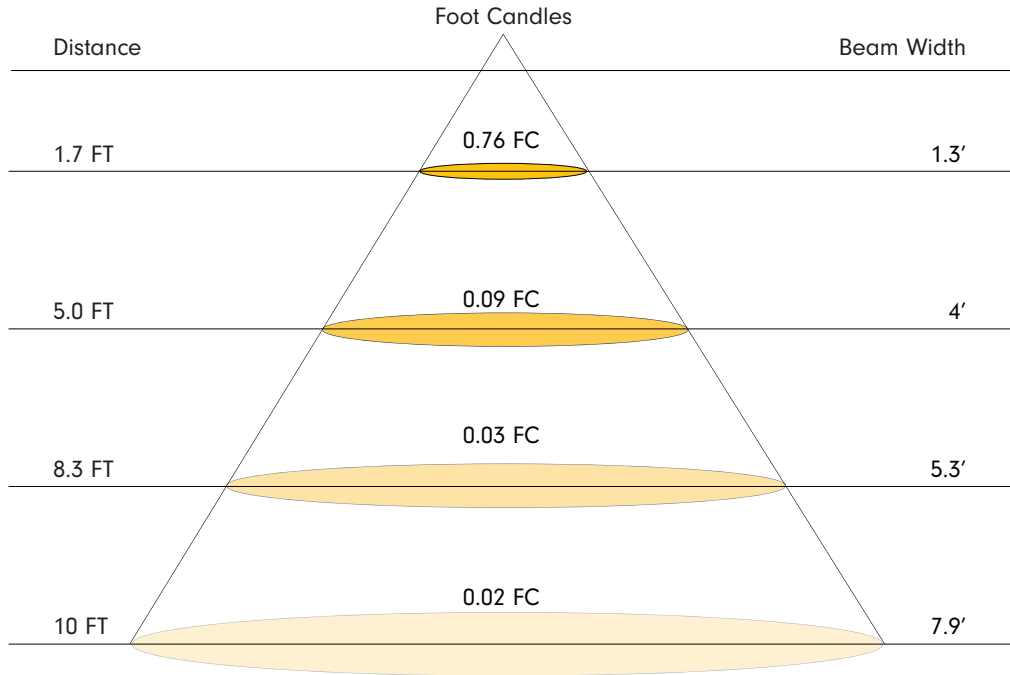
Extra lead wire for extended length.
Sold per ft.

Specifications

LED Intensity	2300K	2700K	3000K	3500K	4000K
Lumens (lm/ft)	300	325	333	N/A	345
Beam Angle	360°				
Efficacy (lm/W)	66.6	72.4	74	N/A	76.6
CRI	95	95	95	95	95
Electrical					
Dimming	TRIAC, ELV, MLV, 0-10V, DMX				
Input Voltage	24V DC				
Power Consumption (W/ft)	4.5				
Maximum Electrical Run	20'				
Maximum Mechanical Run	16.25'				
Physical					
Dimensions (DIA) Flexile	0.98"				
Cut Increments	1"				
Bend Radius	2.50"				
Material (Flexile)	Flame, UV, Solvent, Saltwater Resistant Silicone				
Storage Temperature	-0°C / -32°F ~ 60°C / 140°F				
Working Temperature	-20°C / -68°F ~ 55°C / 131°F				
Certification and Testing					
Certification	cULus, CE, RoHS, IK08				
Environment	Dry Location				
Rated Hours (TM80)	70000 hrs.				
Warranty	3 Years				

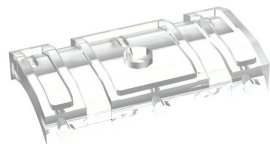
Photometrics

Note: Data is based on 3000K



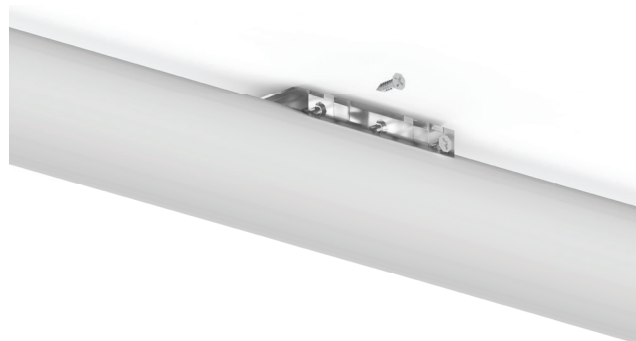
Maximum Candela = 35.8 Located At Horizontal Angle = 90, Vertical Angle = 87.5
 # 1 - Vertical Plane Through Horizontal Angles (90 - 270) (Through Max. Cd.)
 # 2 - Horizontal Cone Through Vertical Angle (87.5) (Through Max. Cd.)

Mounting Options



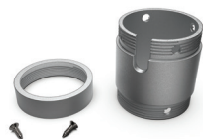
FLX-LG-MTBK-LP

Clear low-profile polycarbonate surface mounting bracket
Includes: (2) brackets, (14) nails, and (5) zip ties



FLX-LG-MTBK-SEMICIRCLE

Natural aluminum metal surface mounting bracket
Includes: (2) bracket sets, (2) set screws and hardware



FLX-LG-JOINR-CIR

Natural aluminum metal joiner
Includes: (1) bracket and hardware



FLX-LG-CL-JOINR

Clear polycarbonate joiner
Includes (1) bracket and hardware



FLX-LG-PUK-3-XX-XX

XX = 4.5 (4.5"), 6.0 (5.9"), 7.0 (6.9")
XX = BK (black), WH (white)
3 ring, black or white color, twist-to-close feature
fits LG Flexile with multiple diameters. 3 ring
entry points and 2 power feed holes



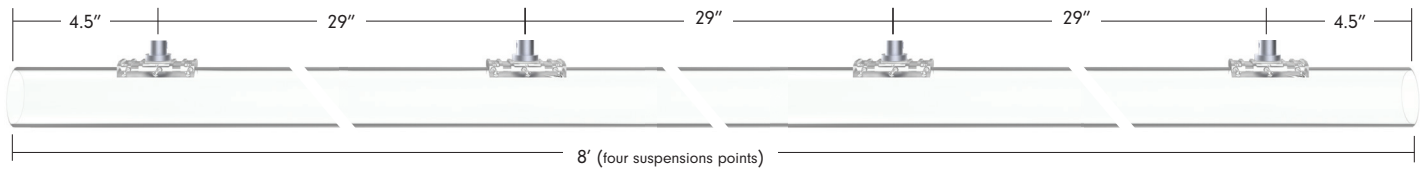
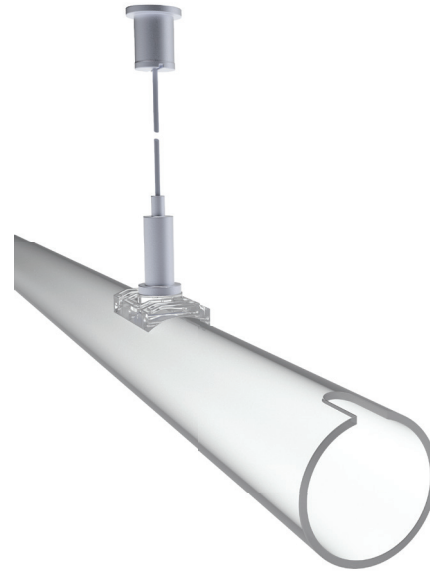
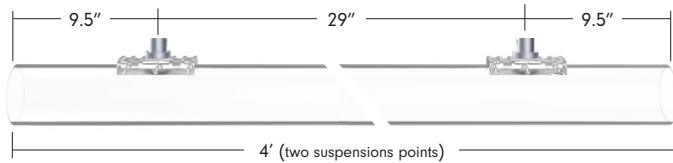
FLX-LG-NODE-X-XX

X = 1 (1 stack), 2 (2 stack)
XX = BK (black), WH (white)
1 or 2 stack, black or white color, twist-to-
close feature fits LG Flexile, with 1 power
feed hole

Mounting Options

FLX-LG-H-X-PNDT

X = 4 (46"), 8 (96")
 Horizontal clear polycarbonate tube includes two 72" cables and hardware for 4', and four 72" cables and hardware for 8'



FLX-LG-SUS-MTBK-1

72" suspension cable with mounting hardware. Includes a 1.5" clear polycarbonate tube for uninterrupted 360 light distribution.



FLX-LG-TEL-MTBK-1

Telescoping bracket with clear tube clip. Bracket extends to maximum length of 24" and a minimum of 13". Achievable Flexile bend radius of 15" with a recommended on-center spacing of 15" of each bracket. Includes: (1) extension bracket and hardware

Mounting Options & Accessories



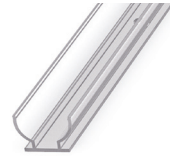
FLX-LG-CL-CLIP
 PC clip closed 1"
 Mount spacing 15"
 sold each



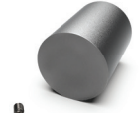
FLX-LG-CL-CHAN
 PC channel closed 6.5'
 Bend diameter 2.5"
 sold each



FLX-LG-OP-CLIP
 PC clip open 2.36"
 Mount spacing 15"
 *sold each



FLX-LG-OP-CHAN
 PC channel open 6.5'
 *sold each



FLX-LG-EC
 Metal End Cap
 Natural aluminum finish
 sold each

*Not for horizontal overhead application



Power Supplies - Indoor & Outdoor Cont.

INFINITY - MLV / ELV / 0-10V / PWM / TRIAC DIMMING

DESCRIPTION	CAT NO	APPLICATION	PRIMARY VOLTAGE	SECONDARY VOLTAGE	CIRCUIT BREAKERS	MIN LOAD	MAX LOAD	CIRCUIT CAPACITY
Infinity Series Class 2 Transformer	INF-J-30-1-1.3-24	Indoor / Outdoor	100 - 277V AC	24V DC	1	3W	30W	1.3A
	INF-J-60-1-2.5-24				1	6W	60W	2.5A
	INF-J-96-1-4-24				1	9W	96W	4A
	INF-J-192-2-4-24				2	2x9W	2x96W	2x4A
	INF-J-288-3-4-24				3	3X9W	3x96W	3x4A

Power Supplies - Indoor Only

ADUL - NON DIMMING

DESCRIPTION	CAT NO	APPLICATION	PRIMARY VOLTAGE	SECONDARY VOLTAGE	CIRCUIT BREAKERS	MAX LOAD	CIRCUIT CAPACITY
ADUL Series Class 2 Transformer	ADUL-120-1-4-24-D	Indoor / Damp	100-277V AC 50/60 HZ	24V DC	1	96W	4A
	ADUL-240-2-4-24-D				2	2x96W	2x4A
	ADUL-320-3-4-24-D				3	3x96W	3x4A

ADUL - 0-10V DIMMING

DESCRIPTION	CAT NO	APPLICATION	PRIMARY VOLTAGE	SECONDARY VOLTAGE	CIRCUIT BREAKERS	MAX LOAD	CIRCUIT CAPACITY
ADUL Series Class 2 Transformer	ADUL-120-1-4-24-DOT	Indoor / Damp	100-277V AC 50/60 HZ	24V DC	1	96W	4A
	ADUL-240-2-4-24-DOT				2	2x96W	2x4A
	ADUL-320-3-4-24-DOT				3	3x96W	3x4A

ADUL - DMX SUB CONTROLLER (Single Address)

DESCRIPTION	CAT NO	APPLICATION	PRIMARY VOLTAGE	SECONDARY VOLTAGE	CIRCUIT BREAKERS	MAX LOAD	CIRCUIT CAPACITY
ADUL Series Class 2 Transformer	ADUL-120-1-4-24-DIN	Indoor / Damp	100-277V AC 50/60 Hz	24V DC	1	96W	4A
	ADUL-240-2-4-24-DIN				2	2x96W	2x4A
	ADUL-320-3-4-24-DIN				3	3x96W	3x4A

ADUL - DMX SUB CONTROLLER (Multi Address)

DESCRIPTION	CAT NO	APPLICATION	PRIMARY VOLTAGE	SECONDARY VOLTAGE	CIRCUIT BREAKERS	MAX LOAD	CIRCUIT CAPACITY
ADUL Series Class 2 Transformer	ADUL-240-2-4-24-DIN-2	Indoor / Damp	100-277V AC 50/60 Hz	24V DC	2	2x96W	2x4A
	ADUL-320-3-4-24-DIN-3				3	3x96W	3x4A