

# LITESPHERE 2.0



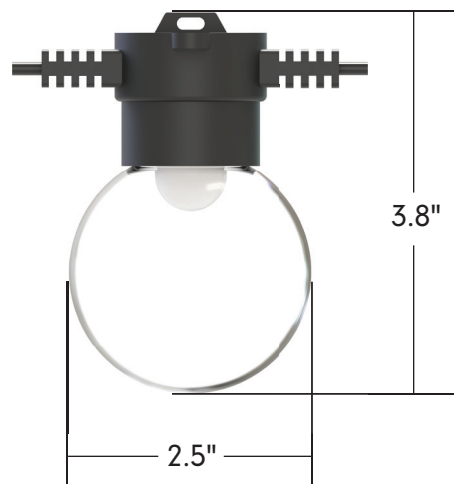
tivoli®



Project: \_\_\_\_\_ TYPE: \_\_\_\_\_

- Tivoli's next evolution of Litesphere delivers a robust specification-grade strand with factory molded standard spacing for consistent quality from start to finish
- Shatterproof PE globe
- Litesphere 2.0 design provides optional suspended mounting or a twist-off cap for surface applications
- Available DarkSky option with added light shade
- 12V DC Low voltage system for long runs
- IP67
- cULus
- 5 Year warranty

Dimensions





### Strand Order Guide - Standard Globes

**Note:** For suspension application, a catenary cable is required for proper installation. Please contact Tivoli for recommendations on unique mounting applications.

Product	Wire	Spacing	LED Type	LED Color	Globe	Voltage
<b>LSL2</b> Litesphere 2.0	<b>B</b> Black <b>W</b> White**	<b>06</b> 6" OC <b>12</b> 12" OC <b>18</b> 18" OC <b>24</b> 24" OC <b>36</b> 36" OC <b>48</b> 48" OC	<b>V</b> Very High Output <b>H</b> High Output <b>S</b> Standard Output	<b>19</b> 1900K <b>27</b> 2700K <b>30</b> 3000K <b>35</b> 3500K <b>40</b> 4000K <b>50</b> 5000K* <b>AM</b> Amber* <b>RB</b> Royal Blue* <b>RD</b> Red* <b>GN</b> Green* <b>YL</b> Yellow* <b>TS</b> Turtle Safe*	<b>C</b> Clear <b>F</b> Frosted <b>O</b> Opal <b>ANGPET</b> Angela <b>KATPET</b> Katie <b>GINPET</b> Gina	<b>12</b> 12V DC

\*Available in VHO LED only

\*\*For wire color white, CCT color RB and TS, contact Factory for MOQ and lead time

### Strand Order Guide - Color Globes

**Note:** For suspension application, a catenary cable is required for proper installation. Please contact Tivoli for recommendations on unique mounting applications.

Product	Wire	Spacing	LED Type	LED Color	Globe	Voltage
<b>LSL2</b> Litesphere 2.0	<b>B</b> Black <b>W</b> White**	<b>06</b> 6" OC <b>12</b> 12" OC <b>18</b> 18" OC <b>24</b> 24" OC <b>36</b> 36" OC <b>48</b> 48" OC	<b>V</b> Very High Output <b>H</b> High Output <b>S</b> Standard Output	<b>35</b> 3500K*	<b>R</b> Red <b>N</b> Orange <b>Y</b> Yellow <b>G</b> Green <b>B</b> Blue <b>P</b> Purple <b>Z</b> Varried Colors	<b>12</b> 12V DC

\*3500K CCT is recommended for best color result when choosing colored globe

\*\*For wire color white contact Factory for MOQ and lead time

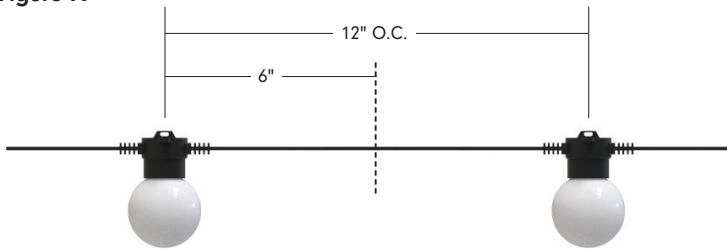
**Power Lead Order Guide**

Figure A - All Litesphere 2.0 are evenly cut between globes according to specified spacing.  
 Figure B - Power leads are added to the end cut, extending the total length of the power lead.

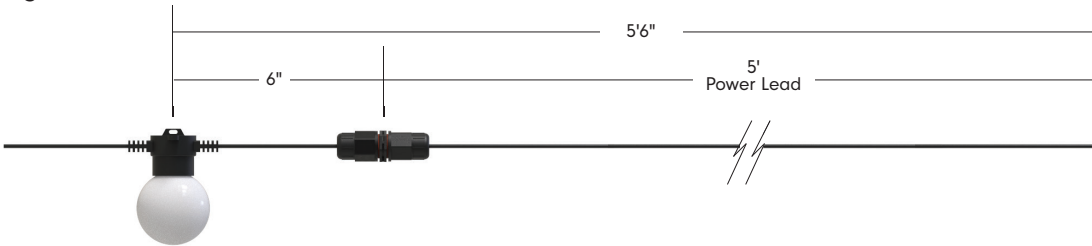
**LSL2-XEP-X-XX**

X = B (Black), W (White)  
 XX = 05 (5'), 10 (10'), 15 (15'), 20 (20'), 25 (25')  
 For custom length consult factory

**Figure A**



**Figure B**

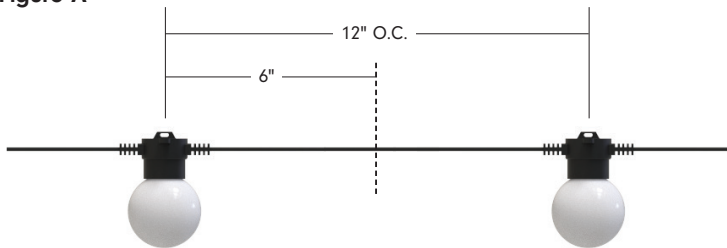


**Jumper Order Guide**

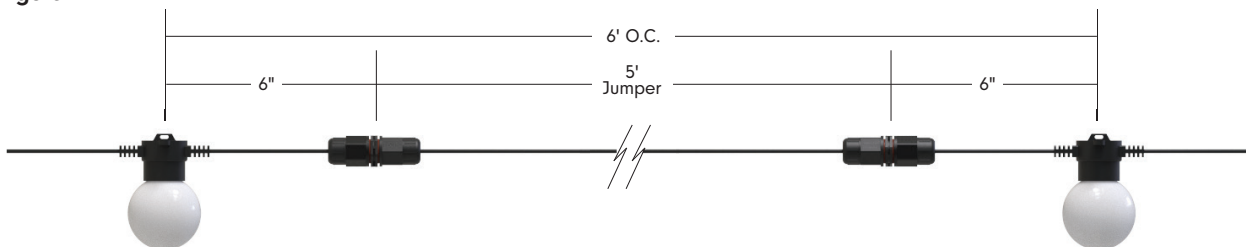
**LSL2-JUMPER-X-XX**

X = B (Black), W (White)  
 XX = 05 (5'), 10 (10')  
 For custom length, consult factory

**Figure A**



**Figure B**



## Output

S - Standard Output						
Spacing	6"	12"	18"	24"	36"	48"
Max Run	130'	180'	230'	250'	275'	275'
Watts/ft	0.32	0.16	0.10	0.08	0.05	0.04
CRI	82.9					

H - High Output						
Spacing	6"	12"	18"	24"	36"	48"
Max Run	80'	110'	130'	150'	175'	200'
Watts/ft	0.74	0.37	0.24	0.18	0.12	0.09
CRI	82					

V - Very High Output						
Spacing	6"	12"	18"	24"	36"	48"
Max Run	30'	55'	70'	80'	90'	100'
Watts/ft	1.62	0.84	0.56	0.42	0.28	0.21
CRI	82.2					

## Delivered Lumen

### Opal Globe

S - Standard Output (3000K)						
Spacing	6"	12"	18"	24"	36"	48"
Lumens/ft	8.2	4.1	2.7	2.05	1.3	1.0

H - High Output (3000K)						
Spacing	6"	12"	18"	24"	36"	48"
Lumens/ft	20.5	10.7	6.8	5.3	3.4	2.6

V - Very High Output (3000K)						
Spacing	6"	12"	18"	24"	36"	48"
Lumens/ft	123.8	61.9	41.2	30.9	20.6	15.4

### Clear Globe

S - Standard Output (3000K)						
Spacing	6"	12"	18"	24"	36"	48"
Lumens/ft	10.0	5.0	3.3	2.5	1.6	1.25

H - High Output (3000K)						
Spacing	6"	12"	18"	24"	36"	48"
Lumens/ft	26.2	13.1	8.7	6.5	4.3	3.2

V - Very High Output (3000K)						
Spacing	6"	12"	18"	24"	36"	48"
Lumens/ft	150.6	75.3	50.2	37.6	25.1	18.8

### Frosted Globe

S - Standard Output (3000K)						
Spacing	6"	12"	18"	24"	36"	48"
Lumens/ft	9.6	4.8	3.2	2.4	1.6	1.2

H - High Output (3000K)						
Spacing	6"	12"	18"	24"	36"	48"
Lumens/ft	25	12.5	8.3	6.25	4.16	3.12

V - Very High Output (3000K)						
Spacing	6"	12"	18"	24"	36"	48"
Lumens/ft	144.0	72.0	48.0	36.0	24.0	18.0

### Angela Globe

S - Standard Output						
Spacing	6"	12"	18"	24"	36"	48"
Lumens/ft	CF	CF	CF	CF	CF	CF

H - High Output						
Spacing	6"	12"	18"	24"	36"	48"
Lumens/ft	CF	CF	CF	CF	CF	CF

V - Very High Output (3500K)						
Spacing	6"	12"	18"	24"	36"	48"
Lumens/ft	149.6	74.8	49.8	37.4	24.9	18.7

### Katie Globe

S - Standard Output						
Spacing	6"	12"	18"	24"	36"	48"
Lumens/ft	CF	CF	CF	CF	CF	CF

H - High Output						
Spacing	6"	12"	18"	24"	36"	48"
Lumens/ft	CF	CF	CF	CF	CF	CF

V - Very High Output (3500K)						
Spacing	6"	12"	18"	24"	36"	48"
Lumens/ft	138.8	69.4	46.2	34.7	23.1	17.3

### Gina Globe

S - Standard Output						
Spacing	6"	12"	18"	24"	36"	48"
Lumens/ft	CF	CF	CF	CF	CF	CF

H - High Output						
Spacing	6"	12"	18"	24"	36"	48"
Lumens/ft	CF	CF	CF	CF	CF	CF

V - Very High Output (3500K)						
Spacing	6"	12"	18"	24"	36"	48"
Lumens/ft	154.6	77.3	51.5	38.6	25.7	19.3

## Specifications

Electrical	
Input Voltage	12V DC
Physical	
Dimensions	2.5"W x 3.8"H
Socket Housing	PVC
American Wire Gauge	14 AWG
Globe	PET (Shatterproof)
Mounting	Surface Mount, Suspended
Operating Temperature	-20°C to 50°C (-4°F to 122°F)
Storage Temperature	-40°C to 65°C (-40°F to 149°F)
Certification and Testing	
Certification	cULus
Environment	Wet Location
L70	70,000
IP Rating	IP67
Warranty	5 Years

Control	
Control System	0-10V, ELV, MLV, DMX 512 (Dim to 1% with an Infinity power supply and a 0-10V Lutron Diva dimmer)

Weights (Spacing)	6"	12"	18"	24"	36"	48"
lb/ft w/strand	0.33	0.28	0.24	0.20	0.17	0.13
lb/ft w/strand-cable	0.35	0.30	0.26	0.22	0.19	0.15

EPA (Spacing)	6"	12"	18"	24"	36"	48"
2.5" Globe	0.10	0.06	0.05	0.04	CF	CF
Hat 8"	N/A	0.53	0.37	0.28	CF	CF
Hat 13"	N/A	N/A	0.93	0.71	CF	CF
Dish 10"	N/A	0.82	0.55	0.42	CF	CF
Flower 10"	N/A	0.82	0.55	0.42	CF	CF
Flower 13"	N/A	N/A	0.93	0.71	CF	CF

## Photometrics

Note: Based on 3000K

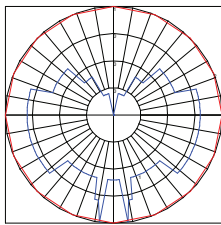
### Standard Brightness

### High Output

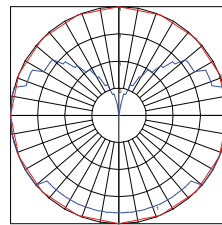
### Very High Output

#### Opal Globe

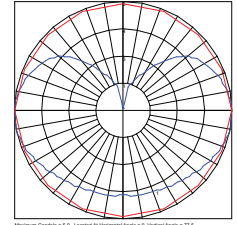
PHOTOMETRIC AND ELECTRICAL MEASUREMENTS - DISTRIBUTION METHOD (20°C ±1°) [1]



PHOTOMETRIC AND ELECTRICAL MEASUREMENTS - DISTRIBUTION METHOD (20°C ±1°) [1]

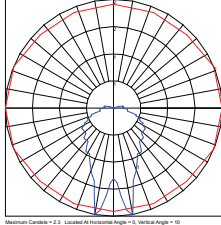


PHOTOMETRIC AND ELECTRICAL MEASUREMENTS - DISTRIBUTION METHOD (20°C ±1°) [1]

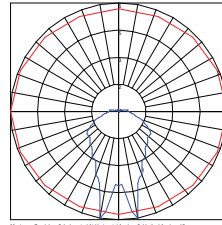


#### Clear Globe

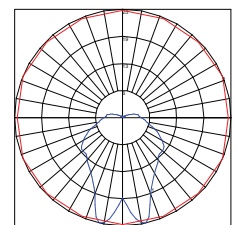
PHOTOMETRIC AND ELECTRICAL MEASUREMENTS - DISTRIBUTION METHOD (20°C ±1°) [1]



PHOTOMETRIC AND ELECTRICAL MEASUREMENTS - DISTRIBUTION METHOD (20°C ±1°) [1]

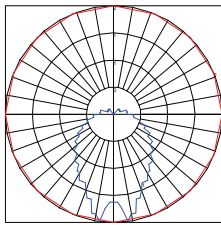


PHOTOMETRIC AND ELECTRICAL MEASUREMENTS - DISTRIBUTION METHOD (20°C ±1°) [1]

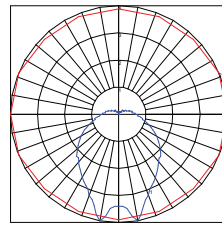


#### Frosted Globe

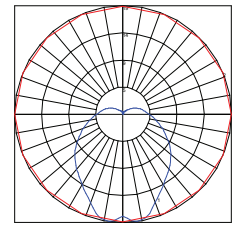
PHOTOMETRIC AND ELECTRICAL MEASUREMENTS - DISTRIBUTION METHOD (20°C ±1°) [1]



PHOTOMETRIC AND ELECTRICAL MEASUREMENTS - DISTRIBUTION METHOD (20°C ±1°) [1]



PHOTOMETRIC AND ELECTRICAL MEASUREMENTS - DISTRIBUTION METHOD (20°C ±1°) [1]



## Mounting Options

### SURFACE/FLUSH

For surface mount applications, remove the top suspension-plate by turning counter-clockwise until off. Place socket flush against the desired surface and mount using proper screws according to substrate.



### SUSPENDED

Suspended mounting will use a combination of LS-Cable, LS-Locks with LS-UVZP. Tension the cable wire with our LS-TT (Tension Tool) for desired sag (Please adhere to local city code for suspended application).

**Note:** For suspension application, a catenary cable is required for proper installation. Please contact Tivoli for recommendations on unique mounting applications.



## Mounting Accessories

**Warning:** For suspension application, catenary cable is required to support the product, otherwise the warranty will be void.



### LS-CABLE-X

**X = 60 (60'), 110 (110'), 500 (500')**  
1/8" Galvanized cable includes (2) cable locks for use with loads up to 200lbs  
Note: 500' no locks included



### LS-LOCK-X

**X = 2 (2 pcs), 4 (4 pcs)**  
Includes (1) release key  
Cable Lock for 1/8" cable, support loads up to 200 lbs.



### LS-TT

Cable tensioning tool up to 880lbs with 6:1 gear drive with integral torque gauge controls



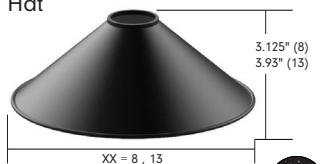
### LS-UVZP-BK-XX

**XX = 30 (30 pcs), 50 (50 pcs)**  
Black UV resistant, heavy duty ties maximum weight up to 100 lbs./per tie

## Light Shade Accessories

**Note:** Light Shade needed for DarkSky compliance

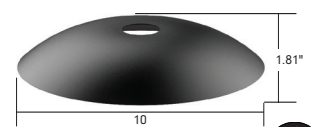
### Hat



### SHADE-HT-BK-XX-XX

**XX = BK (black), CO\* (copper)**  
**XX = 8 (8.3"), 13\*\* (12.6")**  
Black top, black/copper bottom  
Weight: 0.46 lb (8), 1.2 lb (13)

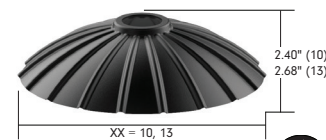
### Dish



### SHADE-DS-BK-BK-10

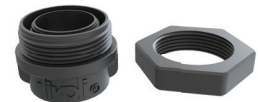
10.2"  
Black top, black bottom  
Weight: 0.76 lb

### Flower



### SHADE-FL-BK-BK-XX

**XX = 10 (9.8"), 13 (13.8")**  
Black top, black bottom  
Weight: 0.63 lb (10), 1.48 lb (13)



### SHADE-ADP-LSL2-XX-XX

**XX = BK (Black), WH\*\* (White)**  
**XX = 01 (1 pc), 25 (25 pcs), 50 (pcs)**  
PVC shade adapters black  
**Note:** One adaptor required for each shade

\*Only available for 13 (Hat)

\*\*Consult factory for lead time and MOQ

Tivoli, LLC. reserves the right to modify this specification without prior notice.

Replacement Globes



**LST-CG**  
Litesphere 2.0  
2.5" Clear PET globe  
sold each



**LST-OG**  
Litesphere 2.0  
2.5" Opal PET globe  
sold each



**LST-FG**  
Litesphere 2.0  
2.5" Frosted PET globe  
sold each



**LST-XX**  
**XX = OR** (Orange), **YG** (Yellow),  
**GG** (Green), **BG** (Blue), **RG** (Red),  
**PG** (Purple) PET globe sold each  
3500K is recommended for best color  
result when choosing colored globe



**LST-GIN-2-PET**  
2.5" Gina PET globe  
sold each



**LST-KAT-2-PET**  
2.5" Katie PET globe  
sold each



**LST-ANG-2-PET**  
2.5" Angela PET globe  
sold each

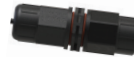
Replacement Parts



**LSL-XX-V-12**  
**XX = 19, 27, 30, 35\*, 40, 50,**  
**AM, RD, RB, GN, YL, TS**  
12V VHO Wedge Base LED  
Sold each



**LSL-XX-X-12**  
**XX = 19, 27, 30, 35\*, 40**  
**X = S** (standard), **H** (high output)  
12V Wedge Base LED  
Sold each



**LSL2-INT-X**  
**X = B** (black), **W** (white)  
Connector to join the strand  
Sold each



**LSL2-EC-X-(PK20)**  
**X = B** (black), **W\*\*** (white)  
Litesphere 2.0 End-Cap  
Weight: 0.0375 lb  
Sold each  
(add **PK20** for pack of 20  
Weight: 0.0375 lb/each)

\*3500K CCT is recommended for best color result when choosing colored globe  
\*\*Contact factory for MOQ and lead time

In-Wall Controls



**TVOQ-1-WH**  
White  
16 DMX channel, 16 scene,  
4 zone, glass touch screen



**TVOQ-10-XX-7**  
**XX = BK** (black), **WH** (white)  
1024 DMX channel, 500 scene,  
10 zone, glass touch screen



**TVOQ-2-BK**  
Black  
512 DMX channel, 99 scene

**Power Supplies**

**INFINITY - MLV / ELV / 0-10V / PWM / TRIAC**

Dim to 1% with a 0-10V Lutron Diva dimmer (by others)

DESCRIPTION	CAT NO	APPLICATION	PRIMARY VOLTAGE	SECONDARY VOLTAGE	CIRCUIT BREAKERS	MAX LOAD	MIN LOAD	CIRCUIT CAPACITY
Infinity Series Class 2 Transformer	INF-J-30-1-2.5-12	Indoor / Outdoor	100 - 277V AC	12V DC	1	30W	3W	2.5A
	INF-J-60-1-5-12				1	60W	6W	5A
	INF-J-180-3-5-12				3	3x60W	3x6W	3x5A
	INF-J-300-5-5-12				5	5x60W	5x6W	5x5A

**ADNM - NON DIMMING**

DESCRIPTION	CAT NO	APPLICATION	PRIMARY VOLTAGE	SECONDARY VOLTAGE	CIRCUIT BREAKERS	MAX LOAD	CIRCUIT CAPACITY
ADNM Series Class 2 Transformer	ADNM-60-1-5-12-D	Indoor / Outdoor	100-277V AC 50/60 HZ	12V DC	1	60W	5A
	ADNM-80-1-5-12-D				1	60W	5A
	ADNM-150-2-5-12-D				2	2x60W	2x5A
	ADNM-240-3-5-12-D				3	3x60W	3x5A
	ADNM-320-4-5-12-D				4	4x60W	4x5A

**ADNM - 0-10V DIMMING**

DESCRIPTION	CAT NO	APPLICATION	PRIMARY VOLTAGE	SECONDARY VOLTAGE	CIRCUIT BREAKERS	MAX LOAD	CIRCUIT CAPACITY
ADNM Series Class 2 Transformer	ADNM-60-1-5-12-DOT	Indoor / Outdoor	100-277V AC 50/60 HZ	12V DC	1	60W	5A
	ADNM-80-1-5-12-DOT				1	60W	5A
	ADNM-150-2-5-12-DOT				2	2x60W	2x5A
	ADNM-240-3-5-12-DOT				3	3x60W	3x5A
	ADNM-320-4-5-12-DOT				4	4x60W	4x5A

**ADNM - DMX SINGLE ADDRESS**

DESCRIPTION	CAT NO	APPLICATION	PRIMARY VOLTAGE	SECONDARY VOLTAGE	CIRCUIT BREAKERS	MAX LOAD	CIRCUIT CAPACITY
ADNM Series Class 2 Transformer	ADNM-60-1-5-12-DIN	Indoor / Outdoor	100-277V AC 50/60 HZ	12V DC	1	60W	5A
	ADNM-80-1-5-12-DIN				1	60W	5A
	ADNM-150-2-5-12-DIN				2	2x60W	2x5A
	ADNM-240-3-5-12-DIN				3	3x60W	3x5A
	ADNM-320-4-5-12-DIN				4	4x60W	4x5A

**ADNM - DMX MULTI ADDRESS**

DESCRIPTION	CAT NO	APPLICATION	PRIMARY VOLTAGE	SECONDARY VOLTAGE	CIRCUIT BREAKERS	MAX LOAD	CIRCUIT CAPACITY
ADNM Series Class 2 Transformer	ADNM-150-2-5-12-DIN-2	Indoor / Damp	100-277V AC 50/60 Hz	12V DC	2	2x60W	5A
	ADNM-240-3-5-12-din-3				3	3x60W	3x5A