

FLEX120

28

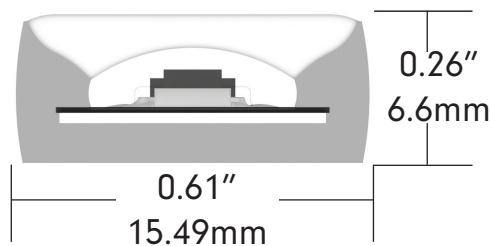


Order Guide

Note: Please specify lit lengths in 3" increments - based on "Section" choice. Power feeds will be factory assembled.

PRODUCT CODE	LED QTY	LED COLOR	VOLTAGE
FLX120	28		120
FLX120 = FLEX120 Tape			
	28 = 28	24 = 2400K	120 = 120V AC
		27 = 2700K	
		30 = 3000K	
		35 = 3500K	
		40 = 4000K	
		50 = 5000K	

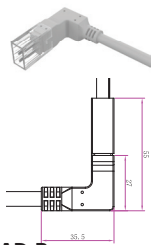
Dimensions



Specifications

Output						
Kelvin Temperature	2400K	2700K	3000K	3500K	4000K	5000K
Lumens/ft	390	430	460	480	500	500
Efficacy (Lm/W)	65	72	77	80	83	83
CRI	90+					
LEDs/ft	28					
Beam Angle	130°					
Electrical						
Input Voltage	110V - 120V					
Power Consumption W/ft	6W					
Physical						
Dimensions	0.61" W x 0.26" H					
Operating Temperature	-40°F (-40°C) ~ +140°F (+60°C)					
Maximum Roll Size	100'					
Maximum Electrical Run	180'					
Section	3"					
Certification and Testing						
Certification	cETLus, RoHS					
IP Rating	IP65					
Environment	Outdoor					
Warranty	3 years					

Power-Lead, Jumpers & End-Prep



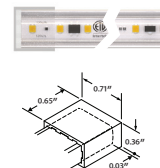
Factory attached 10' bare wire
bottom power lead



Factory attached 10' bare wire
standard power lead



XX = 06 (6"), 12 (12")
Factory attached jumper to connect two Flex120 runs



Factory attached end cap
Note: Flex120 channel 01 and 02 will not accommodate the end cap within the channel. See page 9 for additional length beyond the channel to complete the total run measurement.

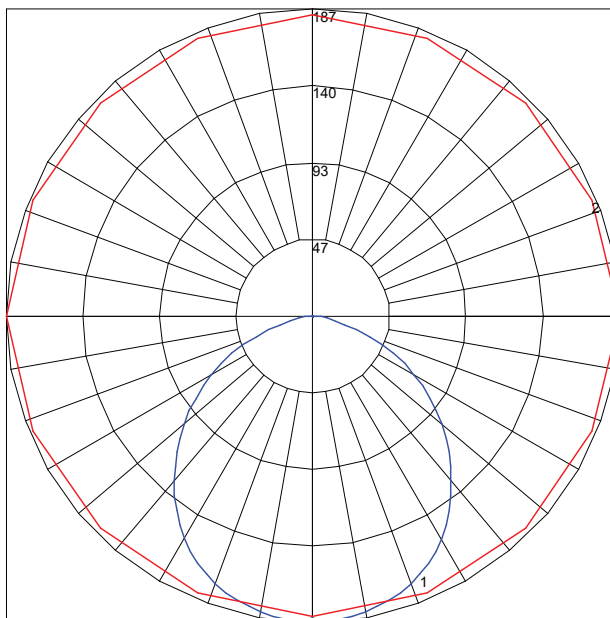


L connector for 90 degree bend application



Clear joiner for connection
of two strips with no light
interruption

Photometrics



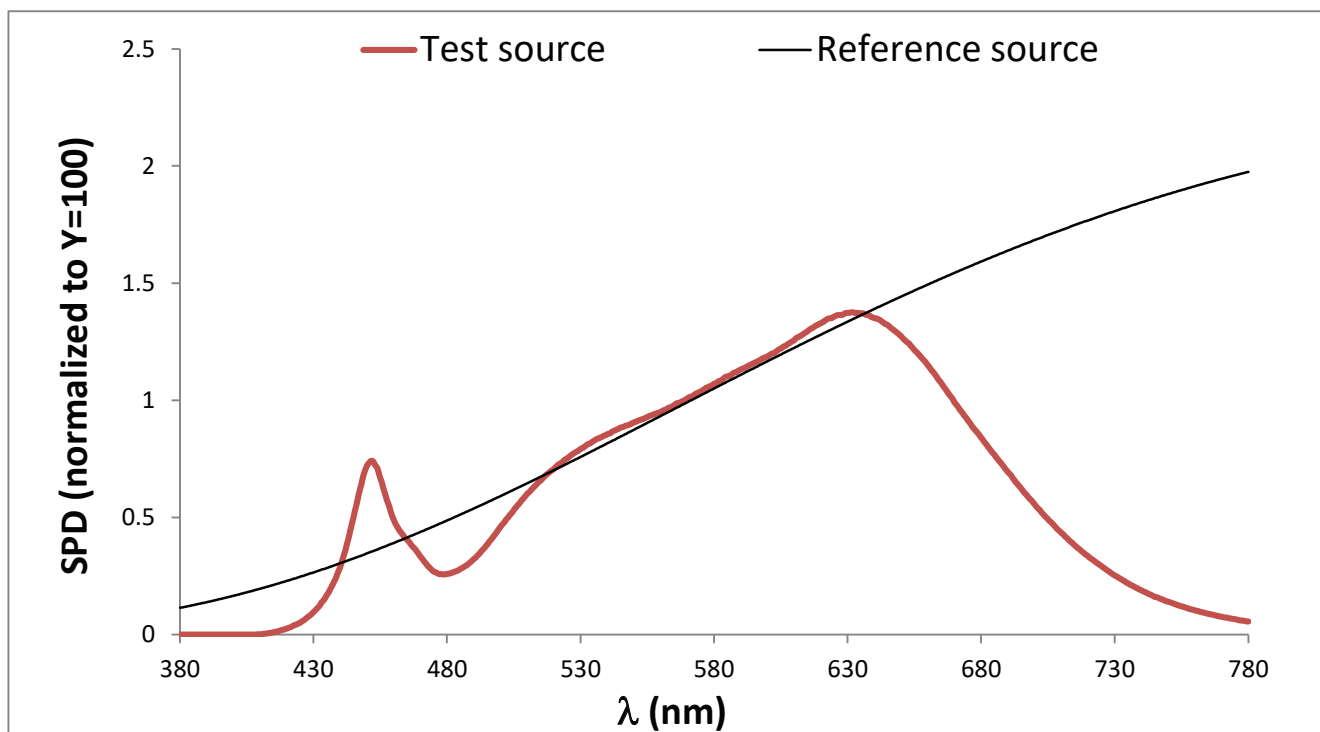
Maximum Candela = 186.9 Located At Horizontal Angle = 0, Vertical Angle = 2.5
 # 1 - Vertical Plane Through Horizontal Angles (0 - 180) (Through Max. Cd.)
 # 2 - Horizontal Cone Through Vertical Angle (2.5) (Through Max. Cd.)

Distance	Center Beam FC	Beam Width	
1.7 FT	63.8 FC	4.5 FT	4.4 FT
3.3 FT	16.9 FC	8.8 FT	8.6 FT
5.0 FT	7.37 FC	13.3 FT	13.0 FT
6.7 FT	4.11 FC	17.8 FT	17.4 FT
8.3 FT	2.68 FC	22.0 FT	21.6 FT
10.0 FT	1.84 FC	26.6 FT	26.0 FT

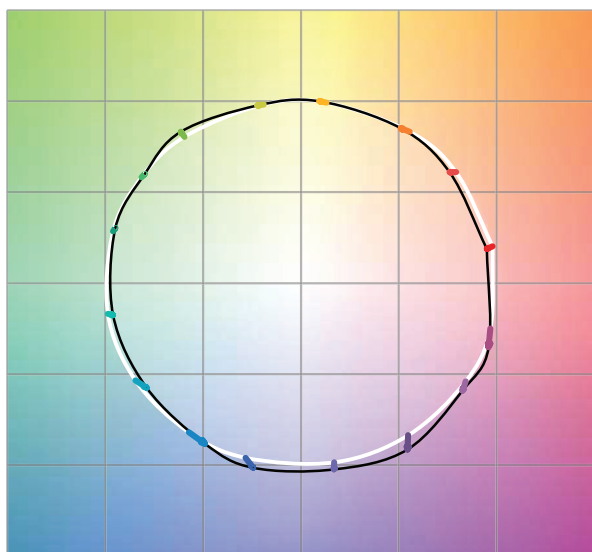
■ Horiz. Spread 104.9 ° ■ Vert. Spread 106.0 °

TM-30

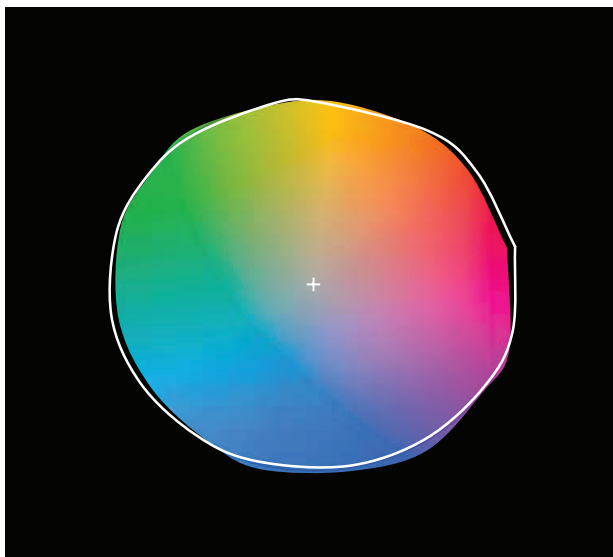
R_f	R_g	CCT (K)	D_{uv}	u'	v'
91	101	3014	0.0006	0.2499	0.5219



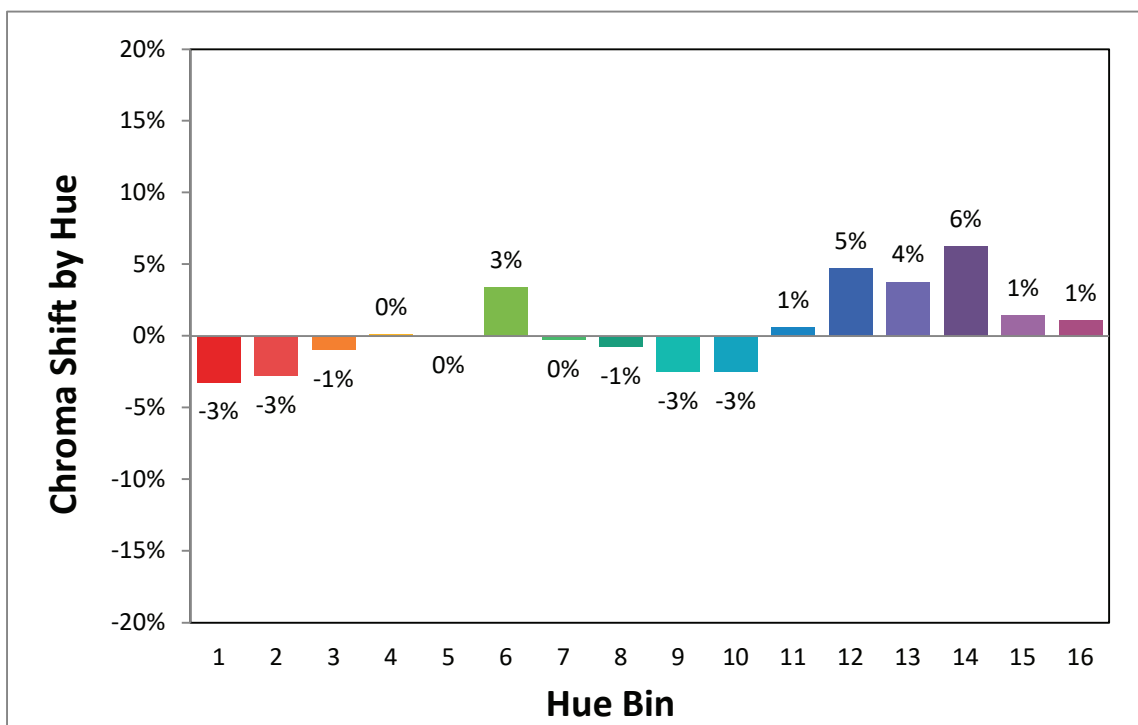
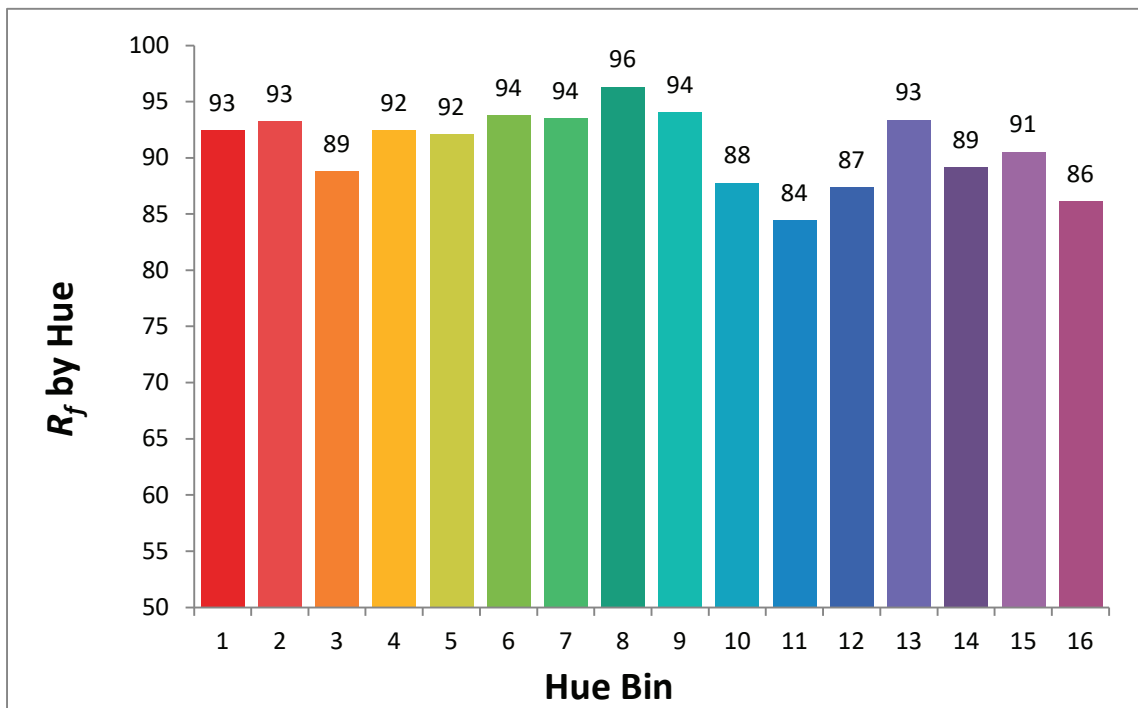
Color Vector Graphic



Color Distortion Graphic

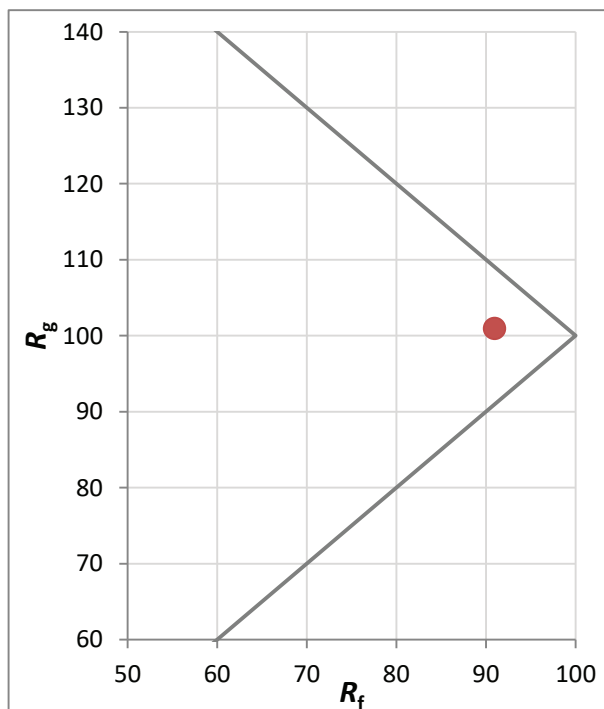


TM-30



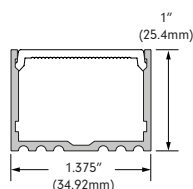
TM-30

Hue Bin	R_f	Graphic Shifts (%)	
		Chroma	Hue
1	93	-3%	-1%
2	93	-3%	2%
3	89	-1%	5%
4	92	0%	4%
5	92	0%	3%
6	94	3%	0%
7	94	0%	-2%
8	96	-1%	-2%
9	94	-3%	1%
10	88	-3%	7%
11	84	1%	10%
12	87	5%	5%
13	93	4%	-1%
14	89	6%	-5%
15	91	1%	-5%
16	86	1%	-10%

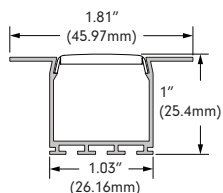


Compatible Extrusions

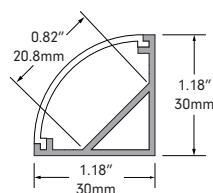
■ Fits 12mm Snap Connector



ALTN-CHAN-SLV-6.5
Anodized Aluminum Extrusion,
available in 6.5' lengths



NOYS-CHAN-SLV-6.5
Anodized Aluminum Extrusion,
available in 6.5' lengths



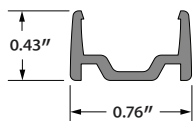
FRE-CHAN-SLV-6.5
Anodized Aluminum Extrusion,
available in 6.5' lengths



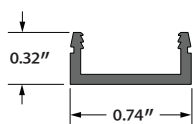
Note: Flex120 in ALTON/NOYES/Fresco channel. A dark spot is created at the power lead side due to non-lit connection.

Mounting Channel - Open

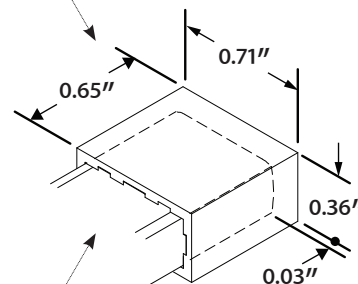
Note: Flex120 channel 01 and 02 will not accommodate the end cap within the channel. See below for additional length beyond the channel to complete the total run measurement.



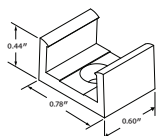
FLX120-CHAN-01
PVC low-profile channel
6.5' length



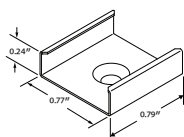
FLX120-CHAN-02
Aluminum low-profile channel
6.5' length



Clips



FLX120-CLIP-01
PVC Mounting clip
For Flex120 tape
Sold Each



FLX120-CLIP-02
Metal Mounting clip
For aluminum channel 02
Sold in 4pk