

FLEX120

28



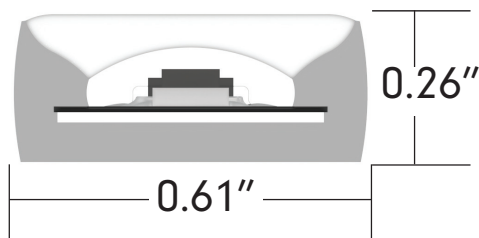
tivoli®

Order Guide

Note: Please specify lit lengths in 3" increments - based on "Section" choice. Power feeds will be factory assembled.

PRODUCT CODE	LED QTY	LED COLOR	VOLTAGE
FLX120 FLX120 = FLEX120 Tape	28 28 = 28	24 = 2400K 27 = 2700K 30 = 3000K 35 = 3500K 40 = 4000K 50 = 5000K	120 120 = 120V AC

Dimensions



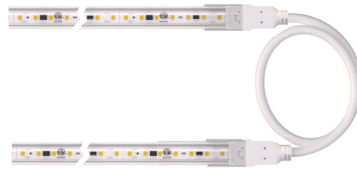
Specifications

Output						
Kelvin Temperature	2400K	2700K	3000K	3500K	4000K	5000K
Lumens/ft	390	430	460	480	500	500
Efficacy (Lm/W)	65	72	77	80	83	83
CRI	90+					
LEDs/ft	28					
Beam Angle	130°					
Electrical						
Input Voltage	110V - 120V					
Power Consumption W/ft	6W					
Physical						
Dimensions	0.61" W x 0.26" H					
Operating Temperature	-40°F (-40°C) ~ +140°F (+60°C)					
Maximum Roll Size	100'					
Maximum Electrical Run	180'					
Section	3"					
Certification and Testing						
Certification	cETLus, RoHS					
IP Rating	IP65					
Environment	Outdoor					
Warranty	3 years					

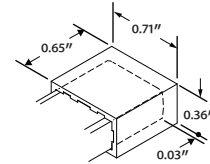
Power-Lead, Jumpers & End-Prep



FLX120-LEAD-C
Factory attached 10' bare wire power lead



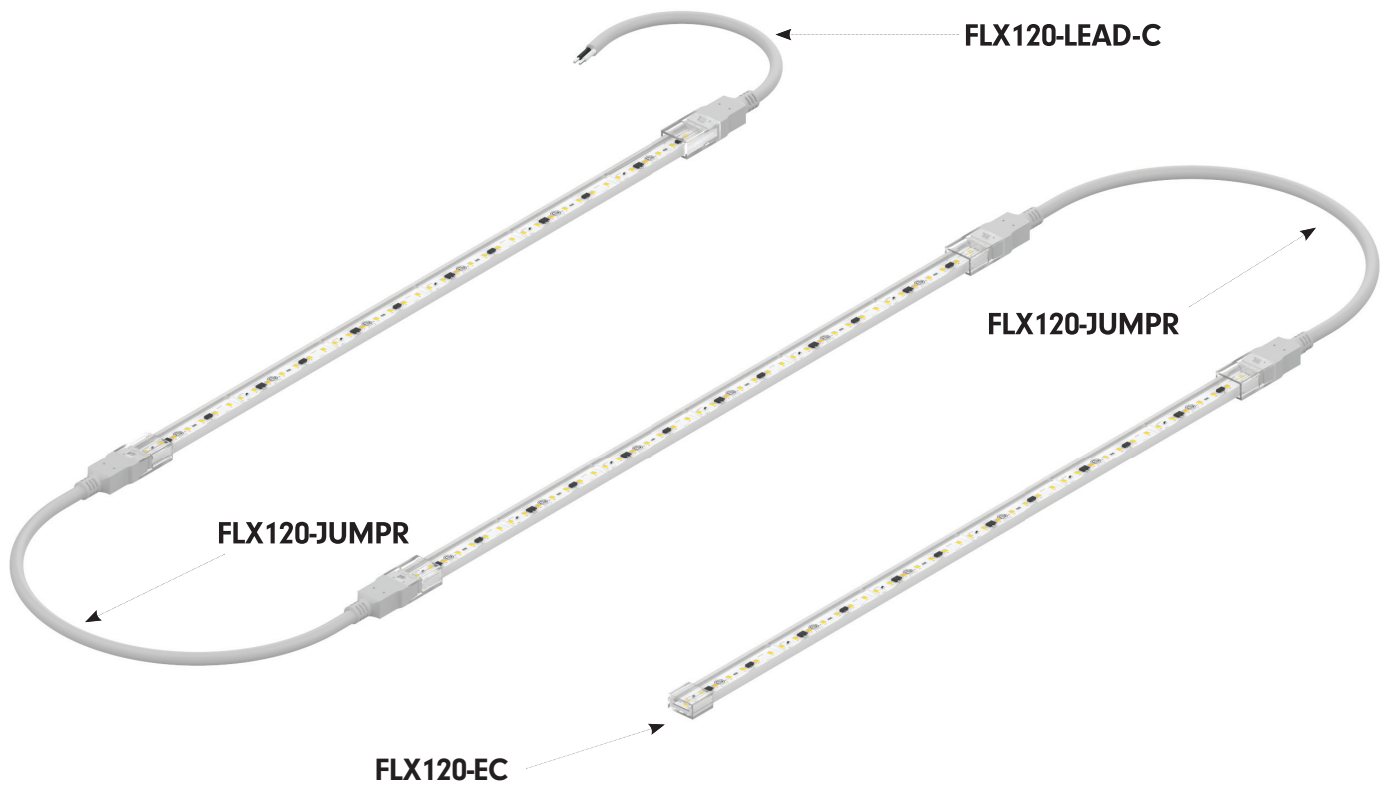
FLX120-JUMPR-XX
XX = 06 (6"), 12 (12")
Factory attached jumper to connect two Flex120 runs



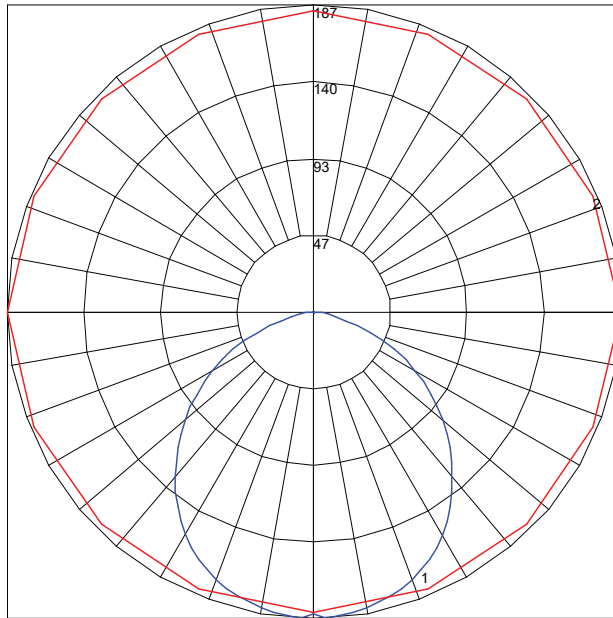
FLX120-EC
Factory attached end cap

Note: Flex120 channel 01 and 02 will not accommodate the end cap within the channel. See page 9 for additional length beyond the channel to complete the total run measurement.

Layout Example



Photometrics



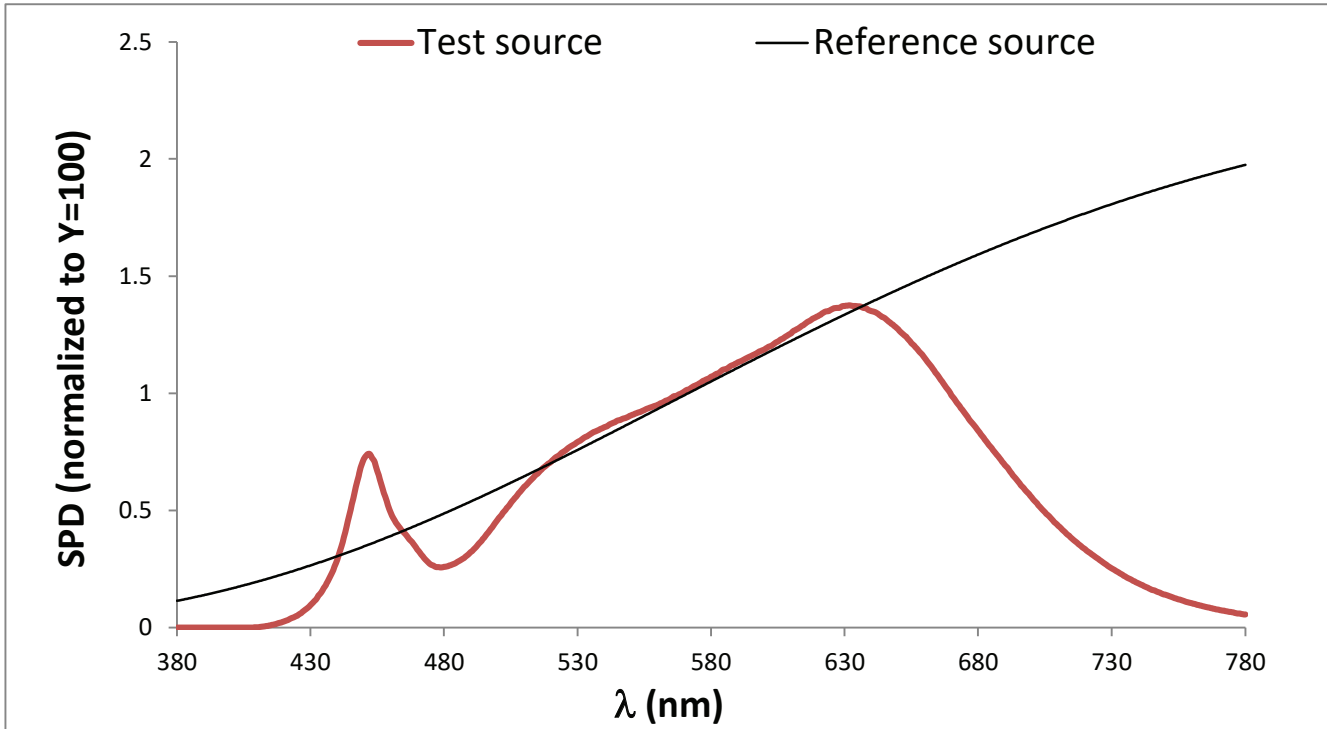
Maximum Candela = 186.9 Located At Horizontal Angle = 0, Vertical Angle = 2.5
 # 1 - Vertical Plane Through Horizontal Angles (0 - 180) (Through Max. Cd.)
 # 2 - Horizontal Cone Through Vertical Angle (2.5) (Through Max. Cd.)

Distance	Center Beam FC	Beam Width	
1.7 FT	63.8 FC	4.5 FT	4.4 FT
3.3 FT	16.9 FC	8.8 FT	8.6 FT
5.0 FT	7.37 FC	13.3 FT	13.0 FT
6.7 FT	4.11 FC	17.8 FT	17.4 FT
8.3 FT	2.68 FC	22.0 FT	21.6 FT
10.0 FT	1.84 FC	26.6 FT	26.0 FT

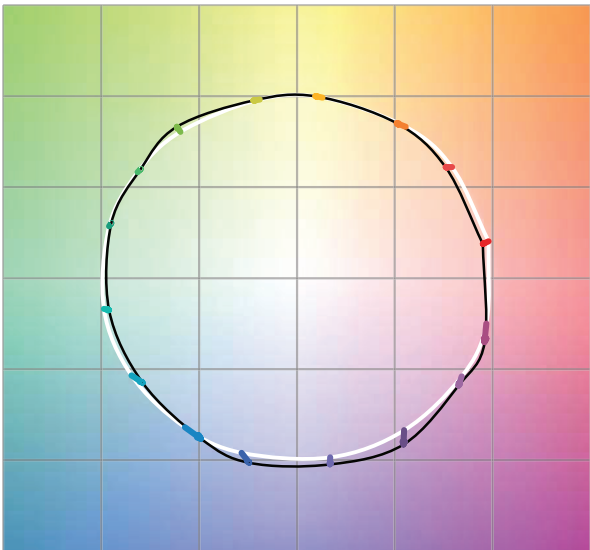
■ Horiz. Spread 104.9 ° ■ Vert. Spread 106.0 °

TM-30

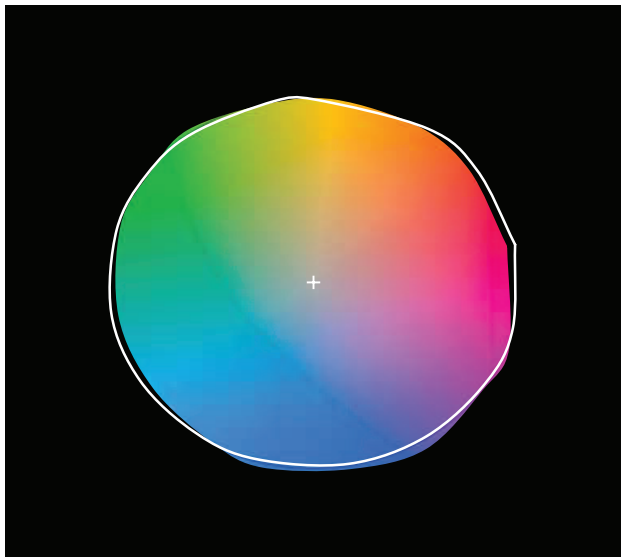
R_f	R_g	CCT (K)	D_{uv}	u'	v'
91	101	3014	0.0006	0.2499	0.5219



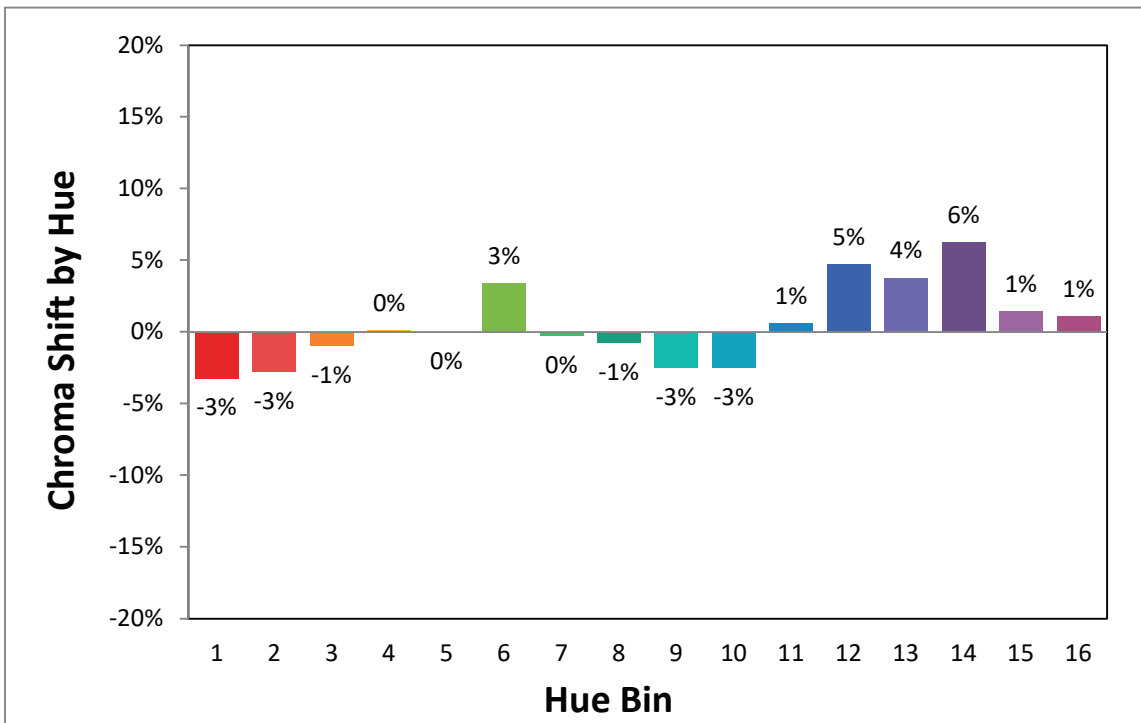
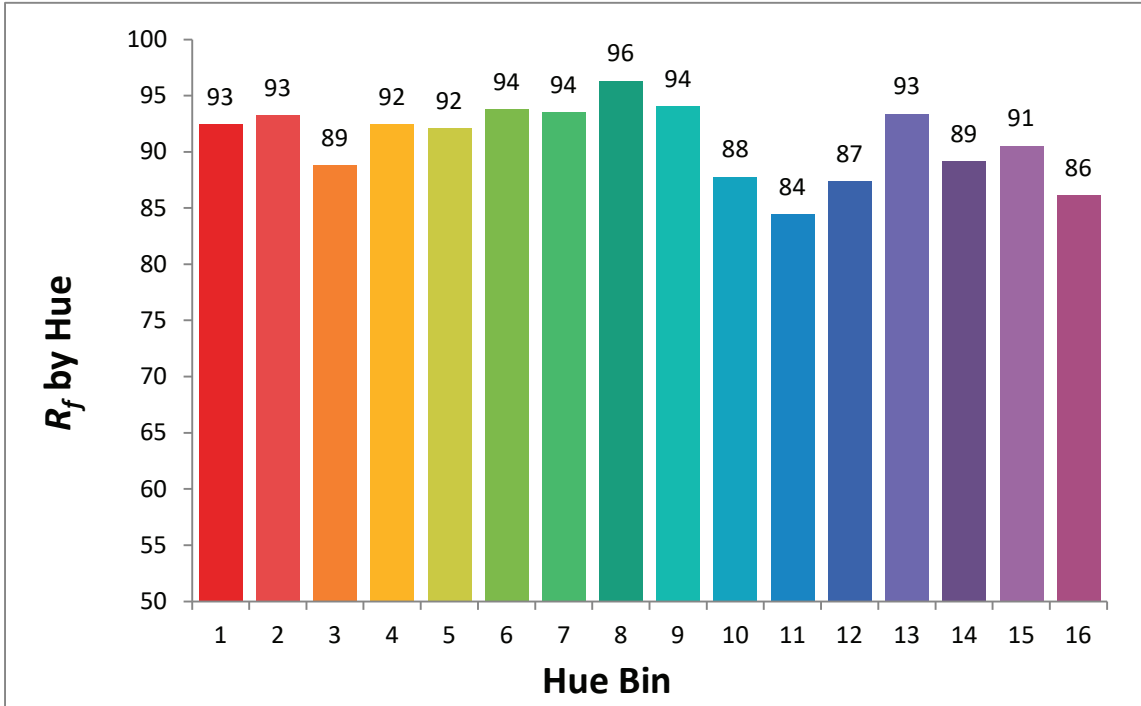
Color Vector Graphic



Color Distortion Graphic

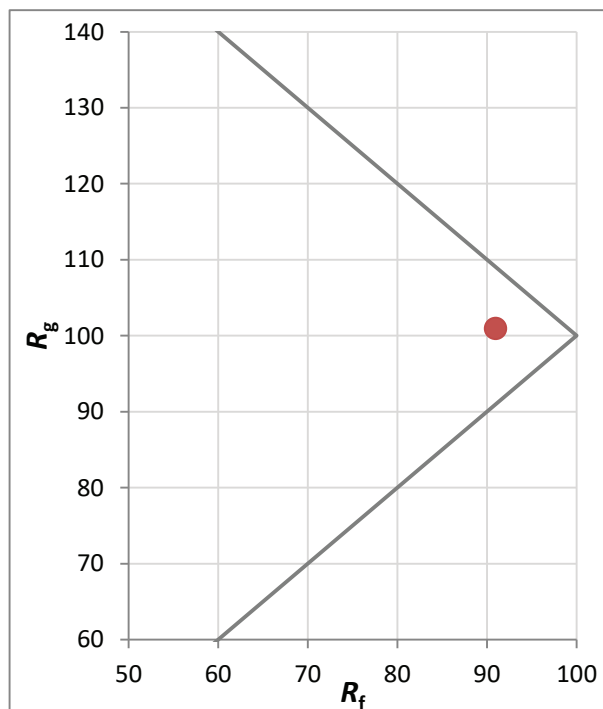


TM-30



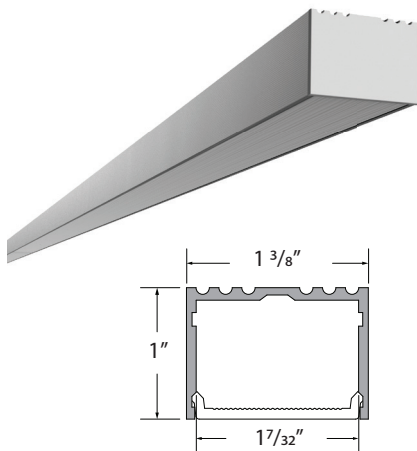
TM-30

Hue Bin	R_f	Graphic Shifts (%)	
		Chroma	Hue
1	93	-3%	-1%
2	93	-3%	2%
3	89	-1%	5%
4	92	0%	4%
5	92	0%	3%
6	94	3%	0%
7	94	0%	-2%
8	96	-1%	-2%
9	94	-3%	1%
10	88	-3%	7%
11	84	1%	10%
12	87	5%	5%
13	93	4%	-1%
14	89	6%	-5%
15	91	1%	-5%
16	86	1%	-10%



Mounting Channel - Closed

ALTON



ALTN-CHAN-SLV-6.5
Anodized Aluminum Extrusion,
available in 6.5' lengths



ALTN-LNS-OPL-6.5
Lens, opal, length 6.5'



ALTN-LNS-CLR-6.5
Lens, clear, length 6.5'



ALTN-LNS-DIF-6.5
Lens, diffuser, length 6.5'

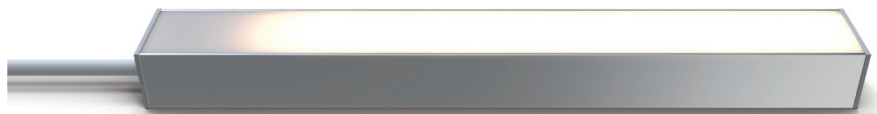


ALTN-EC-01
Solid End Cap

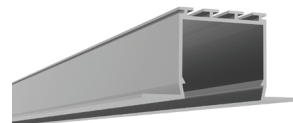
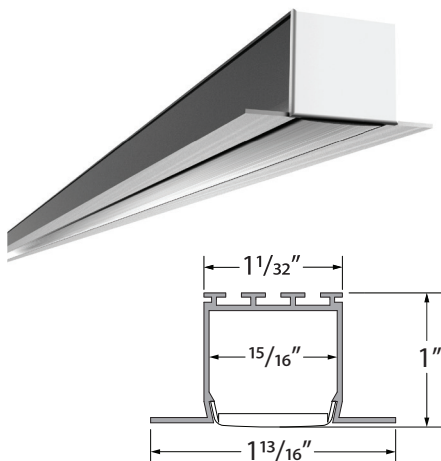


ALTN-EC-02
Power-feed End
Cap

Note: Example of Flex120 in ALTON channel. Dark spot are created at power lead side due to non-lit connection.



NOYES



NOYS-CHAN-SLV-6.5
Anodized Aluminum Extrusion,
available in 6.5' lengths



NOYS-LNS-OPL-6.5
Lens, opal, length 6.5'



NOYS-LNS-CLR-6.5
Lens, clear, length 6.5'



NOYS-LNS-DIF-6.5
Lens, diffuser, length 6.5'



NOYS-EC-01
Solid End Cap

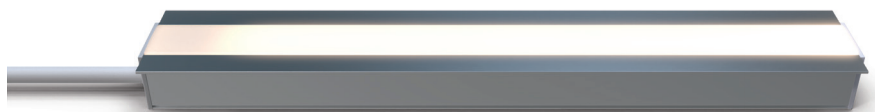


NOYS-EC-02
Power-feed End
Cap



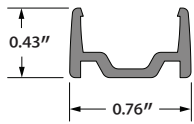
NOYS-SPRiNG-CLP
Clip, Spring, Metal

Note: Example of Flex120 in NOYES channel. Dark spot are created at power lead side due to non-lit connection.

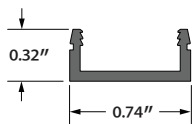
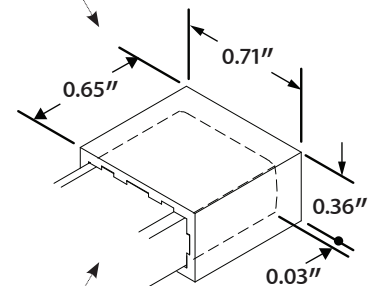


Mounting Channel - Open

Note: Flex120 channel 01 and 02 will not accommodate the end cap within the channel. See below for additional length beyond the channel to complete the total run measurement.



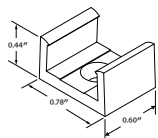
FLX120-CHAN-01
PVC low-profile channel
8' length



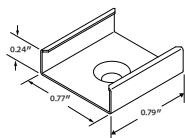
FLX120-CHAN-02
Aluminum low-profile channel
8' length



Clips



FLX120-CLIP-01
PVC Mounting clip
For Flex120 tape
Sold Each



FLX120-CLIP-02
Metal Mounting clip
For aluminum channel 02
Sold in 4pk