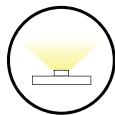


24V DC



4.4 W/ft | 321lm/ft



Non-Field Cuttable
(See page 6 for details)



Max Continuous Run



Dimmable



VHB Tape



Silicone Jacket



UV and Saltwater
Resistant



Warranty



2200K



2400K



2700K



3000K



3500K



4000K



5000K

Ordering Information

PRODUCT CODE	INTENSITY	INSTALL	LED COLOR	VOLTAGE
TPLD	HO	O		24
TPLD Tivotape DEFINE 90+ CRI	HO High Output	O Outdoor	22 2200K 24 2400K 27 2700K 30 3000K 35 3500K 40 4000K 50 5000K	24 24V DC



TivoTape Run Lengths & End Preps

Please specify length of run with quantity of run(s) and end prep type at time of ordering.
Note: Only (1) end prep needed for each run (see page 2)
Outdoor TivoTape is non-field cuttable - Factory Prep Only

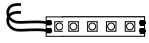


Electrical & Photometric Data (Based on 90+ CRI / 3000K)							
Input Voltage	24V DC						
Dimming Option	MLV/ELV/0-10V <i>Consult factory for DMX dimming</i>						
Power Supply	Class 2						
Wire Size (End Prep)	18 AWG, 2 wire						
Power Consumption	4.4W/ft.						
Color Temperature (CCT)	2200K	2400K	2700K	3000K	3500K	4000K	5000K
Lumen Output	250	257	313	321	327	330	337
Efficacy	65	69	72	73	75	78	79
Color Rendering Index (CRI)	94	93	93	93	91	90	90
R9	>50						

Physical	
LED Package	5050
Cut Increments	4" (non-field cuttable - Factory prep only)
LEDs/ft	18
Operating Temperature	-40°F (-40°C) ~ 140°F (60°C)
Environment	IP67 Wet Location, Conformally Coated
Maximum Run Length	21'
Copper Trace	3 Ounce
Adhesive	3M VHB Tape
Dimension	1/2" (12.7mm) Jacket

Performance	
Certification	UL Listed
Lumen Maintenance (L70) Hours	60,000
Binning Tolerance	2 Step MacAdam Elipse
Warranty	3 Years

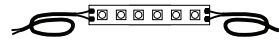
Power Leads and Jumpers Installed by Tivoli's certified solderers



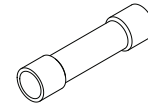
TPL-O-LEAD-C
LEAD END
24" standard 2 conductor
18AWG lead wire factory
attached to one end of tape.



TPL-O-LEAD-D
LEAD/LEAD
24" standard 2 conductor
18AWG lead wire factory
attached to both ends of tape.



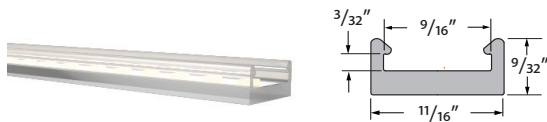
TPL-O-XEP
EXTRA LEAD WIRE
Additional factory attached
18AWG lead wire to extend
lengths of LEAD-C and LEAD-D
up to 20 ft max. Sold per foot
(not shipped as spooled wire).



TPL-O-CONN
18-22AWG BUTT CONNECTORS
Used to interconnect factory
attached lead wires. Sold
individually.
(2 ea required per connection).

Mounting Channel

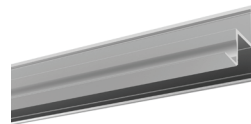
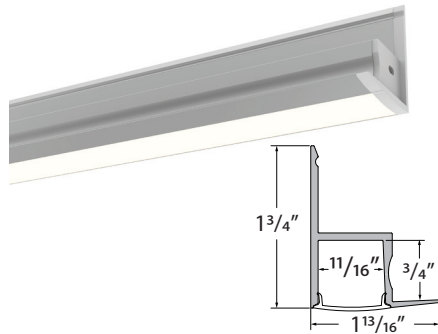
M CHAN



MCHAN-8-LP
Low profile mounting channel,
clear polycarbonate, length 8'.

NOTE: No Lens option

EDGE



EDGE-CHAN-SLV-6.5
Anodized Aluminum Extrusion,
available in 6.5' lengths



EDGE-LNS-OP-6.5
Lens, opal, length 6.5'

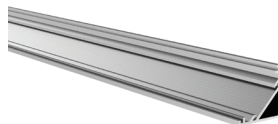
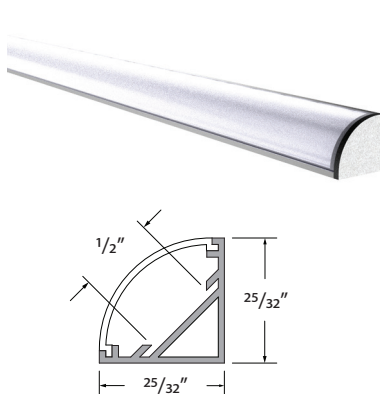


EDGE-EC-01
Solid End Cap



EDGE-EC-02
Powerfeed End Cap

MARSALA



MRSL-CHAN-SLV-6.5
Anodized Aluminum Extrusion,
available in 6.5' lengths



MRSL-LNS-OPL-6.5
Lens, opal, length 6.5'



MRSL-LNS-CLR-6.5
Lens, clear, length 6.5'



MRSL-LNS-DIF-6.5
Lens, diffuser, length 6.5'



MRSL-EC-01
Solid End Cap

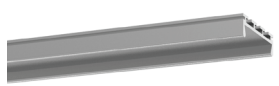
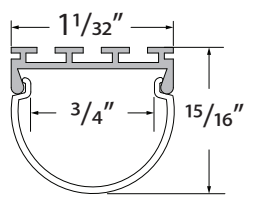


MRSL-EC-02
Powerfeed End Cap



MRSL-CLP-SLV
Clip, Metal

DOME



DOME-CHAN-SLV-6.5
Anodized Aluminum Extrusion,
available in 6.5' lengths



DOME-LNS-OP-6.5
Lens, opal, length 6.5'

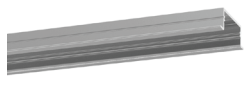
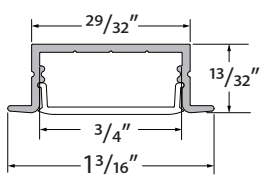
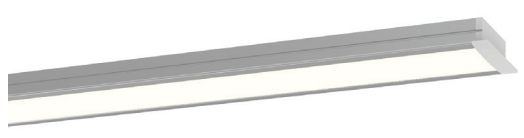


DOME-EC-01
Solid End Cap



DOME-EC-02
Powerfeed End Cap

WARNER



WRNR-CHAN-SLV-6.5
Anodized Aluminum Extrusion,
available in 6.5' lengths



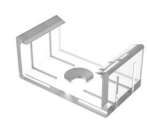
WRNR-LNS-OP-6.5
Lens, opal, length 6.5'



WRNR-EC-01
Solid End Cap

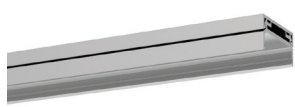
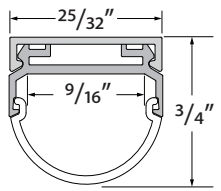
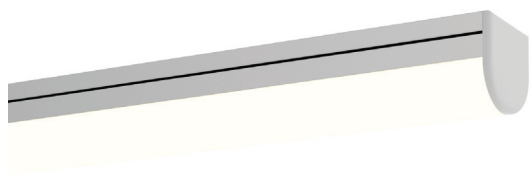


WRNR-EC-02
Power feed End Cap



WRNR-MTBK
Mounting Clip

HORIZON



HRIZ-CHAN-SLV-6.5
Anodized Aluminum Extrusion,
available in 6.5' lengths



HRIZ-LNS-OP-6.5
Lens, opal, length 6.5'

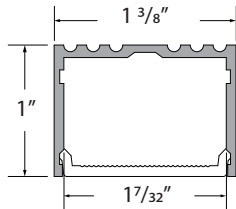
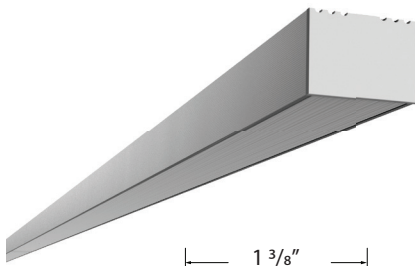


HRIZ-EC-01
Solid End Cap



HRIZ-EC-02
Powerfeed End Cap

ALTON



ALTN-CHAN-SLV-6.5
Anodized Aluminum Extrusion,
Available in 6.5' lengths



ALTN-LNS-OPL-6.5
Lens, Opal, 6.5' length



ALTN-LNS-CLR-6.5
Lens, Clear, 6.5' length



ALTN-LNS-DIF-6.5
Lens, Diffuser, 6.5' length

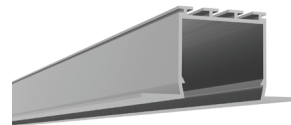
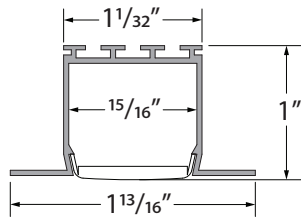
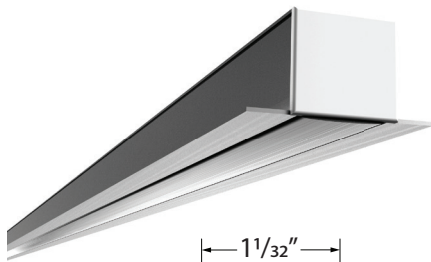


ALTN-EC-01
Solid End Cap



ALTN-EC-02
Powerfeed End Cap

NOYES



NOYS-CHAN-SLV-6.5
Anodized Aluminum Extrusion,
Available in 6.5' lengths



NOYS-LNS-OPL-6.5
Lens, Opal, 6.5' length



NOYS-LNS-CLR-6.5
Lens, Clear, 6.5' length



NOYS-LNS-DIF-6.5
Lens, Diffuser, 6.5' length



NOYS-EC-01
Solid End Cap

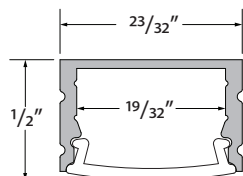
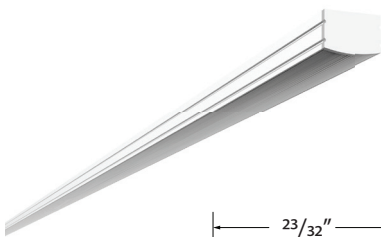


NOYS-EC-02
Powerfeed End Cap



NOYS-SPRING-CLP
Clip, Spring, Metal

MOFETT



MOFT-CHAN-SLV-6.5
Anodized Aluminum Extrusion,
Available in 6.5' lengths



MOFT-LNS-OPL-6.5
Lens, Opal, 6.5' length



MOFT-LNS-CLR-6.5
Lens, Clear, 6.5' length



MOFT-LNS-DIF-6.5
Lens, Diffuser, 6.5' length



MOFT-EC-01
Solid End Cap



MOFT-EC-02
Powerfeed End Cap



MOFT-CLP-SLV
Clip, Metal



Recommended Power Supplies

ADNM - NON DIMMING

DESCRIPTION	CAT NO	APPLICATION	PRIMARY VOLTAGE	SECONDARY VOLTAGE	CIRCUIT BREAKERS	MAX LOAD	CIRCUIT CAPACITY
ADNM Series Class 2 Transformer	ADNM-90-1-4-24-D	Indoor / Outdoor	100-277V AC 50/60 HZ	24V DC	1	90W	3.75A
	ADNM-120-1-4-24-D				1	96W	4A
	ADNM-240-2-4-24-D				2	2x96W	2x4A
	ADNM-320-3-4-24-D				3	3x96W	3x4A

ADNM - 0-10V DIMMING

DESCRIPTION	CAT NO	APPLICATION	PRIMARY VOLTAGE	SECONDARY VOLTAGE	CIRCUIT BREAKERS	MAX LOAD	CIRCUIT CAPACITY
ADNM Series Class 2 Transformer	ADNM-90-1-4-24-DOT	Indoor / Outdoor	100-277V AC 50/60 HZ	24V DC	1	90W	3.75A
	ADNM-120-1-4-24-DOT				1	96W	4A
	ADNM-240-2-4-24-DOT				2	2x96W	2x4A
	ADNM-320-3-4-24-DOT				3	3x96W	3x4A

ADNM - DMX SINGLE ADDRESS

DESCRIPTION	CAT NO	APPLICATION	PRIMARY VOLTAGE	SECONDARY VOLTAGE	CIRCUIT BREAKERS	MAX LOAD	CIRCUIT CAPACITY
ADNM Series Class 2 Transformer	ADNM-90-1-4-24-DIN	Indoor / Outdoor	100-277V AC 50/60 HZ	24V DC	1	90W	3.75A
	ADNM-120-1-4-24-DIN				1	96W	4A
	ADNM-240-2-4-24-DIN				2	2x96W	2x4A
	ADNM-320-3-4-24-DIN				3	3x96W	3x4A

ADNM - DMX MULTI ADDRESS

DESCRIPTION	CAT NO	APPLICATION	PRIMARY VOLTAGE	SECONDARY VOLTAGE	CIRCUIT BREAKERS	MAX LOAD	CIRCUIT CAPACITY
ADNM Series Class 2 Transformer	ADNM-240-2-4-24-DIN-2	Indoor / Outdoor	100-277V AC 50/60 Hz	24V DC	2	2x96W	2x4A
	ADNM-320-3-4-24-DIN-3				3	3x96W	3x4A

ADNM - DMX/DALI FLICKER-FREE FOR TV STUDIO

DESCRIPTION	CAT NO	APPLICATION	PRIMARY VOLTAGE	SECONDARY VOLTAGE	CIRCUIT BREAKERS	MAX LOAD	CIRCUIT CAPACITY
ADNM Series Class 2 Transformer	ADNM-120-1-4-24-DTV	Indoor / Outdoor	100-277V AC 50/60 HZ	24V DC	1	1x96W	1x4A
	ADNM-240-2-4-24-DTV				2	2x96W	2x4A
	ADNM-320-3-4-24-DTV				3	3x96W	3x4A



Recommended Power Supplies

INFINITY - MLV / ELV / 0-10V / PWM / TRIAC

DESCRIPTION	CAT NO	APPLICATION	PRIMARY VOLTAGE	SECONDARY VOLTAGE	CIRCUIT BREAKERS	MAX LOAD	MIN LOAD	CIRCUIT CAPACITY
Infinity Series Class 2 Transformer	INF-J-30-1-1.3-24	Indoor / Outdoor	100 - 277V AC	24V DC	1	30W	3W	1.3A
	INF-J-60-1-2.5-24				1	60W	6W	2.5A
	INF-J-96-1-4-24				1	96W	9W	4A
	INF-J-192-2-4-24				2	2x96W	2x9W	2x4A
	INF-J-288-3-4-24				3	3x96W	3X9W	3x4A

Recommended Dimmers

DIMMING - 0-10V

DESCRIPTION	CAT NO	APPLICATION	INPUT VOLTAGE	OUTPUT VOLTAGE	MAX LOAD	PRICE
0-10V Dimmer	DIM-LD-010	Indoor	12V/24V DC	12V/24V DC	30 mA max. output (sink only)	\$ 120.00/ea

DIMMING -MLV

DESCRIPTION	CAT NO	APPLICATION	INPUT VOLTAGE	OUTPUT VOLTAGE	MAX LOAD
MLV Dimmer	N-600	Indoor	120V AC	120V AC	450W
	N-1000				800W
	N-1500				1200W
	D-600				450W
	M-600				450W
	M-1000				800W

DIMMING - ELV

DESCRIPTION	CAT NO	APPLICATION	INPUT VOLTAGE	OUTPUT VOLTAGE	MAX LOAD
ELV Dimmer	ME-600	Indoor	120V AC	120V AC	450W
	DE-300				300W

Recommended Dimmers

DIMMING - DMX

DESCRIPTION	CAT NO	APPLICATION	INPUT VOLTAGE	OUTPUT PROTOCOL	MAX UNIVERSE
DMX Controller	TVOQ-1-WH	Indoor	5V DC	DMX 512	1
	TVOQ-2-BK		6V DC		
	TVOQ-2-WH				
	TVOQ-10-BK-7				
	TVOQ-10-WH-7		6-7V DC		2



TVOQ-1-WH
WH (White only)



TVOQ-10-XX-7
XX = BK (Black), WH (White)



TVOQ-2-XX
XX = BK (Black), WH (White)