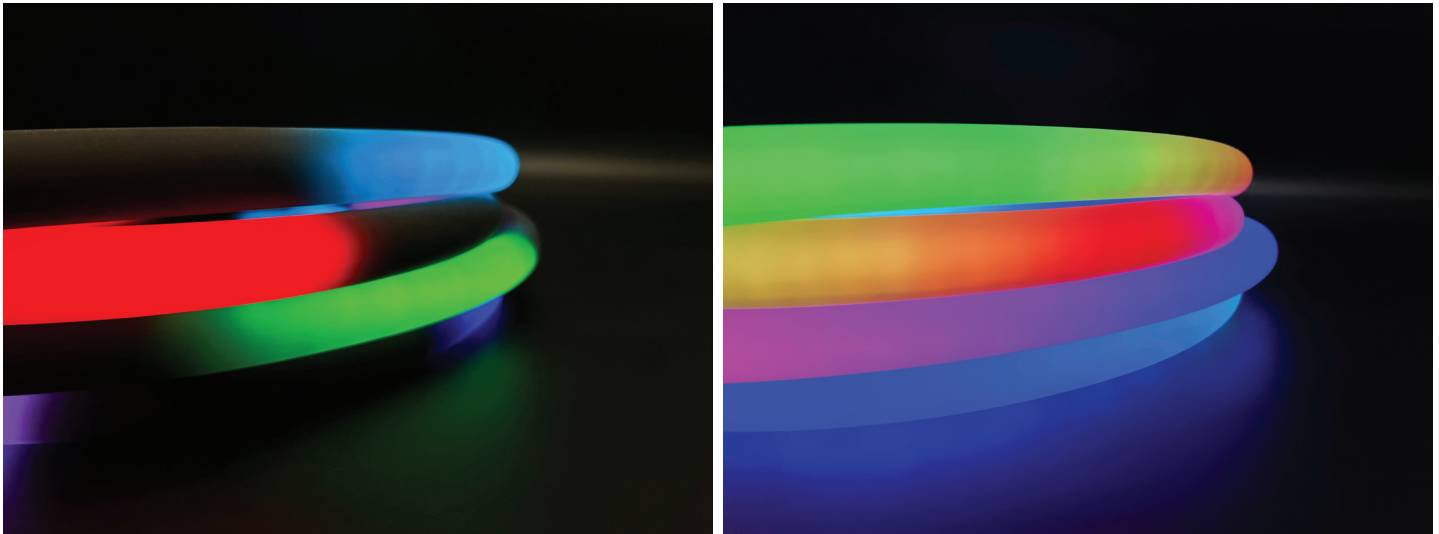


Flexile LG

MIDNIGHT





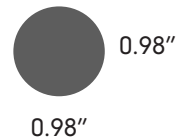
Project: _____ Type: _____

- Tivoli's Flexile has a new look! Flexile Midnight - with an all black jacket that reveals color when lit
- Compare to traditional neon 360° lighted surface illuminates uniformly without any shadowing
- High luminous efficiency with LM80 report
- Easily bend to any shape with superior flexibility
- UV Stabilized with food-grade environmental silicone housing (no yellowing or cracking)
- Resistance to saline solutions, acids, alkali, and corrosive gases
- Low Voltage 12V DC

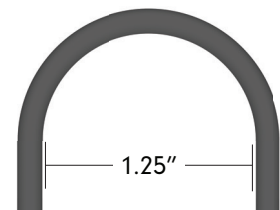


Dimensions

Front Power Lead



Side Power Lead



NOTE: Total run length including power lead and fixture must not exceed 19'

Order Guide

PRODUCT CODE	PROFILE	POWER LEAD DIRECTION	LED COLOR	LENGTH	VOLTAGE
FLXM FLXM = Flexile Midnight 360° Light	LG LG = Large	F = Front S = Side	RGB RGB = RGB mixing	024 = 2' 048 = 4' 075 = 6' 3"	12 12 = 12V DC

For custom cut lengths consult factory for lead time and MOQ

Extra Lead Prep

FLX-XEP

Extra lead wire for extended length.
Sold per ft.

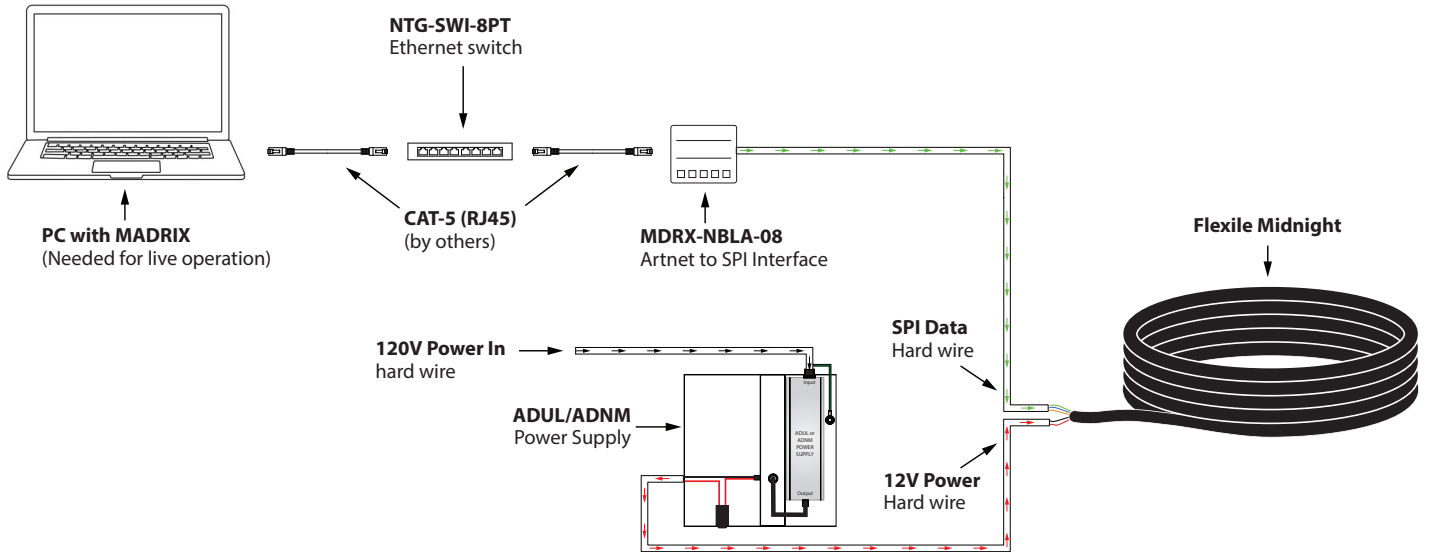
Specification

LED Intensity	Red	Green	Blue	White (All On)
Lumens (lm/ft)	10	30.4	7.62	45.73
Beam Angle	360°			
Electrical				
Dimming/Control	SPI			
Input Voltage	12V DC			
IC	WS2815			
Power Consumption (W/ft)	7.2			
Maximum Run Electrical	8'			
Maximum Run Data (1 Universe)	6' 3"			
Physical				
LED Package	3838			
LED/ft	27			
Sleeve Color	Black			
Dimensions (DIA) Flexile	0.98"			
Cut Increments (factory cut only)	0.437"			
Bend Radius	1.25"			
Material (Flexile)	Flame, UV, Solvent, Saltwater Resistant Silicone			
Storage Temperature	-25°C / -13°F ~ +60°C / +140°F			
Working Temperature	-20°C / -4°F ~ 50°C / +122°F			
Certification and Testing				
Certification	CE, RoHS			
Environment	Damp/Wet rated fixture only			
IP Rating	IP65 rated fixture only			
Rated Hours (TM80)	70000 hrs.			
Warranty	5 Years			

Data Operation & Wiring Diagram Artnet to SPI ON-LINE operation

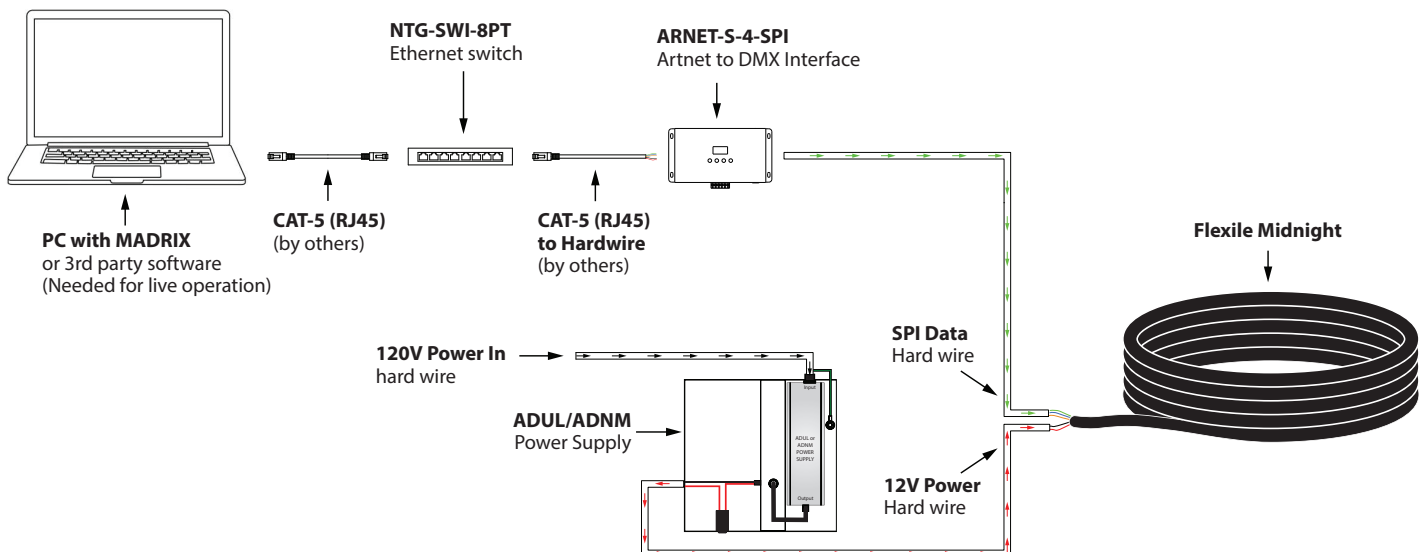
MDRX-NBLA (Live)

This is a live control performance setup using the MDRX-NBLA-XX interface. Widely used for concerts or performance-based manipulation. Use of a live network is necessary for communication between MADRIX 5 software and Flexile Midnight.



ARTNET-S (Live)

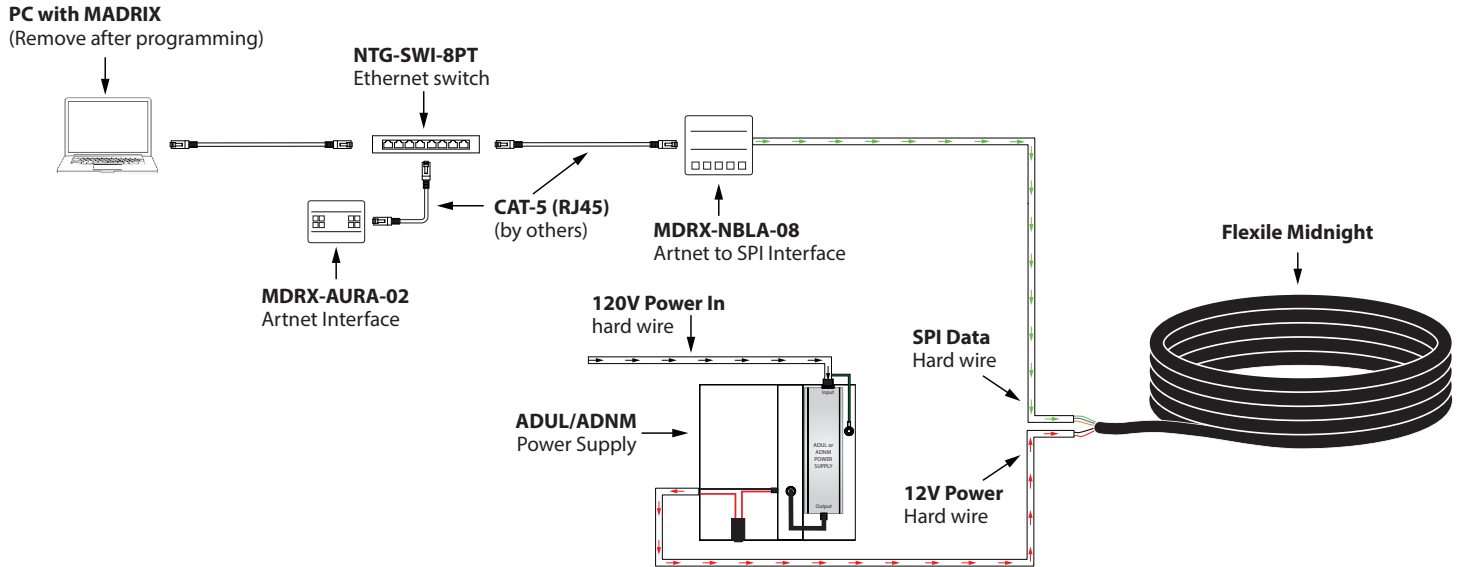
This is a live control performance setup using the ARTNET-S-X-SPI interface. Widely used for concerts or performance-based manipulation. Use of a live network is necessary for communication between MADRIX 5 software and Flexile Midnight.



Data Operation & Wiring Diagram Artnet to SPI OFF-LINE operation

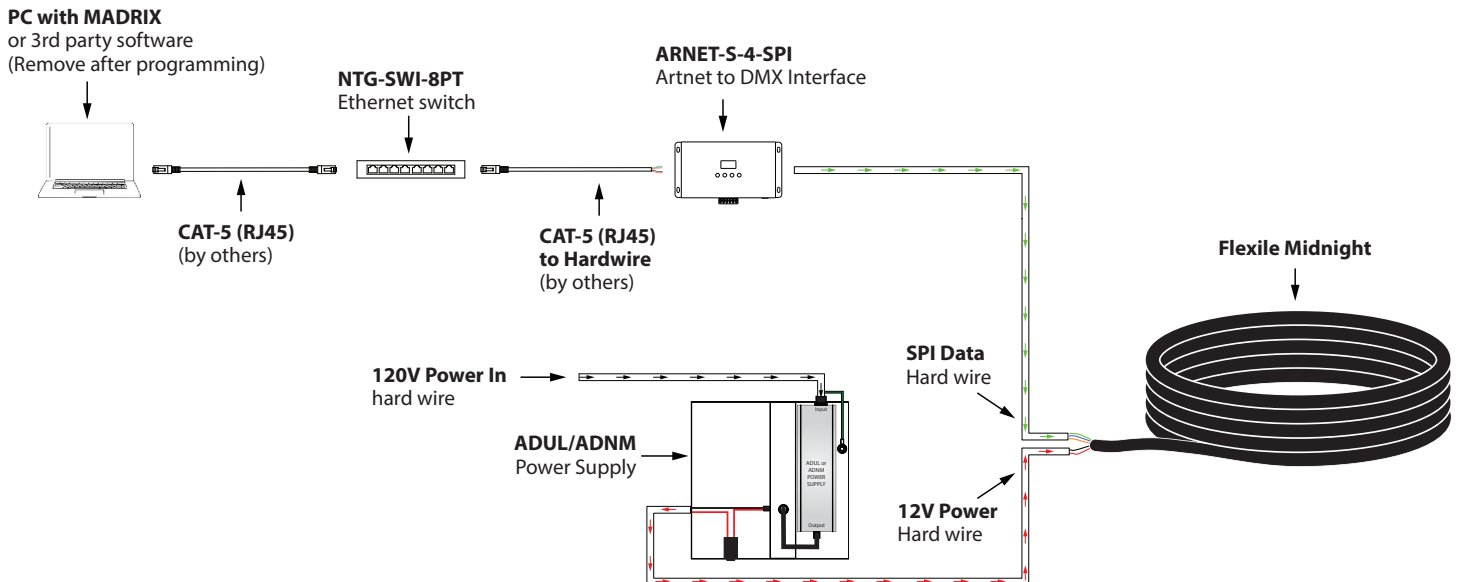
MDRX-AURA (Preset)

A stand-alone system with no need for support via network/software (MADRIX 5). Once scene playback is saved to AURA hardware via lighting software, PC/network can be removed from the system using only the AURA hardware to control playback. Please refer to the AURA specification for setup/record information.



ARTNET-S (Preset)

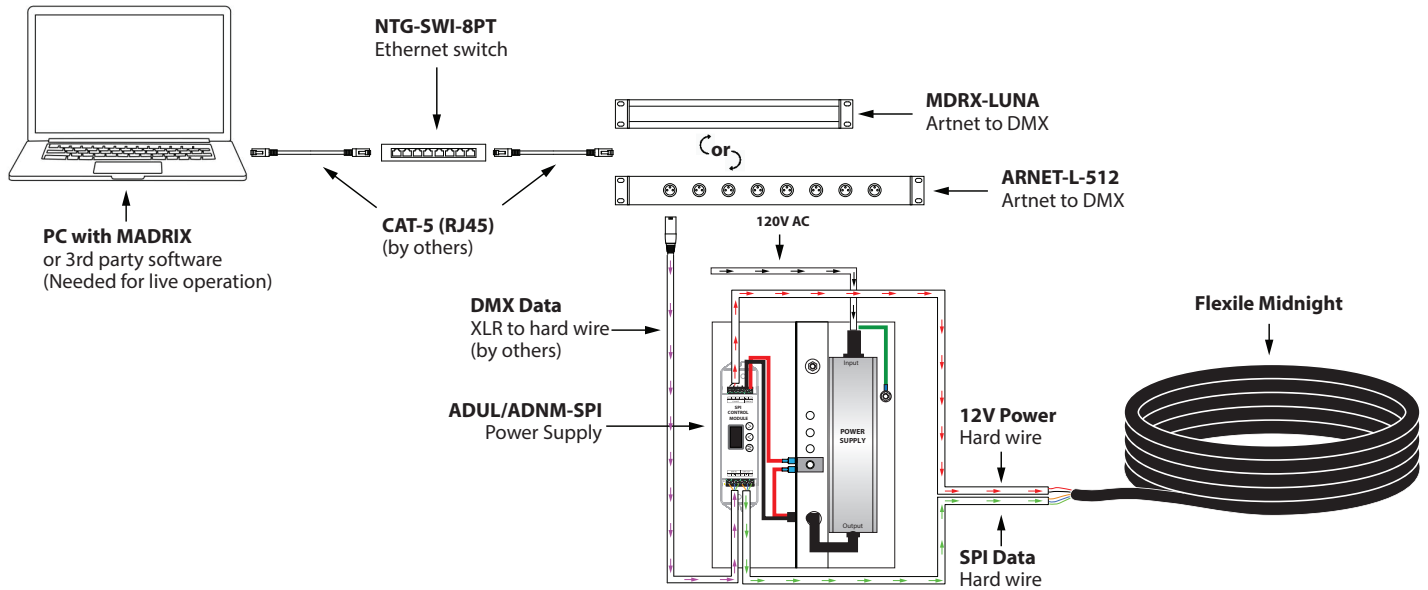
A stand-alone system with no need for support via network/software (MADRIX 5). Once scene playback is saved to ARTNET-S hardware via lighting software, PC/network can be removed from the system using only the ARTNET-S hardware to control playback. Please refer to the ARTNET-S specification for setup/record information.



Data Operation & Wiring Diagram DMX to SPI ON-LINE operation

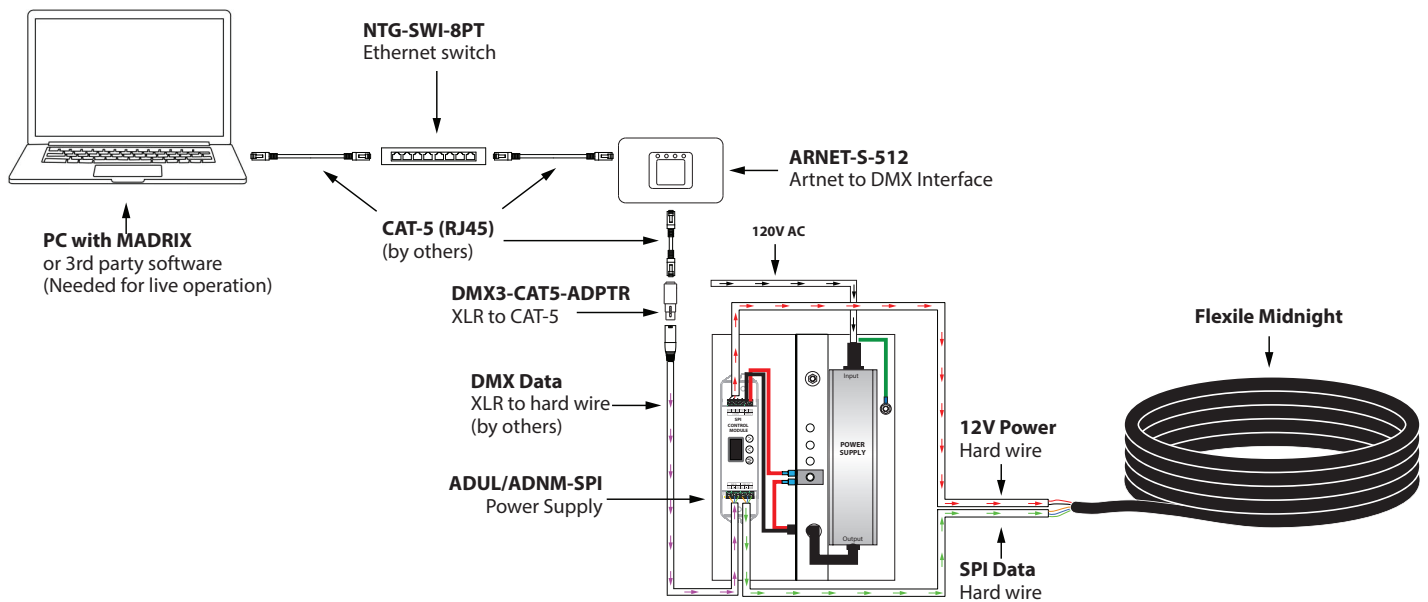
MDRX-LUNA or ARTNET-L (Live)

This is a live control performance setup using the MDRX-LUNA-XX or ARTNET-L-XX-512 interface. Widely used for concerts or performance-based manipulation. Use of a live network is necessary for communication between MADRIX 5 software and Flexile Midnight.



ARTNET-S (Live)

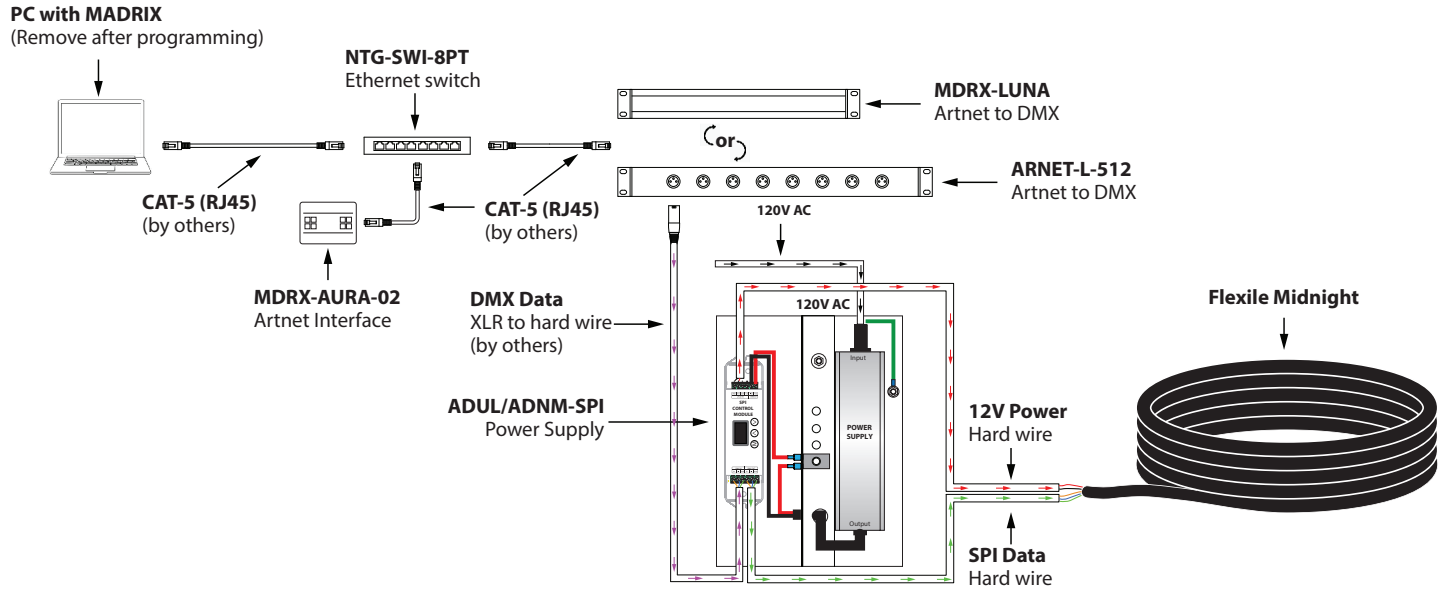
This is a live control performance setup using the ARTNET-S-X-512 interface. Widely used for concerts or performance-based manipulation. Use of a live network is necessary for communication between MADRIX 5 software and Flexile Midnight.



Data Operation & Wiring Diagram DMX to SPI OFF-LINE operation

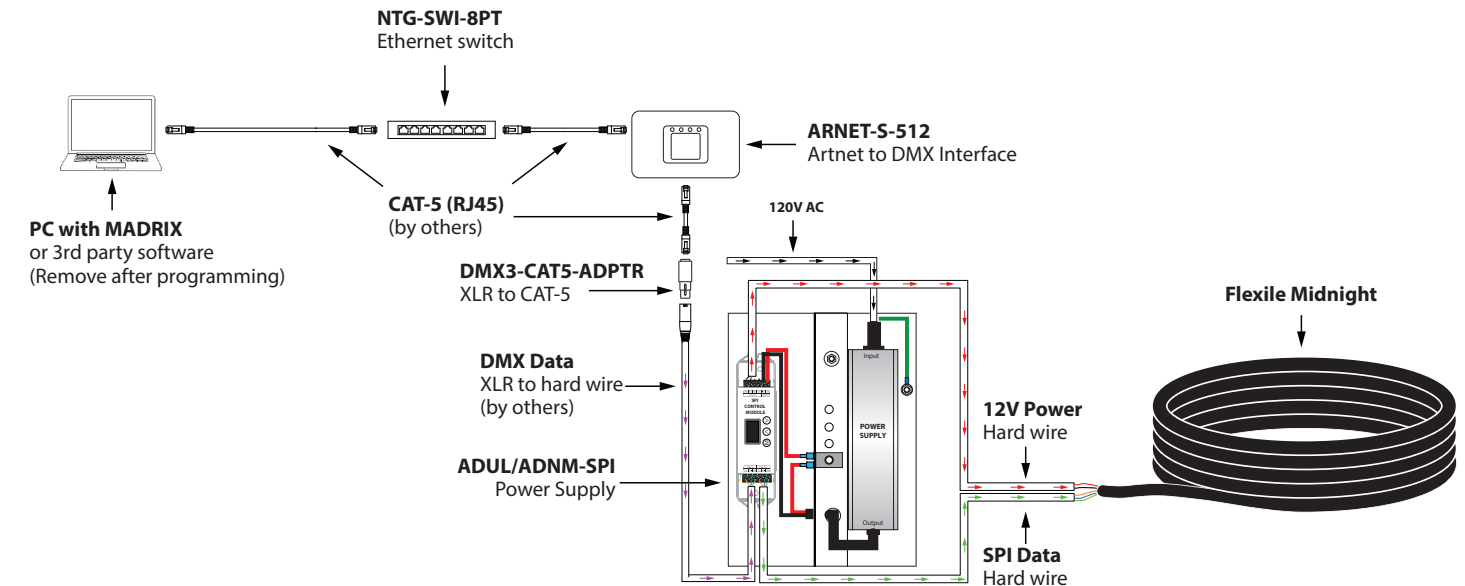
MDRX-LUNA or ARTNET-L (Preset)

A stand-alone system with no need for support via network/software (MADRIX 5). Once scene playback is saved to AURA hardware via lighting software, PC/network can be removed from the system using only the AURA to control playback. Integrate with MDRX-LUNA or ARTNET-L for DMX system. Please refer to the AURA, MDRX-LUNA or ARTNET-L-512 specification for setup and record information.



ARTNET-S (Preset)

A stand-alone system with no need for support via network/software (MADRIX 5). Once scene playback is saved to ARTNET-S-X512 hardware via lighting software, PC/network can be removed from the system using only the ARTNET-S-X512 to control playback. Please refer to the ARTNET-S-512 specification for setup and record information.



Controls



ARTNET-S-8-512
8 port universe Artnet to DMX interface, 4096 DMX channels Programmable for playback and live support (Online or Offline option)



MDRX-AURA-XX
X = 02, 12, 32 (ports)
MADRIX Aura is a stand-alone controller for up to 2, 12, or 32 universes per unit



MDRX-NBLA-08
Up to 8 universes. SPI decoder receives control over ethernet network or USB delivering zero lag to your fixture



ARTNET-S-X-SPI
X = 4 (4 port), **8** (8 port)
Artnet to SPI interface. Programmable for playback and live support (Online or Offline option)

Network Hardware



MDRX-LUNA-XX
XX = 04, 08, 16 (ports)
MADRIX Luna 4, 8, 16 port universe Artnet to DMX interface 16 port 8192, 8 port 4096, 4 port 2048 DMX channels



ARTNET-L-XX-512
XX = 8, 16 (ports)
8 or 16 port universe Artnet to DMX interface, 16 port 8192 DMX channels 8 port 4096 DMX channels

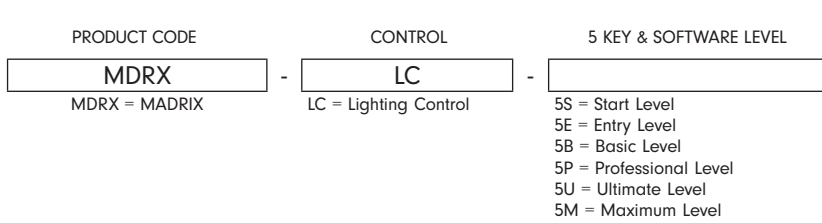


NTG-SWI-XXPT
XX = 8 (8 Port), **16** (16 Port)
NETGEAR 16-Port gigabit Unmanaged Switch



DMX3-F-CAT5-ADPTR
DMX adapter 3-pin XLR female to RJ45

Key & Software Levels

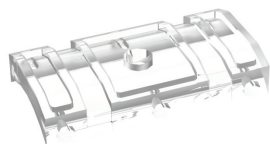


MADRIX KEY
A USB dongle unlocks the software's full output. You can freely switch between different PCs as it is not bound to a specific one. It only needs to be activated online once.

MADRIX 5 LICENSE UPGRADES
You can easily upgrade your MADRIX 5 KEY to any higher license at any time, increasing the available output.

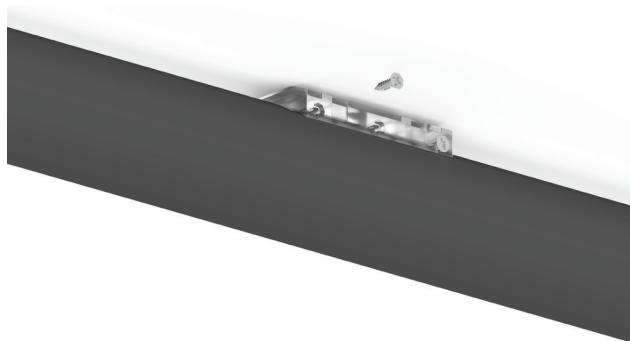
Level	START	ENTRY	BASIC	PROFESSIONAL	ULTIMATE	MAXIMUM
MADRIX 5 Order Code	MDRX-LC-5S	MDRX-LC-5E	MDRX-LC-5B	MDRX-LC-5P	MDRX-LC-5U	MDRX-LC-5M
DMX-Based Output						
DMX Channels	1,024	4,096	16,384	65,536	262,144	1,048,576
DMX Universe Example	2	8	32	128	512	2,048
RGB Voxels Example	341	1,365	5,461	21,845	87,381	349,525
DVI-Based Output						
DVI Voxels	4,096	16,384	262,144	1,048,576	2,097,152	2,097,152
Render Resolution (Pixel x Pixel)	64 x 64	128 x 128	512 x 512	1,024 x 1,024	2,048 x 1,024	2,048 x 1,024

Mounting Options



FLX-LG-MTBK-LP

Clear, low-profile polycarbonate bracket for surface mount application
Includes: (2) brackets, (14) nails, and (5) zip ties



FLX-LG-MTBK-SEMICIRCLE-BK

Metal Black Finish Mounting Bracket
Includes: (2) bracket sets, (2) set screws and hardware



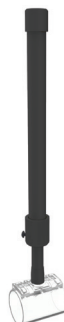
FLX-LG-JOINR-CIR-BK

Black Metal Joiner bracket
Can be coupled with telescoping arm for an circular overhead application
Includes: (1) bracket and hardware



FLX-LG-TEL-MTBK-1-BK

Black telescoping bracket with clear tube clip. Bracket extends to maximum length of 24" and a minimum of 13". Achievable Flexile bend radius of 15" with a recommended on-center spacing of 15" of each bracket. Includes: (1) extension bracket and hardware



FLX-LG-SUS-MTBK-1

72" suspension cable with mounting hardware. Includes a 1.5" clear polycarbonate tube for uninterrupted 360 light distribution.

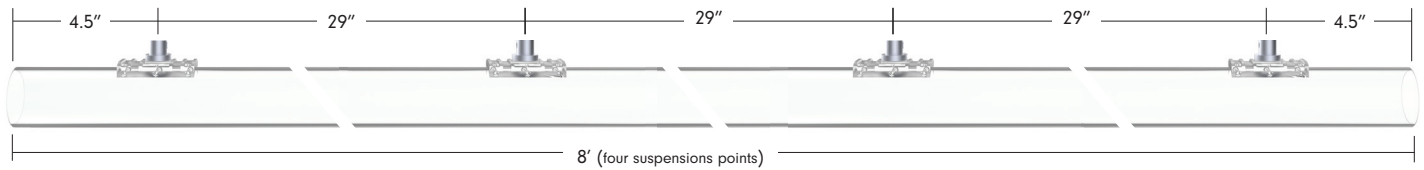
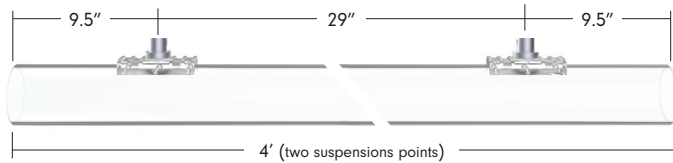
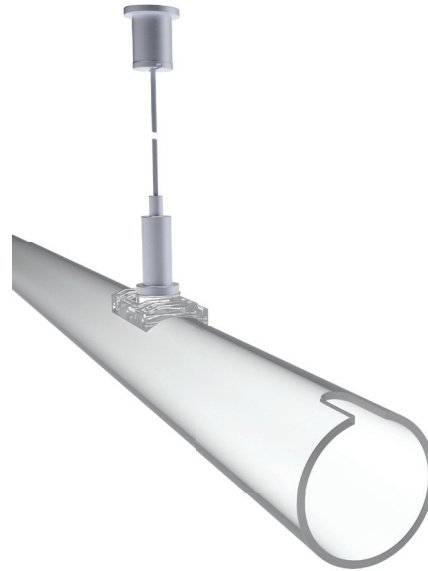


Mounting Options

FLX-LG-H-X-PNDT

X = 4 (46"), 8 (96")

Horizontal clear polycarbonate tube includes two 72" cables and hardware for 4', and four 72" cables and hardware for 8'



FLX-LG-CL-CLIP

PC clip closed 1
Mount spacing 15"
Bend diameter 2.5"
sold each



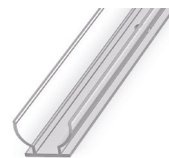
FLX-LG-CL-CHAN

PC channel closed 6.5
Bend diameter 2.5"
sold each



FLX-LG-OP-CLIP

PC clip open 2.36"
Mounting spacing 15"
Bend diameter 3"
*sold each



FLX-LG-OP-CHAN

PC channel open 6.5'
Bend diameter 3"
*sold each



FLX-LG-EC-BK

Metal End Cap
Black finish
sold each

Mounting Layout





Power Supplies Indoor

ADUL - SPI CONTROL

DESCRIPTION	CAT NO	APPLICATION	PRIMARY VOLTAGE	SECONDARY VOLTAGE	CIRCUIT BREAKERS	MAX LOAD	CIRCUIT CAPACITY
ADUL Series Class 2 Transformer	ADUL-60-1-5-12-SPI	Indoor or Damp	100-277V AC 5% HZ	12V DC	1	60W	5A
	ADUL-150-2-5-12-SPI-2				2	2x60W	2x5A
	ADUL-240-3-5-12-SPI-3				3	3x60W	3x5A
	ADUL-320-4-5-12-SPI-4				4	4x60W	4x5A

ADUL - NON DIMMING

DESCRIPTION	CAT NO	APPLICATION	PRIMARY VOLTAGE	SECONDARY VOLTAGE	CIRCUIT BREAKERS	MAX LOAD	CIRCUIT CAPACITY
ADUL Series Class 2 Transformer	ADUL-80-1-5-12-D	Outdoor or Indoor	100-277V AC 5% HZ	12V DC	1	60W	5A
	ADUL-150-2-5-12-D				2	2x60W	2x5A
	ADUL-240-3-5-12-D				3	3x60W	3x5A
	ADUL-320-4-5-12-D				4	4x60W	4x5A

Power Supplies Outdoor / Indoor

ADNM - SPI CONTROL

DESCRIPTION	CAT NO	APPLICATION	PRIMARY VOLTAGE	SECONDARY VOLTAGE	CIRCUIT BREAKERS	MAX LOAD	CIRCUIT CAPACITY
ADNM Series Class 2 Transformer	ADNM-60-1-5-12-SPI	Outdoor or Indoor	100-277V AC 5% HZ	12V DC	1	60W	5A
	ADNM-150-2-5-12-SPI-2				2	2x60W	2x5A
	ADNM-240-3-5-12-SPI-3				3	3x60W	3x5A
	ADNM-320-4-5-12-SPI-4				4	4x60W	4x5A

ADNM - NON DIMMING

DESCRIPTION	CAT NO	APPLICATION	PRIMARY VOLTAGE	SECONDARY VOLTAGE	CIRCUIT BREAKERS	MAX LOAD	CIRCUIT CAPACITY
ADNM Series Class 2 Transformer	ADNM-60-1-5-12-D	Outdoor or Indoor	100-277V AC 5% HZ	12V DC	1	60W	5A
	ADNM-80-1-5-12-D				1	80W	5A
	ADNM-150-2-5-12-D				2	2x60W	2x5A
	ADNM-240-3-5-12-D				3	3x60W	3x5A
	ADNM-320-4-5-12-D				4	4x60W	4x5A